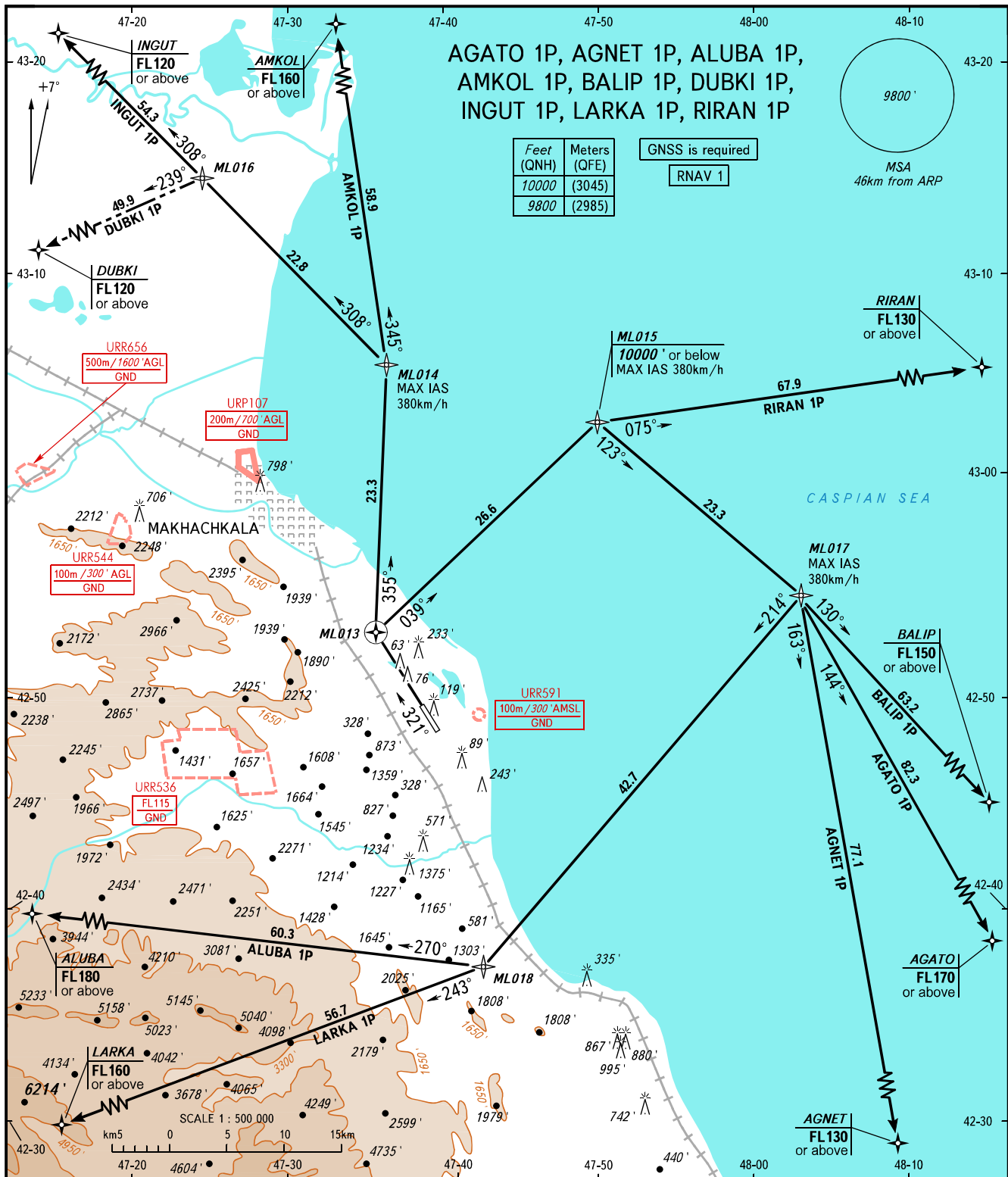


STANDARD DEPARTURE CHART  
INSTRUMENT (SID) - ICAO

TRANSITION  
ALTITUDE : 10000'

MAKHACHKALA, RUSSIA

UYTASH  
RNAV RWY 32



TOWER 121.300  
RADAR 121.300  
APPROACH 119.700

The minimum climb gradients are as follows (required due to the airspace limitation):

- 3.7% up to FL170 for AGATO 1P,
- 5.4% up to FL160 for AMKOL 1P,
- 3.8% up to FL150 for BALIP 1P,
- 3.6% up to FL120 for DUBKI 1P,
- 3.4% up to FL120 for INGUT 1P,
- 3.8% up to FL130 for RIRAN 1P.

BEARINGS AND TRACKS ARE MAGNETIC  
ALTITUDES AND ELEVATIONS IN FEET  
DISTANCES IN KILOMETRES