

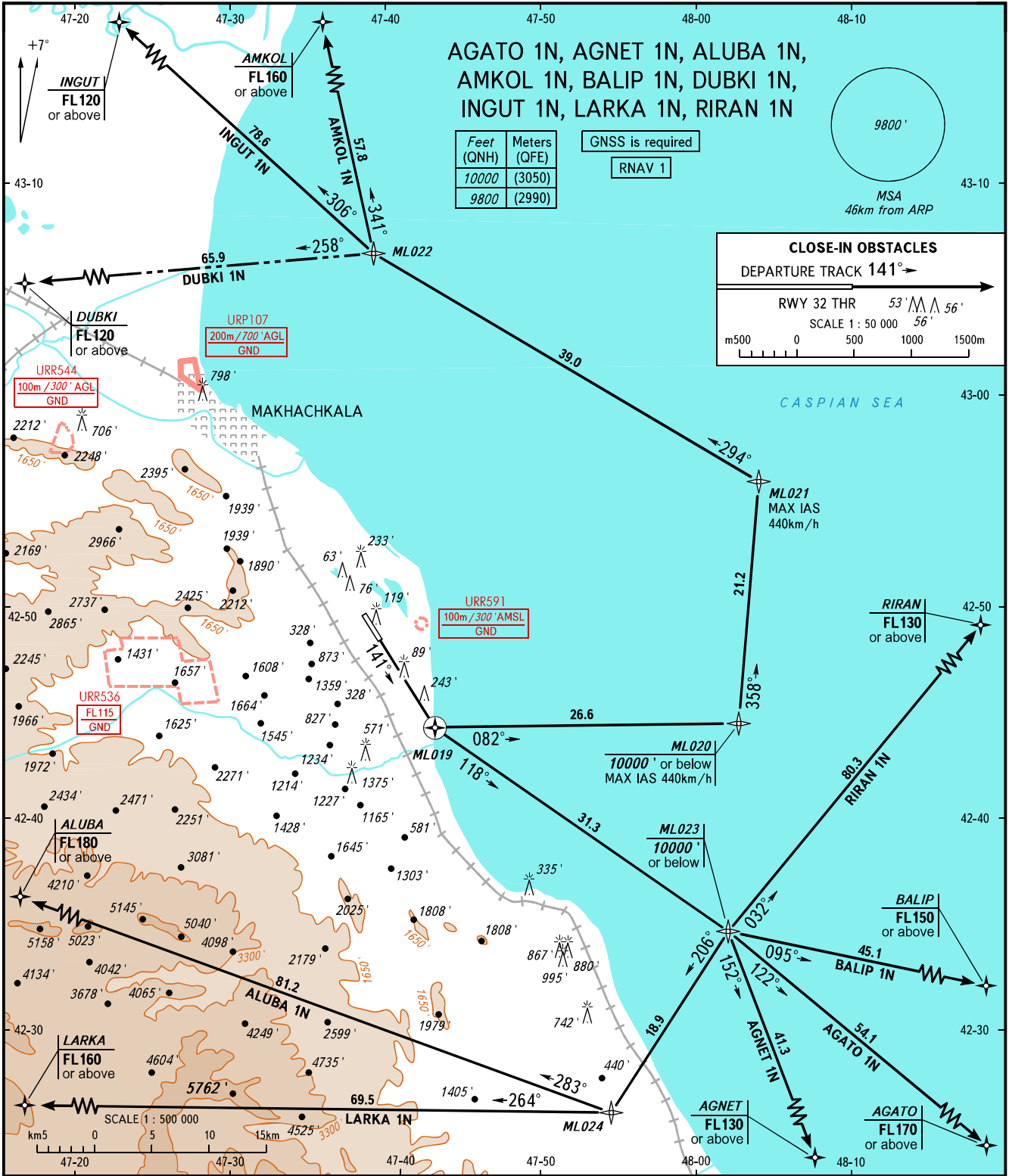
STANDARD DEPARTURE CHART  
INSTRUMENT (SID) - ICAO

TRANSITION  
ALTITUDE : 10000'

MAKHACHKALA, RUSSIA

UYTASH

RNAV RWY 14



**CLOSE-IN OBSTACLES**  
DEPARTURE TRACK 141° →

RWY 32 THR	53'	56'
------------	-----	-----

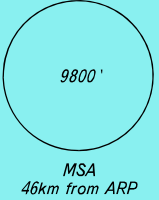
SCALE 1 : 50 000

m 500 0 500 1000 1500m

AGATO 1N, AGNET 1N, ALUBA 1N,  
AMKOL 1N, BALIP 1N, DUBKI 1N,  
INGUT 1N, LARKA 1N, RIRAN 1N

Feet (QNH)	Meters (QFE)
10000	(3050)
9800	(2990)

GNSS is required  
RNAV 1



TOWER 121.300  
RADAR 121.300  
APPROACH 119.700

The minimum climb gradients are as follows  
(required due to the airspace limitation):  
- 5.4% up to FL170 for AGATO 1N,  
- 4.8% up to FL130 for AGNET 1N,  
- 4.0% up to FL180 for ALUBA 1N,  
- 5.4% up to FL150 for BALIP 1N,  
- 3.9% up to FL160 for LARKA 1N.

BEARINGS AND TRACKS ARE MAGNETIC  
ALTITUDES AND ELEVATIONS IN FEET  
DISTANCES IN KILOMETRES

CHANGE: New chart