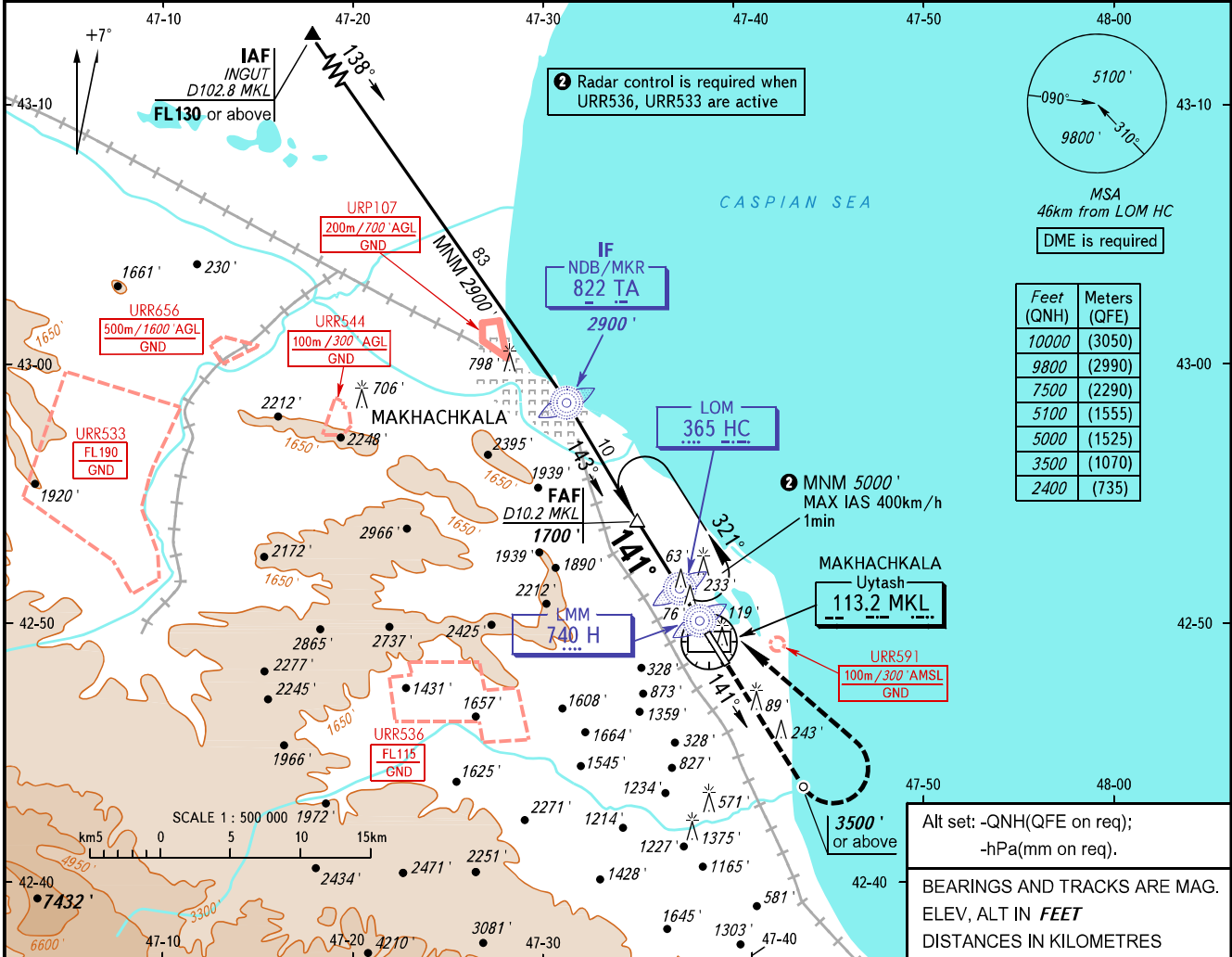


**INSTRUMENT
APPROACH
CHART - ICAO**

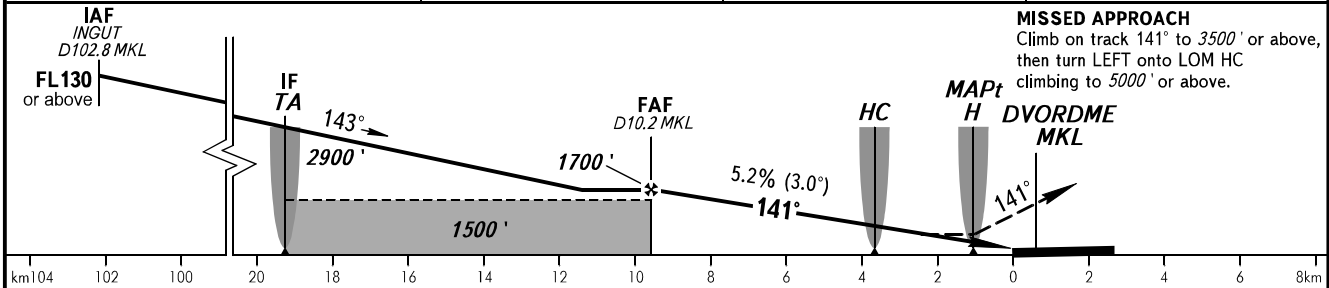
RADAR TOWER	121.300
	121.300

MAKHACHKALA, RUSSIA
UYTASH
NDB W RWY 14

TRANSITION LEVEL: 01	AD ELEV: 16'
TRANSITION ALTITUDE: 10000'	THR ELEV: 0'



DME MKL	8.0	6.0	4.0
ALTITUDE	1323'	979'	634'



OCA(H)	A	B	C	D
Straight-in	590' (590')	590' (590')	590' (590')	590' (590')
Approach				
Circling	790' (770')	830' (810')	1720' (1700')	1870' (1860')

1 TRANSITION LEVEL:
 - FL110 when QNH is 1013 hPa (760mm mercury column) or above;
 - FL120 when QNH is 977 hPa (733mm mercury column) or above, but less than 1013 hPa (760mm mercury column);
 - FL130 when QNH is less than 977 hPa (733mm mercury column).

WARNING:
 1. Visual manoeuvring west of the aerodrome is PROHIBITED.
 2. Turn before MAPt is PROHIBITED.
 3. MAPt at LMM H. Timing not authorized for defining MAPt.

GROUND SPEED	km/h	150	180	210	240	270	300	330	360	390	420	450
RATE OF DESCENT	m/s	2.2	2.6	3.0	3.5	3.9	4.3	4.8	5.2	5.6	6.1	6.5
	ft/min	427	512	597	682	768	853	938	1024	1109	1194	1280

CHANGE: New chart