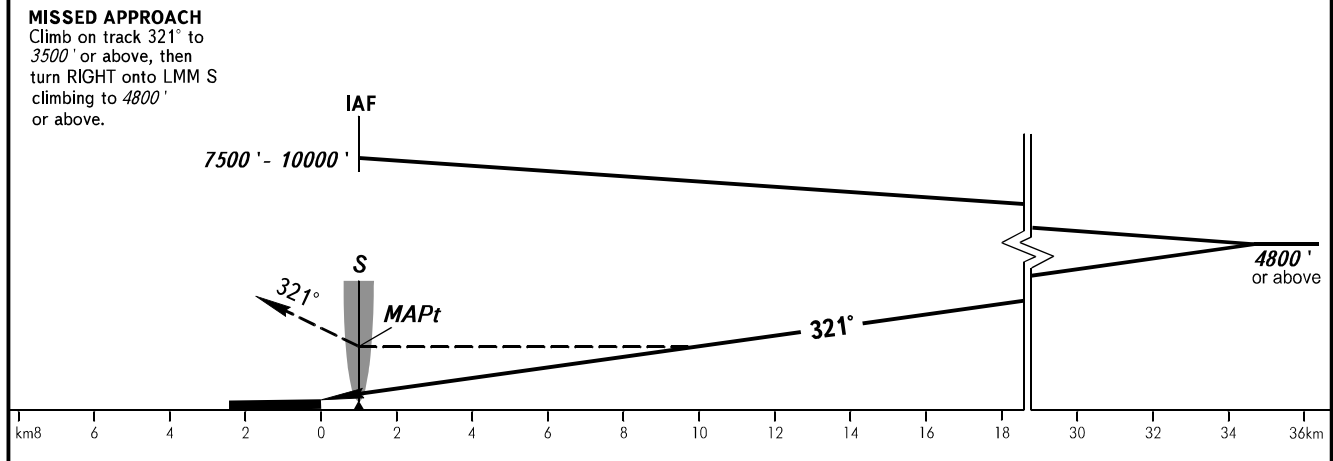
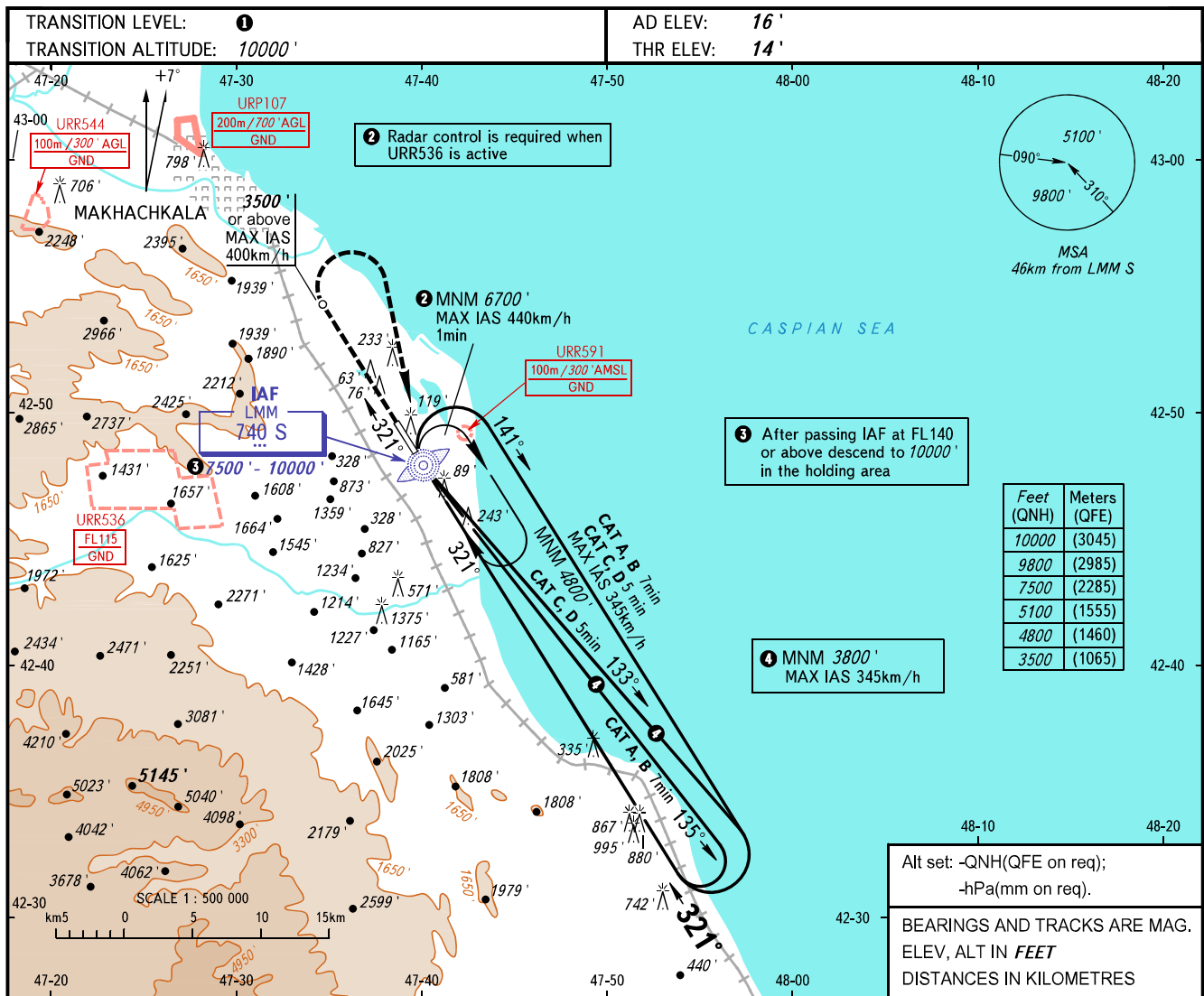


**INSTRUMENT
APPROACH
CHART - ICAO**

RADAR TOWER 121.300
121.300

MAKHACHKALA, RUSSIA
UYTASH
NDB X RWY 32



OCA(H)	A	B	C	D
Straight-in	1910' (1900')	1910' (1900')	1910' (1900')	1910' (1900')
Approach				
Circling	1910' (1900')	1910' (1900')	1910' (1900')	1910' (1900')

① TRANSITION LEVEL:
- FL110 when QNH is 1013 hPa (760mm mercury column) or above;
- FL120 when QNH is 977 hPa (733mm mercury column) or above, but less than 1013 hPa (760mm mercury column);
- FL130 when QNH is less than 977 hPa (733mm mercury column).

WARNING:
1. Visual manoeuvring west of the aerodrome is PROHIBITED.
2. Turn before MAPt is PROHIBITED.
3. MAPt at LMM S. Timing not authorized for defining MAPt.