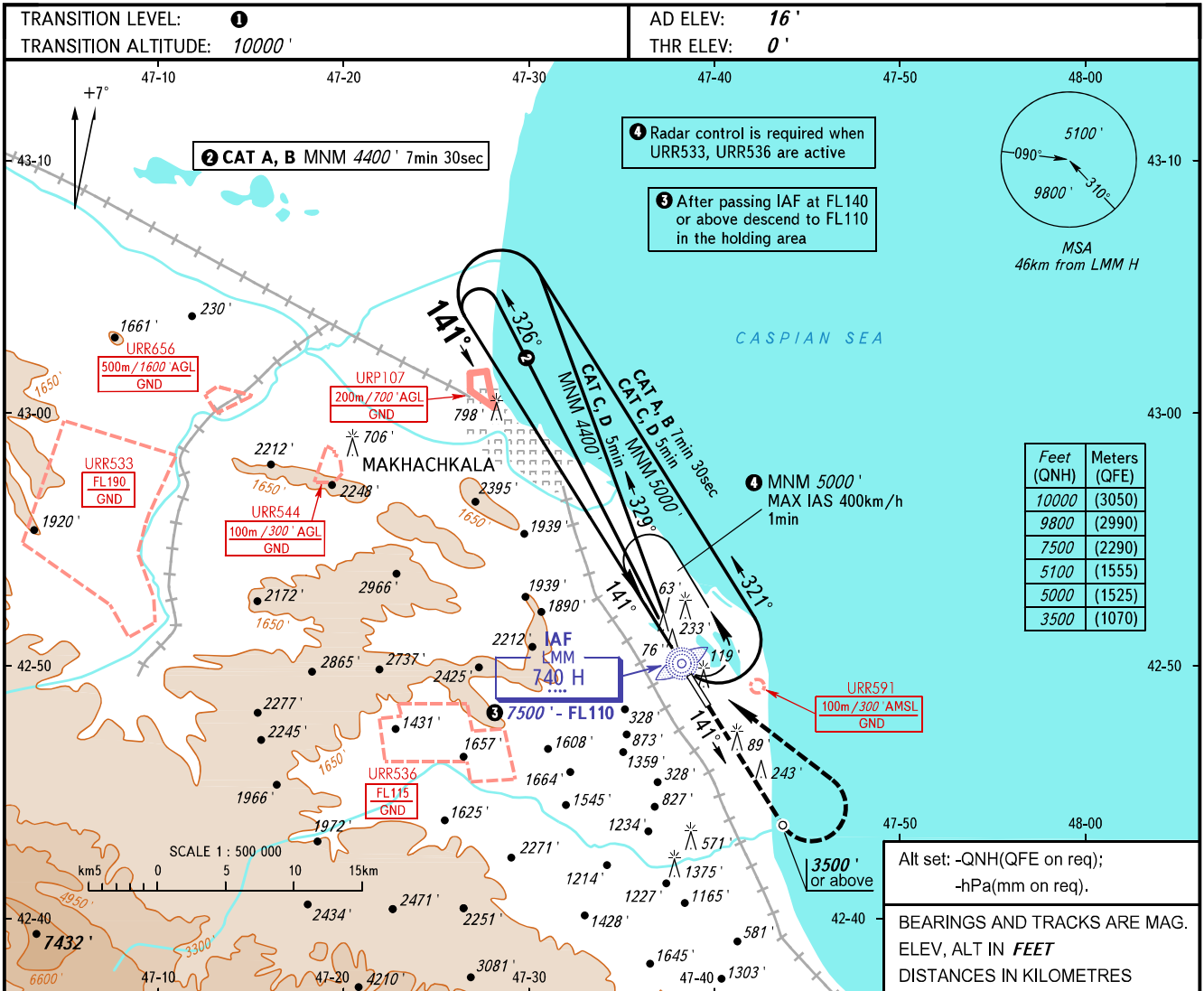


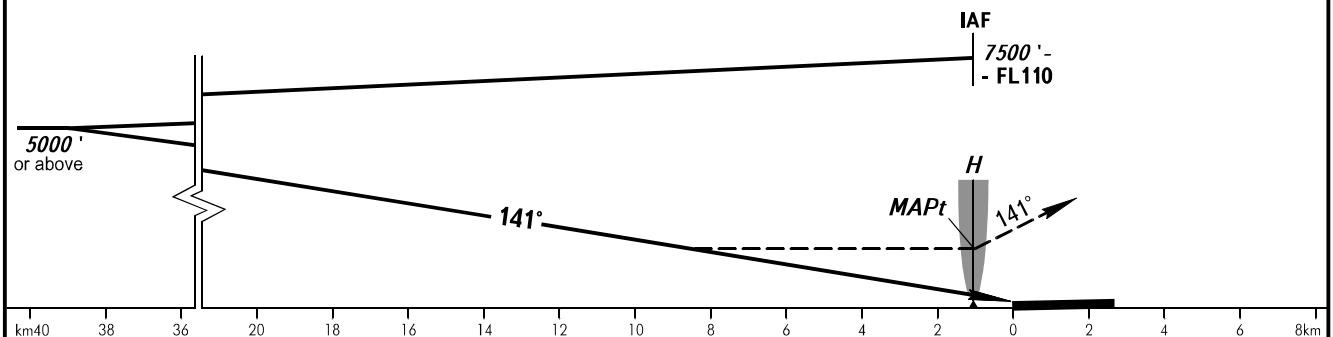
**INSTRUMENT
APPROACH
CHART - ICAO**

RADAR TOWER
121.300
121.300

MAKHACHKALA, RUSSIA
UYTASH
NDB X RWY 14



MISSED APPROACH
Climb on track 141° to 3500' or above, then turn LEFT onto LMM H climbing to 5000' or above.



OCA(H)		A	B	C	D
Straight-in Approach		1870' (1870')	1870' (1870')	1870' (1870')	1870' (1870')
Circling		1870' (1870')	1870' (1870')	1870' (1870')	1870' (1870')

① TRANSITION LEVEL:
- FL110 when QNH is 1013 hPa (760mm mercury column) or above;
- FL120 when QNH is 977 hPa (733mm mercury column) or above, but less than 1013 hPa (760mm mercury column);
- FL130 when QNH is less than 977 hPa (733mm mercury column).

WARNING:
1. Visual manoeuvring west of the aerodrome is PROHIBITED.
2. Turn before MAPt is PROHIBITED.
3. MAPt at LMM H. Timing not authorized for defining MAPt.

CHANGE: NIL