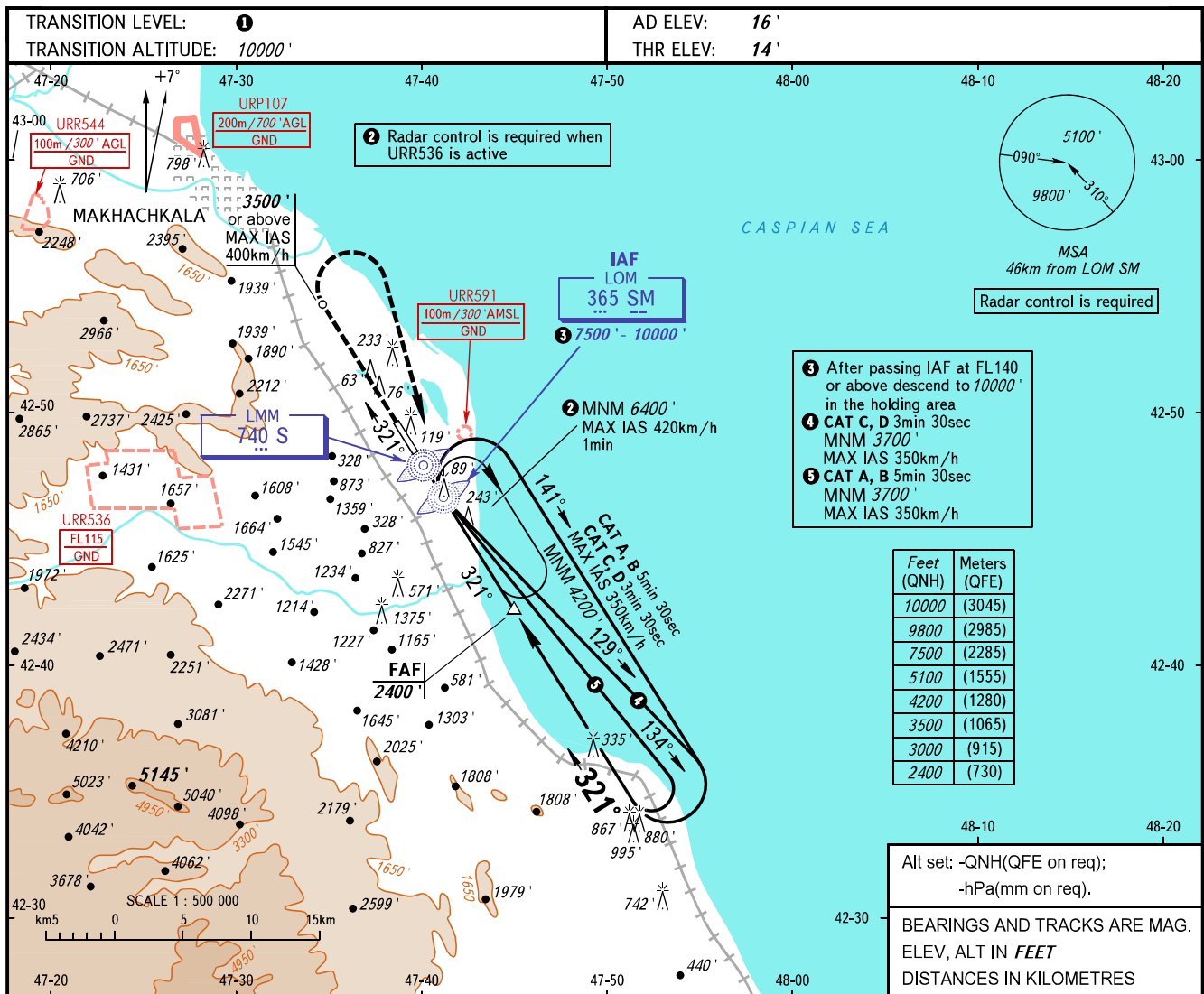


**INSTRUMENT
APPROACH
CHART - ICAO**

RADAR TOWER 121.300
121.300

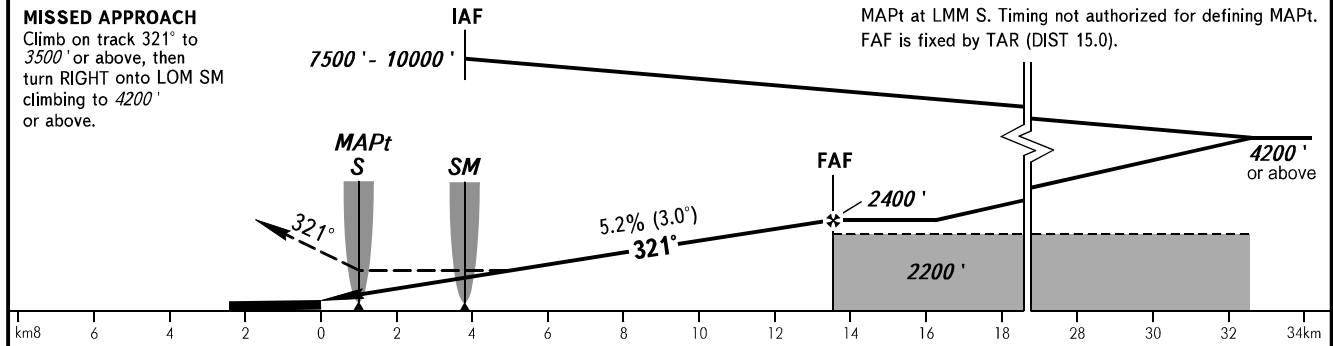
MAKHACHKALA, RUSSIA
UYTASH
NDB Y RWY 32



- 1 After passing IAF at FL 140 or above descend to 10000' in the holding area
- 2 CAT C, D 3min 30sec
MAX IAS 350km/h
- 3 CAT A, B 5min 30sec
MAX IAS 350km/h

Feet (QNH)	Meters (QFE)
10000	(3045)
9800	(2985)
7500	(2285)
5100	(1555)
4200	(1280)
3500	(1065)
3000	(915)
2400	(730)

Alt set: -QNH(QFE on req);
-hPa(mm on req).
BEARINGS AND TRACKS ARE MAG.
ELEV, ALT IN FEET
DISTANCES IN KILOMETRES



OCA(H)		A	B	C	D
Straight-in Approach	2.5%*	1100' (1090')	1100' (1090')	1100' (1090')	1100' (1090')
	3.4%*	740' (730')	740' (730')	740' (730')	740' (730')
Circling		1100' (1090')	1100' (1090')	1720' (1700')	1870' (1860')

* MNM climb gradient

1 TRANSITION LEVEL:
- FL110 when QNH is 1013 hPa (760mm mercury column) or above;
- FL120 when QNH is 977 hPa (733mm mercury column) or above,
but less than 1013 hPa (760mm mercury column);
- FL130 when QNH is less than 977 hPa (733mm mercury column).
WARNING:
1. Visual manoeuvring west of the aerodrome is PROHIBITED.
2. Turn before MAPt is PROHIBITED.
3. DME IGL reads zero at RWY 32 THR.

GROUND SPEED	km/h	150	180	210	240	270	300	330	360	390	420	450
RATE OF DESCENT	m/s	2.2	2.6	3.0	3.5	3.9	4.3	4.8	5.2	5.6	6.1	6.5
	ft/min	427	512	597	682	768	853	938	1024	1109	1194	1280