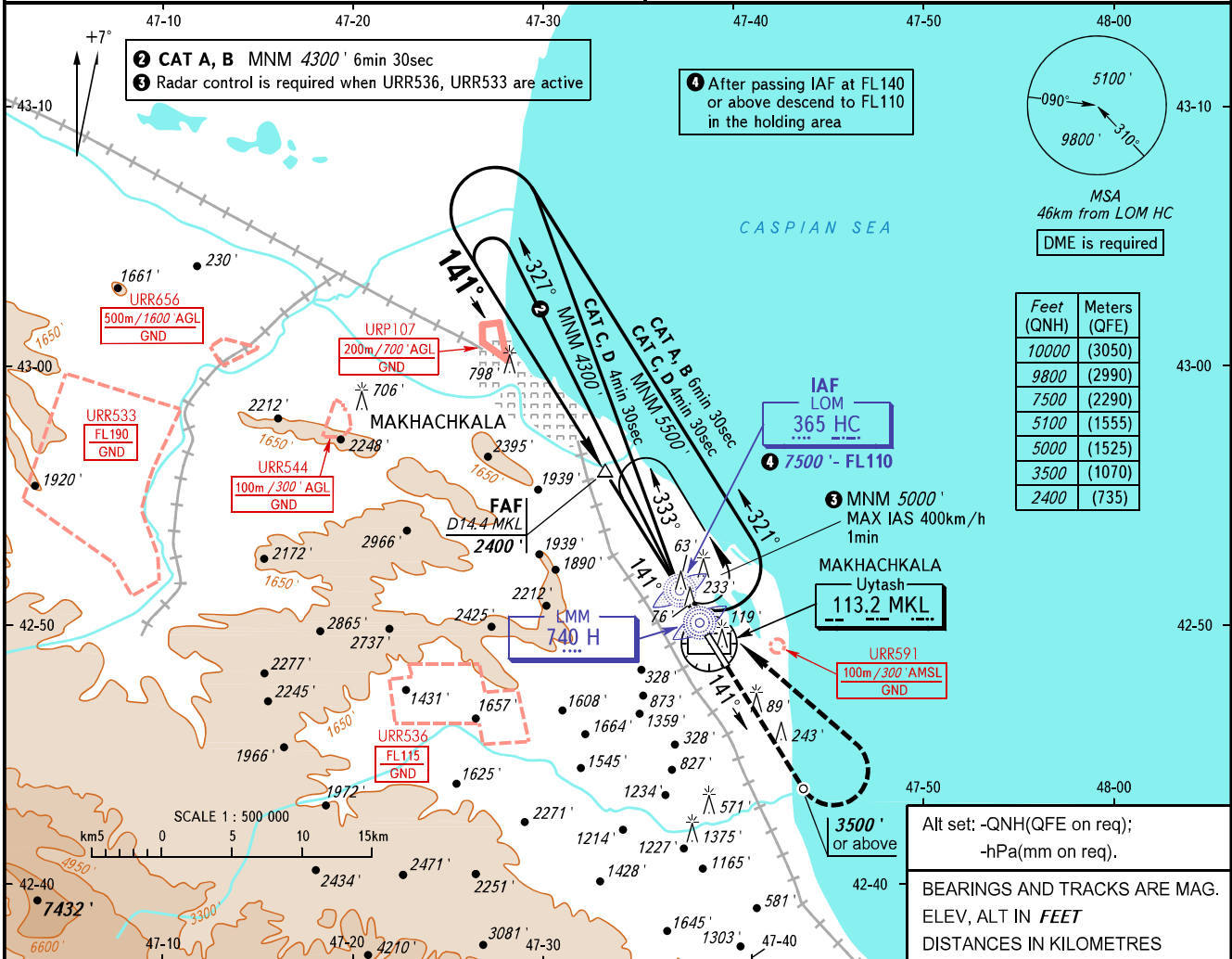


INSTRUMENT  
APPROACH  
CHART - ICAO

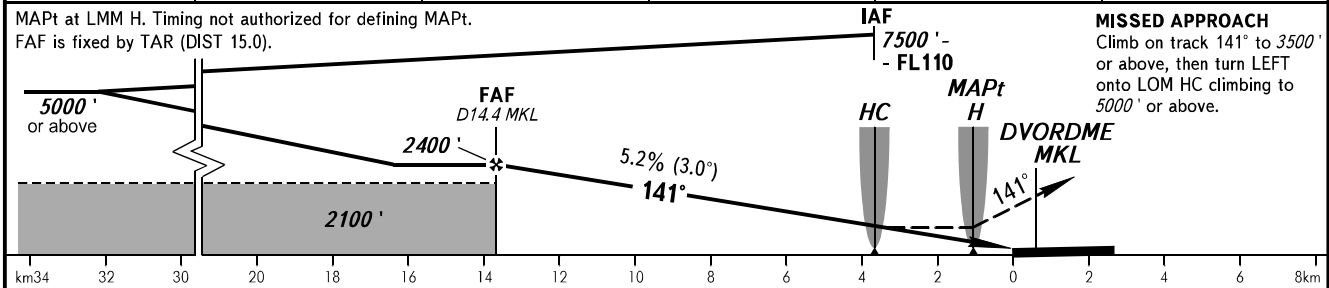
RADAR TOWER	121.300
	121.300

MAKHACHKALA, RUSSIA  
UYTASH  
NDB Y RWY 14

TRANSITION LEVEL: **1**  
 TRANSITION ALTITUDE: **10000'**  
 AD ELEV: **16'**  
 THR ELEV: **0'**



DME MKL	14.0	12.0	10.0	8.0	6.0
ALTITUDE	2354'	2011'	1667'	1323'	979'



OCA(H)	A	B	C	D
Straight-in Approach	590' (590')	590' (590')	590' (590')	590' (590')
Circling	790' (770')	830' (810')	1720' (1700')	1870' (1860')

**1** TRANSITION LEVEL:  
 - FL110 when QNH is 1013 hPa (760mm mercury column) or above;  
 - FL120 when QNH is 977 hPa (733mm mercury column) or above, but less than 1013 hPa (760mm mercury column);  
 - FL130 when QNH is less than 977 hPa (733mm mercury column).

**WARNING:**  
 1. Visual manoeuvring west of the aerodrome is PROHIBITED.  
 2. Turn before MAPt is PROHIBITED.

GROUND SPEED	km/h	150	180	210	240	270	300	330	360	390	420	450
	RATE OF DESCENT	m/s	2.2	2.6	3.0	3.5	3.9	4.3	4.8	5.2	5.6	6.1
	ft/min	427	512	597	682	768	853	938	1024	1109	1194	1280