

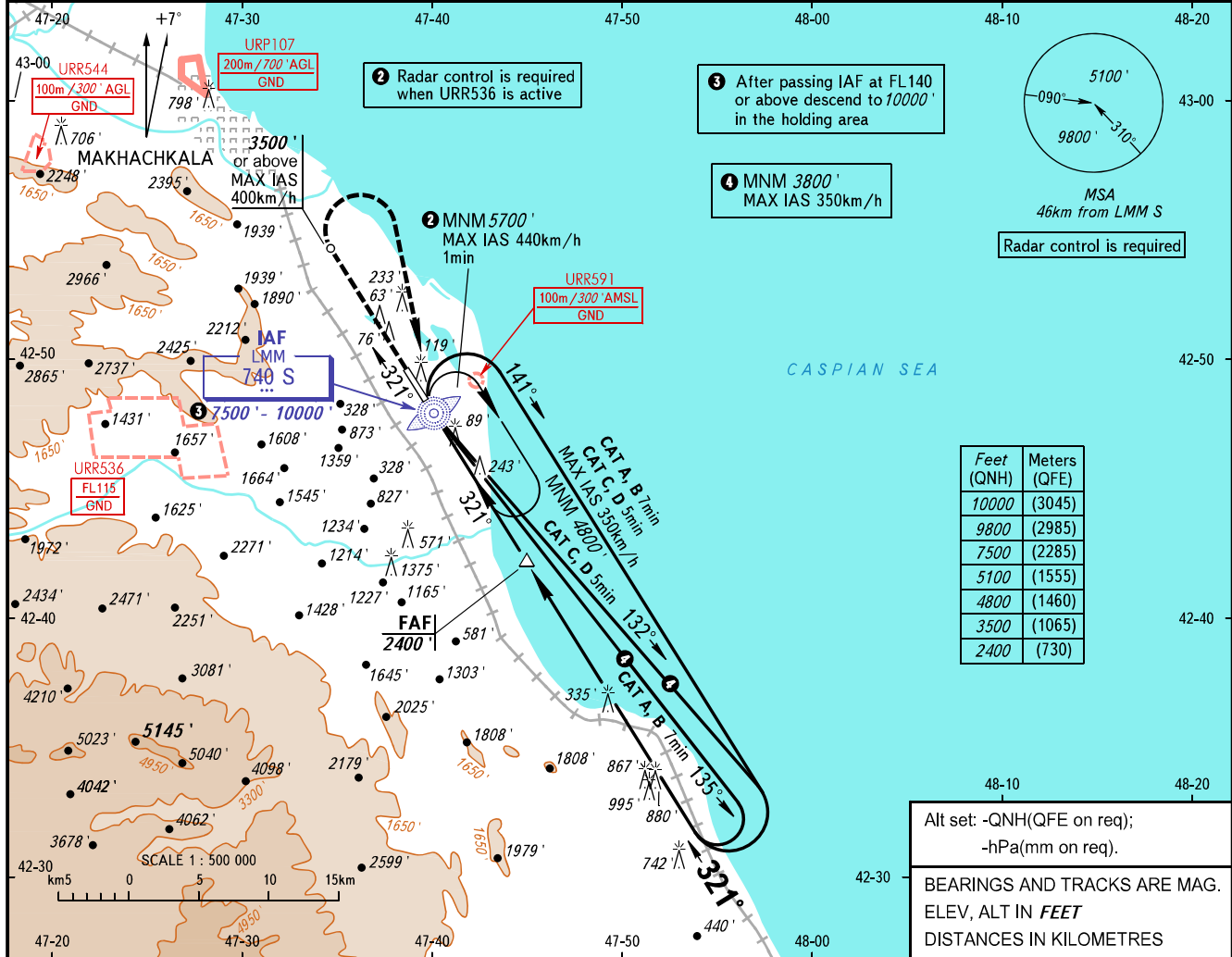
**INSTRUMENT  
APPROACH  
CHART - ICAO**

**MAKHACHKALA, RUSSIA**  
UYTASH  
NDB Z RWY 32

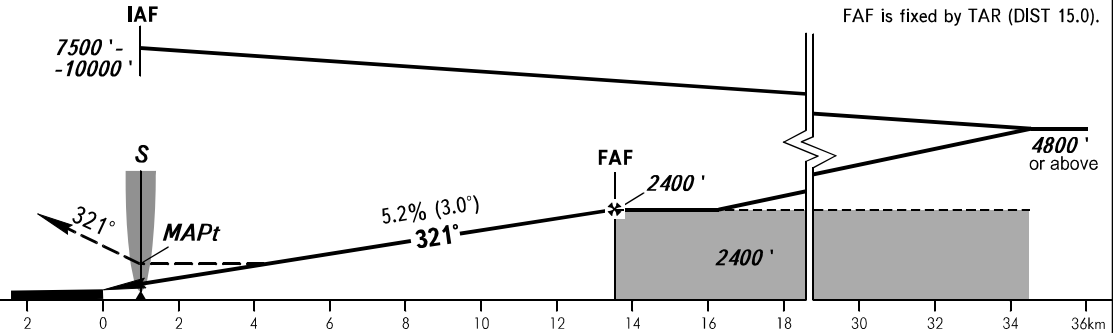
RADAR TOWER 121.300  
121.300

TRANSITION LEVEL: ①  
TRANSITION ALTITUDE: 10000'

AD ELEV: 16'  
THR ELEV: 14'



**MISSED APPROACH**  
Climb on track 321° to 3500' or above, then turn RIGHT onto LMM S climbing to 4800' or above.



OCA(H)		A	B	C	D
Straight-in	2.5%*	1020' (1010')	1020' (1010')	1020' (1010')	1020' (1010')
	3.0%*	740' (730')	740' (730')	740' (730')	740' (730')
Circling		1020' (1010')	1020' (1010')	1720' (1700')	1870' (1860')

\* MNM climb gradient

① TRANSITION LEVEL:  
- FL110 when QNH is 1013 hPa (760mm mercury column) or above;  
- FL120 when QNH is 977 hPa (733mm mercury column) or above, but less than 1013 hPa (760mm mercury column);  
- FL130 when QNH is less than 977 hPa (733mm mercury column).

**WARNING:**  
1. Visual manoeuvring west of the aerodrome is PROHIBITED.  
2. Turn before MAPt is PROHIBITED.  
3. MAPt at LMM S. Timing not authorized for defining MAPt.

GROUND SPEED	km/h	150	180	210	240	270	300	330	360	390	420	450
RATE OF DESCENT	m/s	2.2	2.6	3.0	3.5	3.9	4.3	4.8	5.2	5.6	6.1	6.5
	ft/min	427	512	597	682	768	853	938	1024	1109	1194	1280