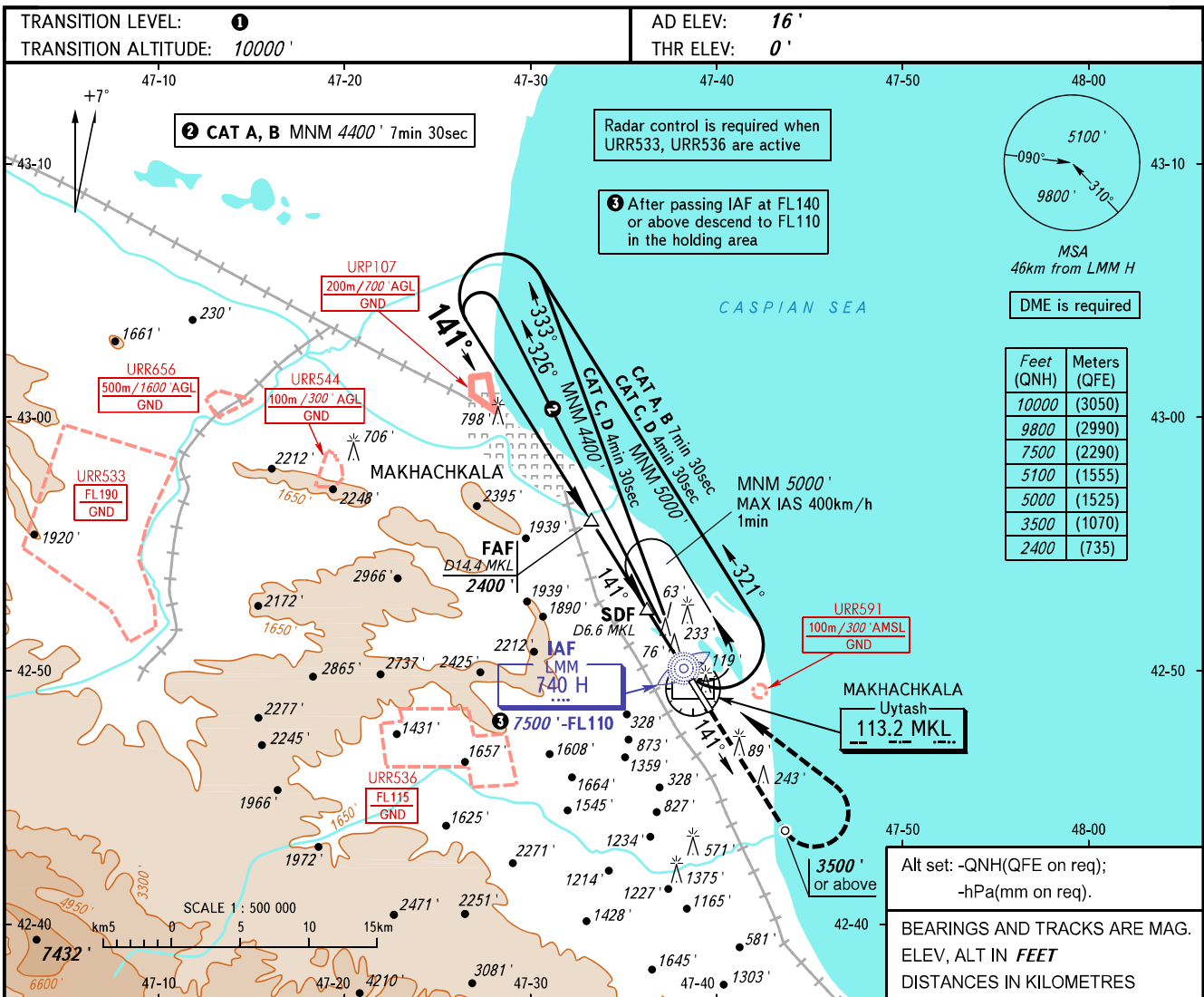


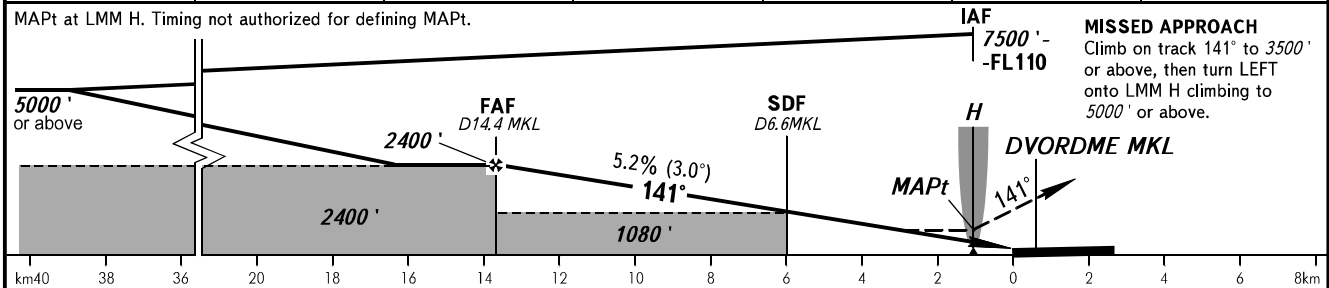
**INSTRUMENT
APPROACH
CHART - ICAO**

RADAR TOWER
121.300
121.300

MAKHACHKALA, RUSSIA
UYTASH
NDB Z RWY 14



DME MKL	14.0	12.0	10.0	8.0	6.0	4.0
ALTITUDE	2354'	2011'	1667'	1323'	979'	634'



OCA(H)		A	B	C	D	1 TRANSITION LEVEL: - FL110 when QNH is 1013 hPa (760mm mercury column) or above; - FL120 when QNH is 977 hPa (733mm mercury column) or above but less than 1013 hPa (760mm mercury column); - FL130 when QNH is less than 977 hPa (733mm mercury column). WARNING: 1. Visual manoeuvring west of the aerodrome is PROHIBITED. 2. Turn before MAPt is PROHIBITED.
Straight-in Approach	WO SDF	1080' (1080')	1080' (1080')	1080' (1080')	1080' (1080')	
	With SDF	570' (570')	570' (570')	570' (570')	570' (570')	
Circling		1080' (1080')	1080' (1080')	1720' (1700')	1870' (1860')	

GROUND SPEED	km/h	150	180	210	240	270	300	330	360	390	420	450
RATE OF DESCENT	m/s	2.2	2.6	3.0	3.5	3.9	4.3	4.8	5.2	5.6	6.1	6.5
	ft/min	427	512	597	682	768	853	938	1024	1109	1194	1280

CHANGE: NIL