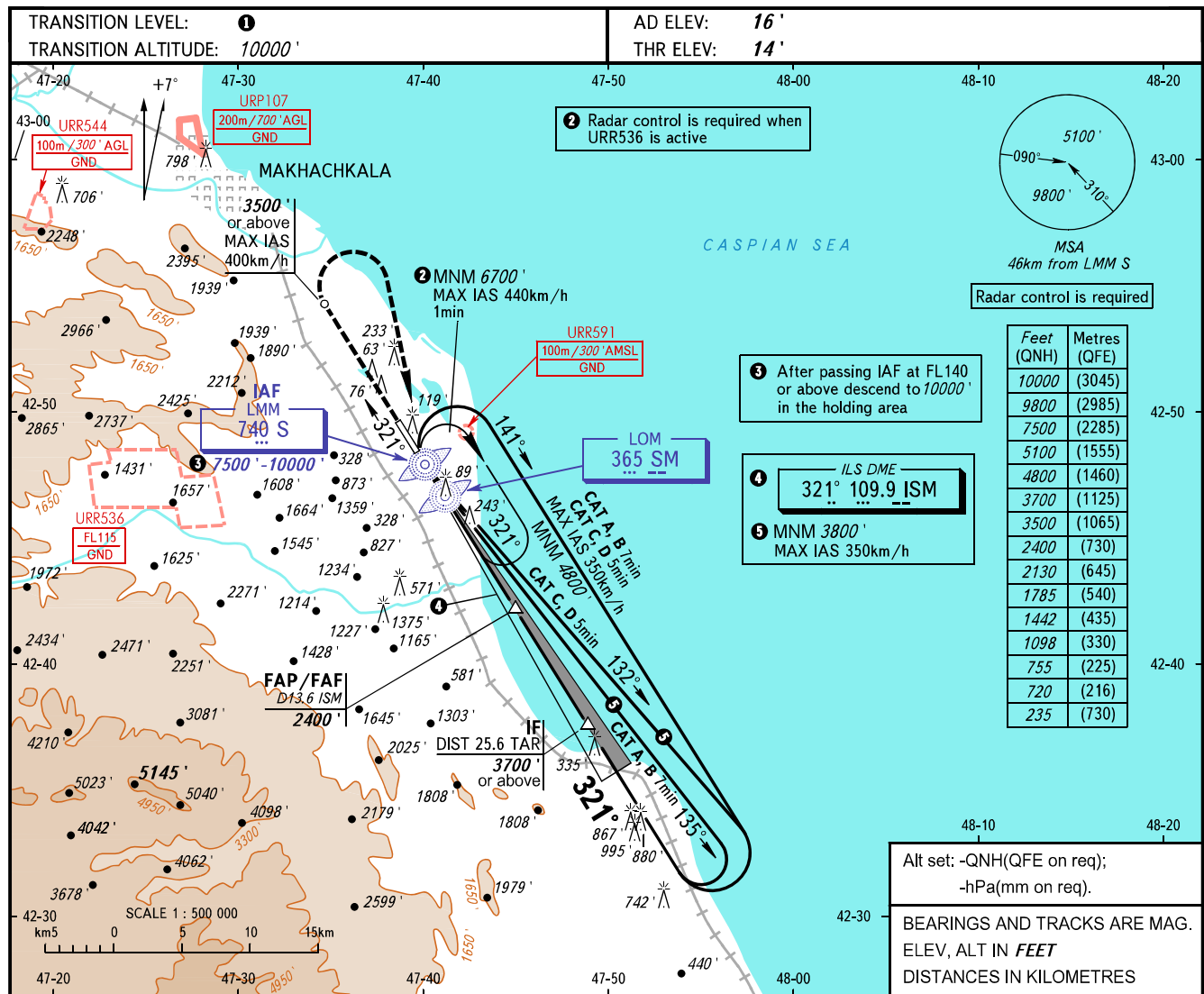


INSTRUMENT  
APPROACH  
CHART - ICAO

RADAR TOWER 121.300  
121.300

MAKHACHKALA, RUSSIA  
UYTASH  
ILS X CAT I, LOC X RWY 32



Radar control is required

Feet (QNH)	Metres (QFE)
10000	(3045)
9800	(2985)
7500	(2285)
5100	(1555)
4800	(1460)
3700	(1125)
3500	(1065)
2400	(730)
2130	(645)
1785	(540)
1442	(435)
1098	(330)
755	(225)
720	(216)
235	(730)

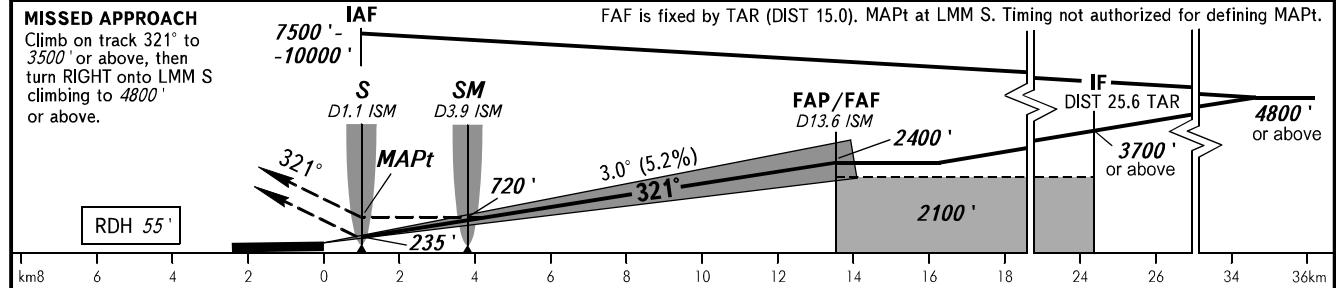
3 After passing IAF at FL140 or above descend to 10000' in the holding area

4 ILS DME 321° 109.9 ISM

5 MNM 3800' MAX IAS 350km/h

Alt set: -QNH(QFE on req);  
-hPa(mm on req).  
BEARINGS AND TRACKS ARE MAG. ELEV, ALT IN FEET  
DISTANCES IN KILOMETRES

DME ISM	4.0	6.0	8.0	10.0	12.0
ALTITUDE	755'	1098'	1442'	1785'	2130'



OCA(H)		A	B	C	D
Straight-in Approach	CAT I 2.5%*	466' (452')	476' (462')	485' (472')	495' (482')
	CAT I 3.5%*	192' (178')	201' (188')	211' (198')	221' (208')
	LOC	740' (730')	740' (730')	740' (730')	740' (730')
Circling		790' (770')	830' (810')	1720' (1700')	1870' (1860')

1 TRANSITION LEVEL:  
- FL110 when QNH is 1013 hPa (760mm mercury column) or above;  
- FL120 when QNH is 977 hPa (733mm mercury column) or above, but less than 1013 hPa (760mm mercury column);  
- FL130 when QNH is less than 977 hPa (733mm mercury column).  
**WARNING:**  
1. Visual manoeuvring west of the aerodrome is PROHIBITED.  
2. Turn before MAPt is PROHIBITED.  
3. DME ISM reads zero at RWY 32 THR.

GROUND SPEED	km/h	150	180	210	240	270	300	330	360	390	420	450
		RATE OF DESCENT	m/s	2.2	2.6	3.0	3.5	3.9	4.3	4.8	5.2	5.6
	ft/min	427	512	597	682	768	853	938	1024	1109	1194	1280