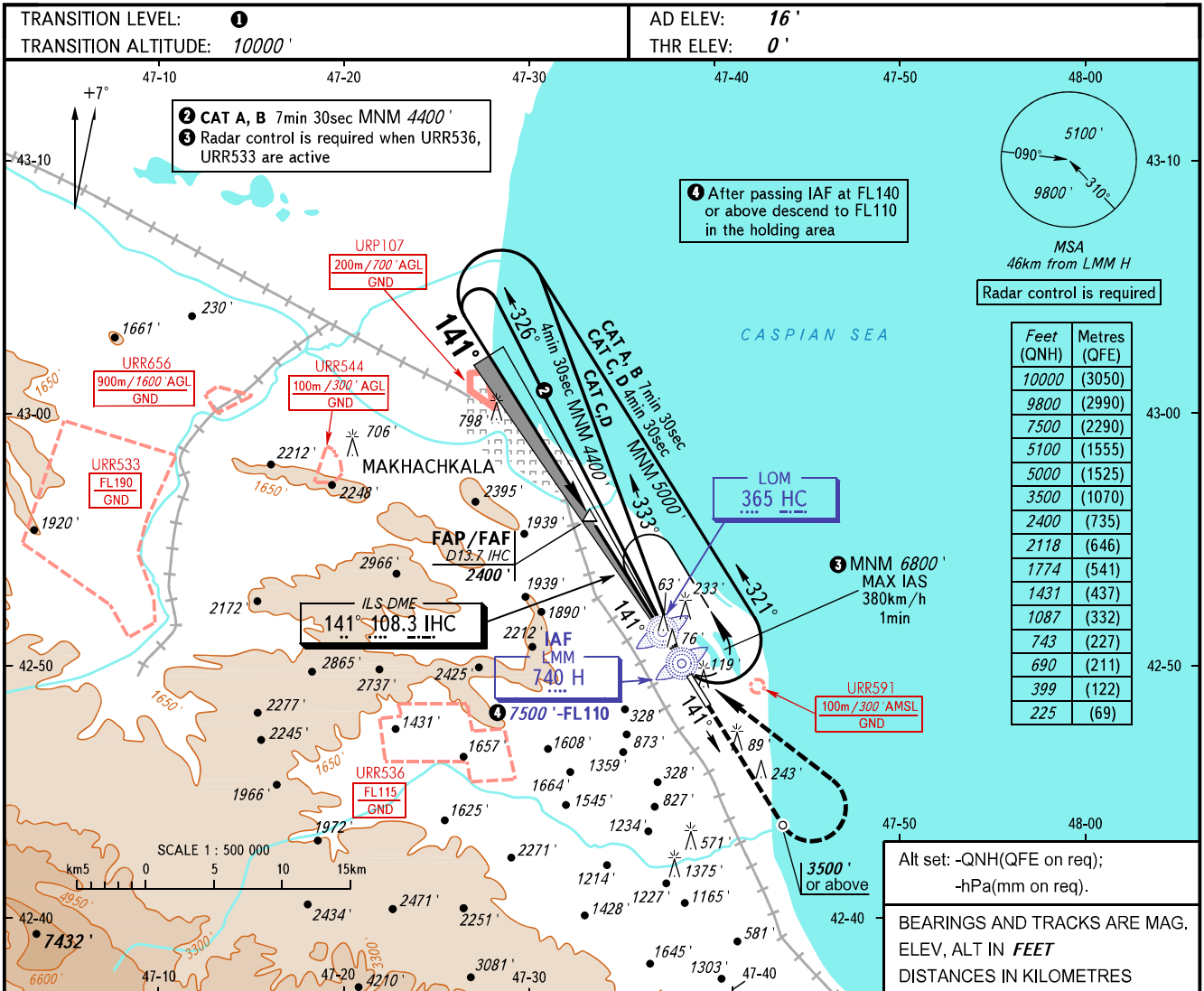


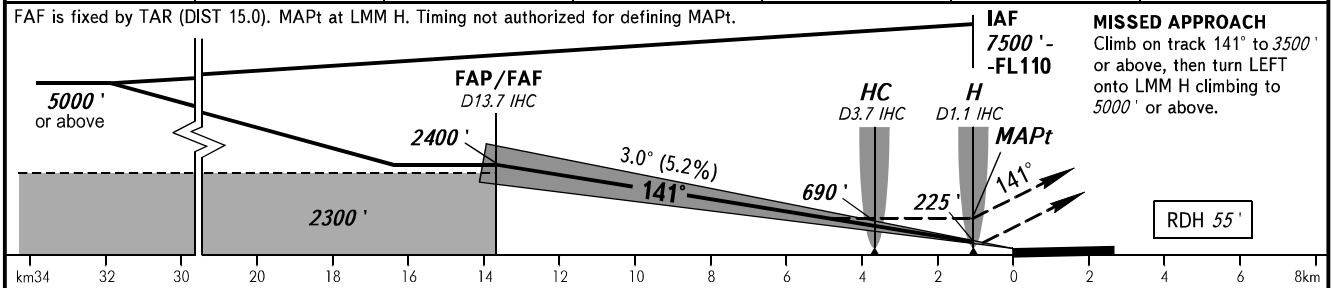
**INSTRUMENT
APPROACH
CHART - ICAO**

| | |
|-------------|---------|
| RADAR TOWER | 121.300 |
| | 121.300 |

MAKHACHKALA, RUSSIA
UYTASH
ILS X CAT I, LOC X RWY 14



| | | | | | | |
|----------|-------|-------|-------|-------|------|------|
| DME IHC | 12.0 | 10.0 | 8.0 | 6.0 | 4.0 | 2.0 |
| ALTITUDE | 2118' | 1774' | 1431' | 1087' | 743' | 399' |



| OCA(H) | A | B | C | D | |
|----------------------|--------------|-------------|---------------|---------------|-------------|
| Straight-in Approach | CAT I | 182' (182') | 192' (191') | 201' (201') | 211' (211') |
| | LOC | 740' (740') | 740' (740') | 740' (740') | 740' (740') |
| Circling | 790' (770') | 830' (810') | 1720' (1700') | 1870' (1860') | |

TRANSITION LEVEL:
 - FL110 when QNH is 1013 hPa (760mm mercury column) or above;
 - FL120 when QNH is 977 hPa (733mm mercury column) or above, but less than 1013 hPa (760mm mercury column);
 - FL130 when QNH is less than 977 hPa (733mm mercury column).

WARNING:
 1. Visual manoeuvring west of the aerodrome is PROHIBITED.
 2. Turn before MAPt is PROHIBITED.
 3. DME IHC reads zero at RWY 14 THR.

| GROUND SPEED | km/h | 150 | 180 | 210 | 240 | 270 | 300 | 330 | 360 | 390 | 420 | 450 |
|-----------------|--------|-----|-----|-----|-----|-----|-----|-----|------|------|------|------|
| | m/s | 2.2 | 2.6 | 3.0 | 3.5 | 3.9 | 4.3 | 4.8 | 5.2 | 5.6 | 6.1 | 6.5 |
| RATE OF DESCENT | ft/min | 427 | 512 | 597 | 682 | 768 | 853 | 938 | 1024 | 1109 | 1194 | 1280 |