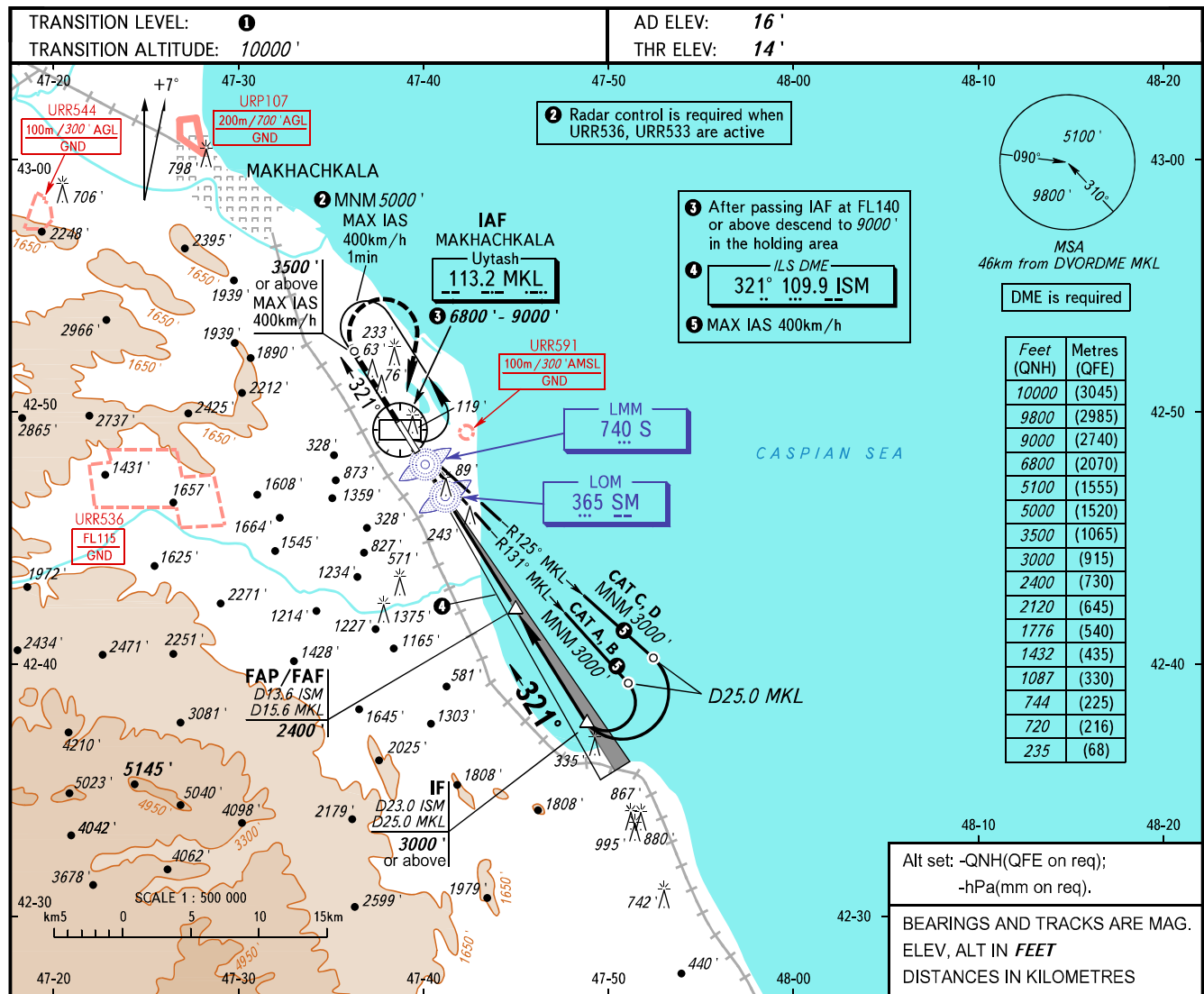


INSTRUMENT
APPROACH
CHART - ICAO

RADAR
TOWER 121.300
121.300

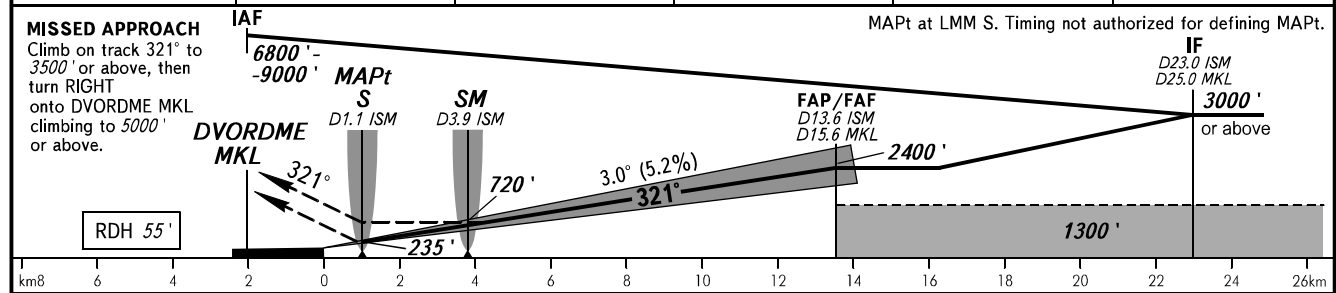
MAKHACHKALA, RUSSIA
UYTASH
ILS Y CAT I, LOC Y RWY 32



Feet (QNH)	Metres (QFE)
1000	(3045)
9800	(2985)
9000	(2740)
6800	(2070)
5100	(1555)
5000	(1520)
3500	(1065)
3000	(915)
2400	(730)
2120	(645)
1776	(540)
1432	(435)
1087	(330)
744	(225)
720	(216)
235	(68)

Alt set: -QNH(QFE on req);
-hPa(mm on req).
BEARINGS AND TRACKS ARE MAG.
ELEV, ALT IN FEET
DISTANCES IN KILOMETRES

DME MKL	6.0	8.0	10.0	12.0	14.0
ALTITUDE	744'	1087'	1432'	1776'	2120'



		OCA(H)	A	B	C	D
Straight-in Approach	CAT I	2.5%*	466' (452')	476' (462')	485' (472')	495' (482')
	CAT I	3.5%*	192' (178')	201' (188')	211' (198')	221' (208')
	LOC		740' (730')	740' (730')	740' (730')	740' (730')
Circling			790' (770')	830' (810')	1720' (1700')	1870' (1860')

1 TRANSITION LEVEL:
- FL110 when QNH is 1013 hPa (760mm mercury column) or above;
- FL120 when QNH is 977 hPa (733mm mercury column) or above,
but less than 1013 hPa (760mm mercury column);
- FL130 when QNH is less than 977 hPa
(733mm mercury column).
WARNING:
1. Visual manoeuvring west of the aerodrome is PROHIBITED.
2. Turn before MAPt is PROHIBITED.
3. DME ISM reads zero at RWY 32 THR.

GROUND SPEED	km/h	150	180	210	240	270	300	330	360	390	420	450
	RATE OF DESCENT	m/s	2.2	2.6	3.0	3.5	3.9	4.3	4.8	5.2	5.6	6.1
	ft/min	427	512	597	682	768	853	938	1024	1109	1194	1280

CHANGE: RDH