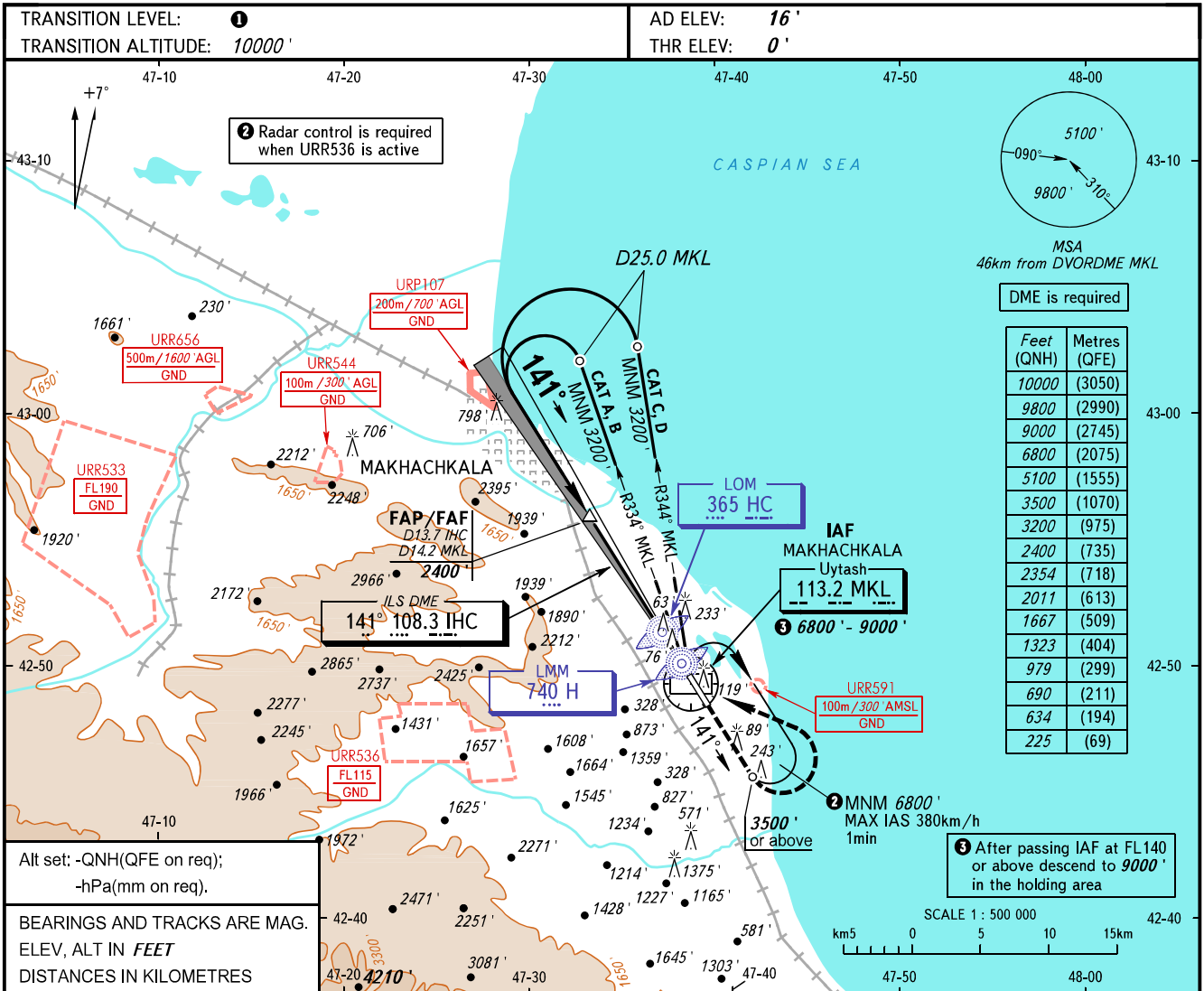


**INSTRUMENT
APPROACH
CHART - ICAO**

RADAR TOWER 121.300
121.300

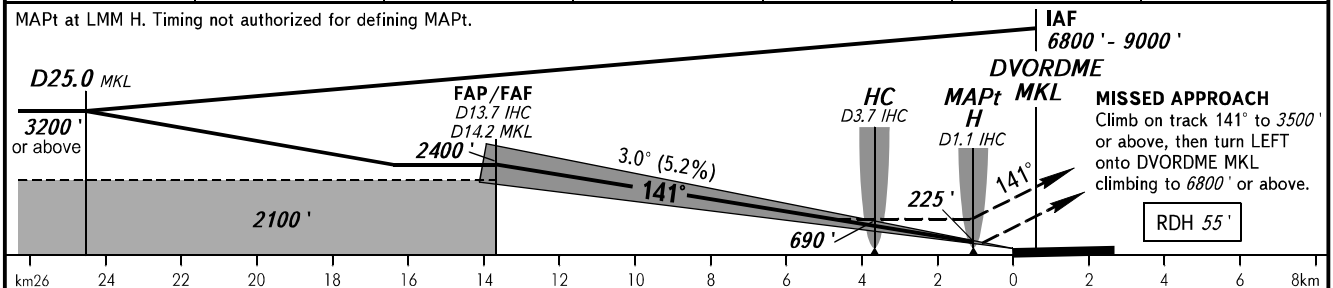
MAKHACHKALA, RUSSIA
UYTASH
ILS Y CAT I, LOC Y RWY 14



DME is required

Feet (QNH)	Metres (QFE)
10000	(3050)
9800	(2990)
9000	(2745)
6800	(2075)
5100	(1555)
3500	(1070)
3200	(975)
2400	(735)
2354	(718)
2011	(613)
1667	(509)
1323	(404)
979	(299)
690	(211)
634	(194)
225	(69)

DME MKL	14.0	12.0	10.0	8.0	6.0	4.0
ALTITUDE	2354'	2011'	1667'	1323'	979'	634'



OCA(H)		A	B	C	D
Straight-in Approach	CAT I	182' (182')	192' (191')	201' (201')	211' (211')
	LOC	740' (740')	740' (740')	740' (740')	740' (740')
Circling		790' (770')	830' (810')	1720' (1700')	1870' (1860')

1 TRANSITION LEVEL:
 - FL110 when QNH is 1013 hPa (760mm mercury column) or above;
 - FL120 when QNH is 977 hPa (733mm mercury column) or above, but less than 1013 hPa (760mm mercury column);
 - FL130 when QNH is less than 977 hPa (733mm mercury column).

WARNING:
 1. Visual manoeuvring west of the aerodrome is PROHIBITED.
 2. Turn before MAPt is PROHIBITED.
 3. DME IHC reads zero at RWY 14 THR.

GROUND SPEED	km/h	150	180	210	240	270	300	330	360	390	420	450
	RATE OF DESCENT	m/s	2.2	2.6	3.0	3.5	3.9	4.3	4.8	5.2	5.6	6.1
	ft/min	427	512	597	682	768	853	938	1024	1109	1194	1280