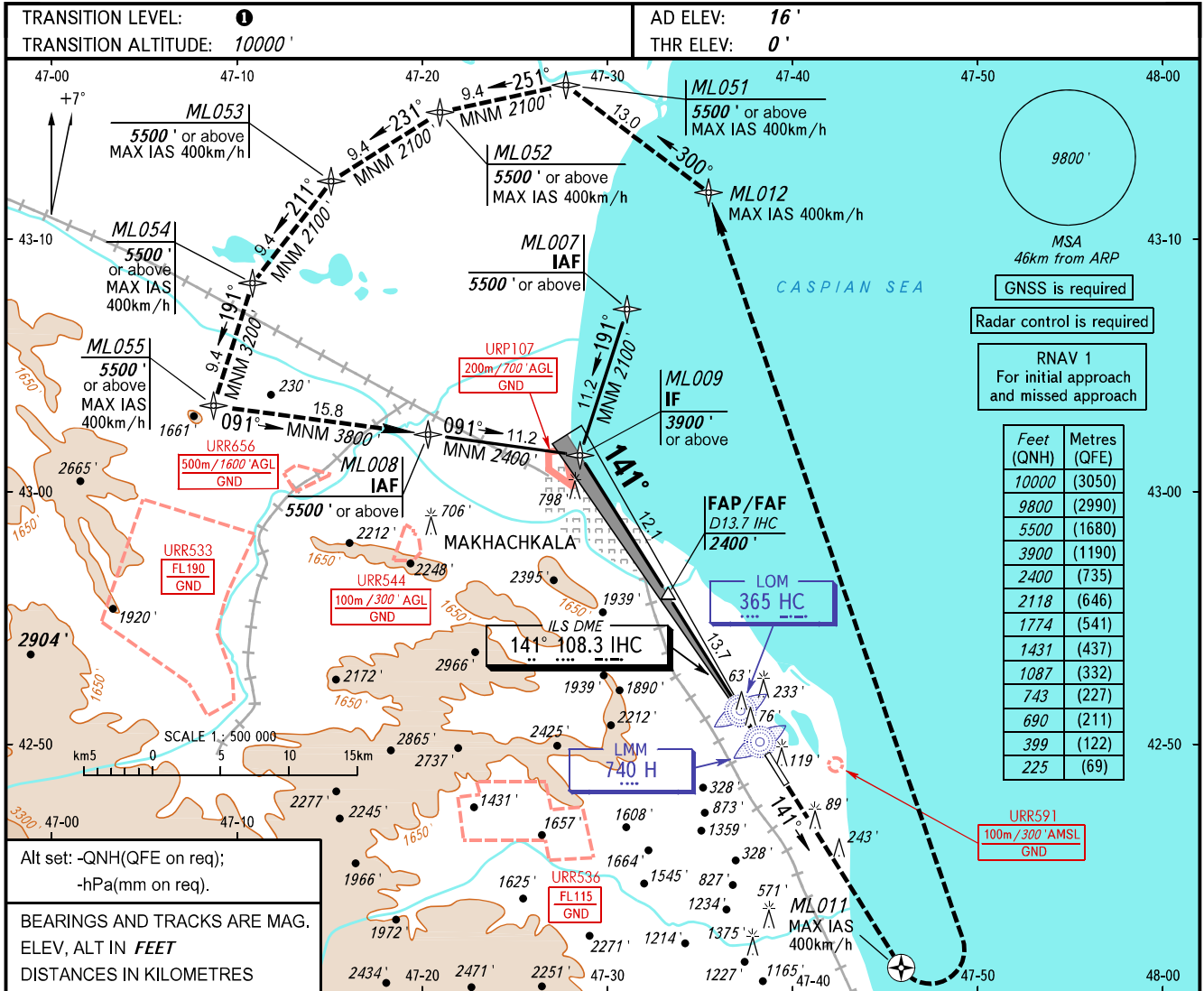


**INSTRUMENT
APPROACH
CHART - ICAO**

RADAR TOWER
121.300
121.300

MAKHACHKALA, RUSSIA
UYTASH
ILS Z CAT I, LOC Z RWY 14



MSA
46km from ARP

GNSS is required

Radar control is required

RNAV 1
For initial approach
and missed approach

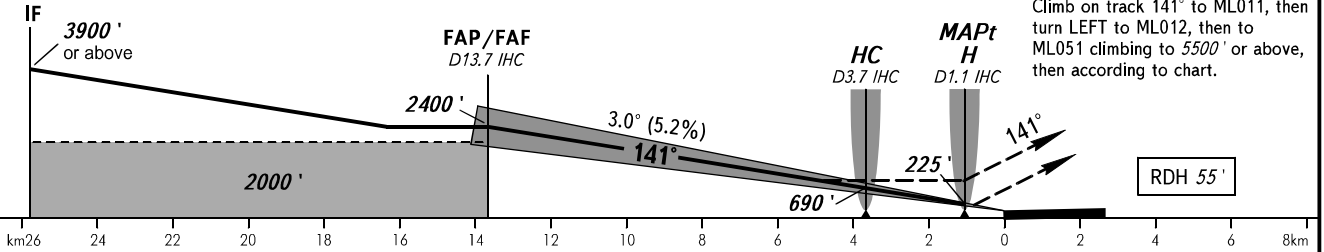
Feet (QNH)	Metres (QFE)
10000	(3050)
9800	(2990)
5500	(1680)
3900	(1190)
2400	(735)
2118	(646)
1774	(541)
1431	(437)
1087	(332)
743	(227)
690	(211)
399	(122)
225	(69)

Alt set: -QNH(QFE on req);
-hPa(mm on req).

BEARINGS AND TRACKS ARE MAG.
ELEV. ALT IN FEET
DISTANCES IN KILOMETRES

DME IHC	12.0	10.0	8.0	6.0	4.0	2.0
ALTITUDE	2118'	1774'	1431'	1087'	743'	399'

ML009 FAF is fixed by TAR (DIST 15.0). MAPt at LMM H. Timing not authorized for defining MAPt.



OCA(H)		A	B	C	D
Straight-in Approach	CAT I	182' (182')	192' (191')	201' (201')	211' (211')
	LOC	740' (740')	740' (740')	740' (740')	740' (740')
Circling		790' (770')	830' (810')	1720' (1700')	1870' (1860')

1 TRANSITION LEVEL:
- FL110 when QNH is 1013 hPa (760mm mercury column) or above;
- FL120 when QNH is 977 hPa (733mm mercury column) or above, but less than 1013 hPa (760mm mercury column);
- FL130 when QNH is less than 977 hPa (733mm mercury column).

WARNING:
1. Visual manoeuvring west of the aerodrome is PROHIBITED.
2. DME IHC reads zero at RWY 14 THR.

GROUND SPEED	km/h	150	180	210	240	270	300	330	360	390	420	450
	RATE OF DESCENT	m/s	2.2	2.6	3.0	3.5	3.9	4.3	4.8	5.2	5.6	6.1
	ft/min	427	512	597	682	768	853	938	1024	1109	1194	1280

CHANGE: NIL