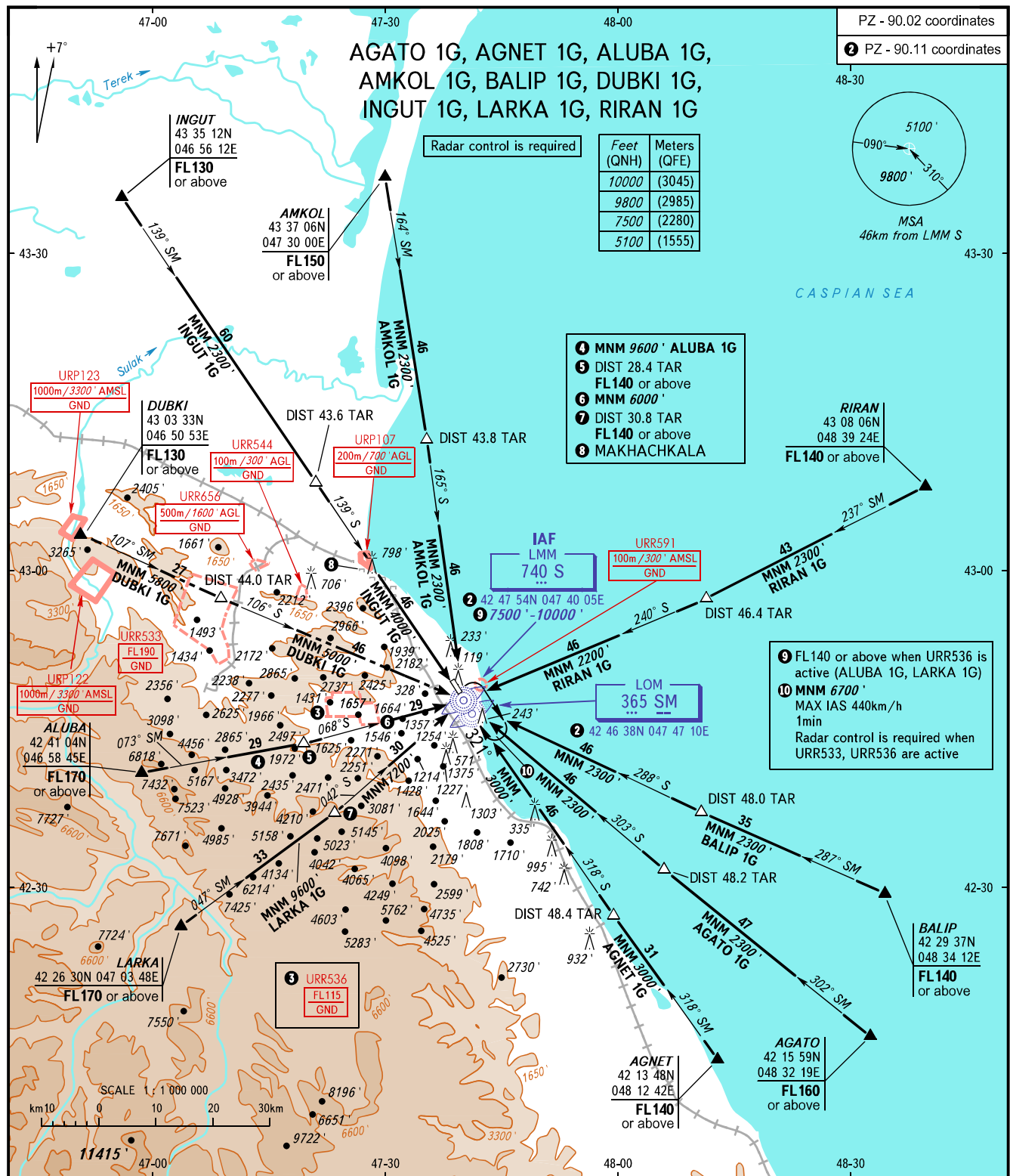


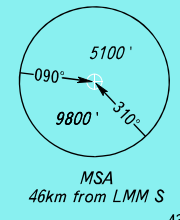
STANDARD ARRIVAL CHART
INSTRUMENT (STAR) - ICAO

TRANSITION
LEVEL: **1**

MAKHACHKALA, RUSSIA
UYTASH
RWY 32



Feet (QNH)	Meters (QFE)
10000	(3045)
9800	(2985)
7500	(2280)
5100	(1555)



- 1 MNM 9600' ALUBA 1G
- 2 DIST 28.4 TAR
- 3 FL140 or above
- 4 MNM 6000'
- 5 DIST 30.8 TAR
- 6 FL140 or above
- 7 MAKHACHKALA

- 9 FL140 or above when URR536 is active (ALUBA 1G, LARKA 1G)
 - 10 MNM 6700'
- MAX IAS 440km/h
1min
Radar control is required when URR533, URR536 are active

APPROACH **119.700**
RADAR **121.300**
TOWER **121.300**

1 TRANSITION LEVEL:
- FL110 when QNH is 1013 hPa (760mm mercury column) or above;
- FL120 when QNH is 977 hPa (733mm mercury column);
but less than 1013 hPa (760mm mercury column);
- FL130 when QNH is less than 977 hPa (733mm mercury column).

WARNING
DUBKI 1G is not AVBL when URR533 is active.

BEARINGS AND TRACKS ARE MAGNETIC
ALTITUDES AND ELEVATIONS IN FEET
DISTANCES IN KILOMETRES

CHANGE: Holding area