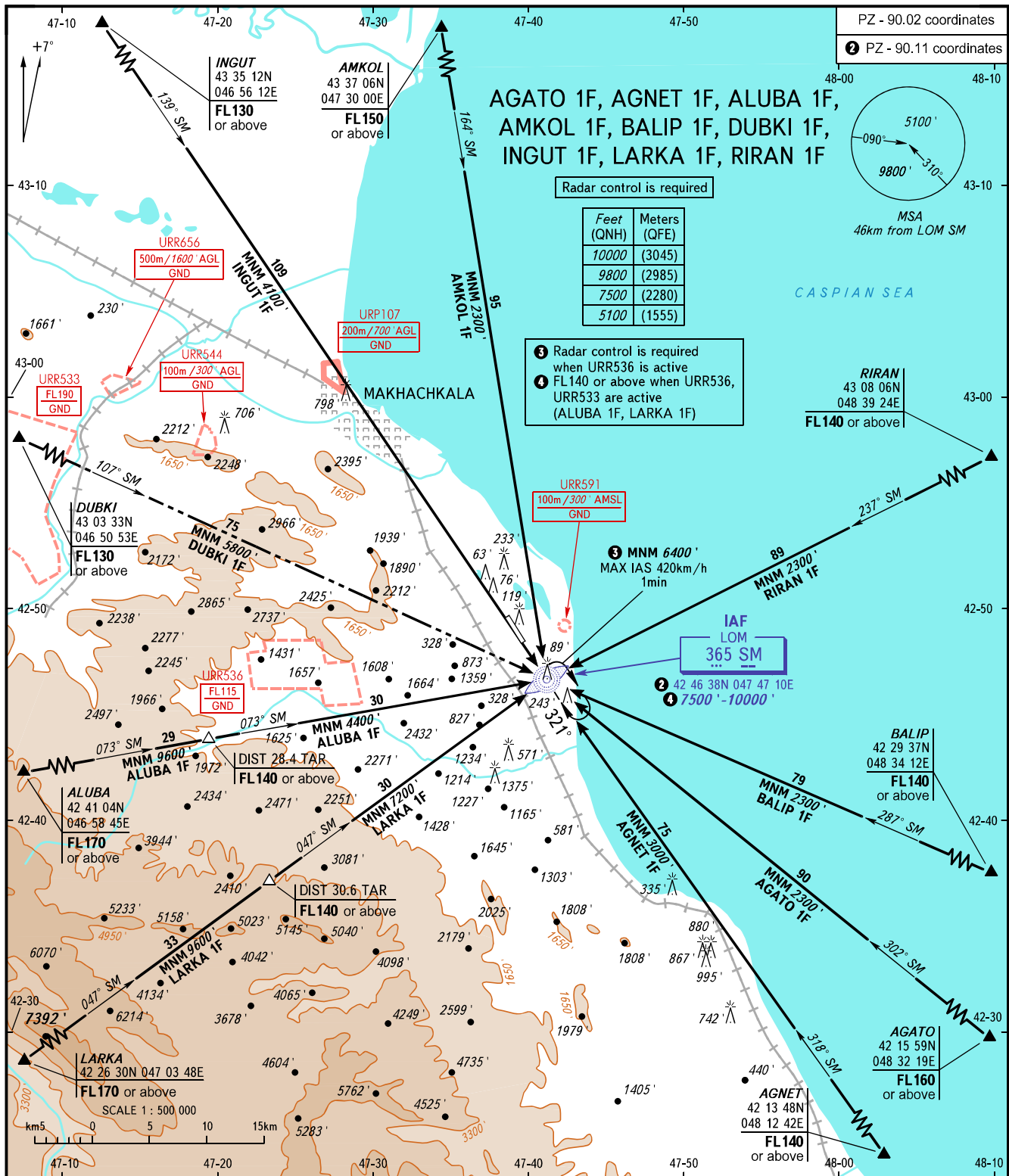


STANDARD ARRIVAL CHART
INSTRUMENT (STAR) - ICAO

MAKHACHKALA, RUSSIA
UYTASH
RWY 32

TRANSITION
LEVEL: ①



APPROACH 119.700
RADAR 121.300
TOWER 121.300

- ① TRANSITION LEVEL:
- FL110 when QNH is 1013 hPa (760mm mercury column) or above;
 - FL120 when QNH is 977 hPa (733mm mercury column) or above, but less than 1013 hPa (760mm mercury column);
 - FL130 when QNH is less than 977 hPa (733mm mercury column).

WARNING

DUBKI 1F is not AVBL when URR533 is active.

BEARINGS AND TRACKS ARE MAGNETIC
ALTITUDES AND ELEVATIONS IN FEET
DISTANCES IN KILOMETRES