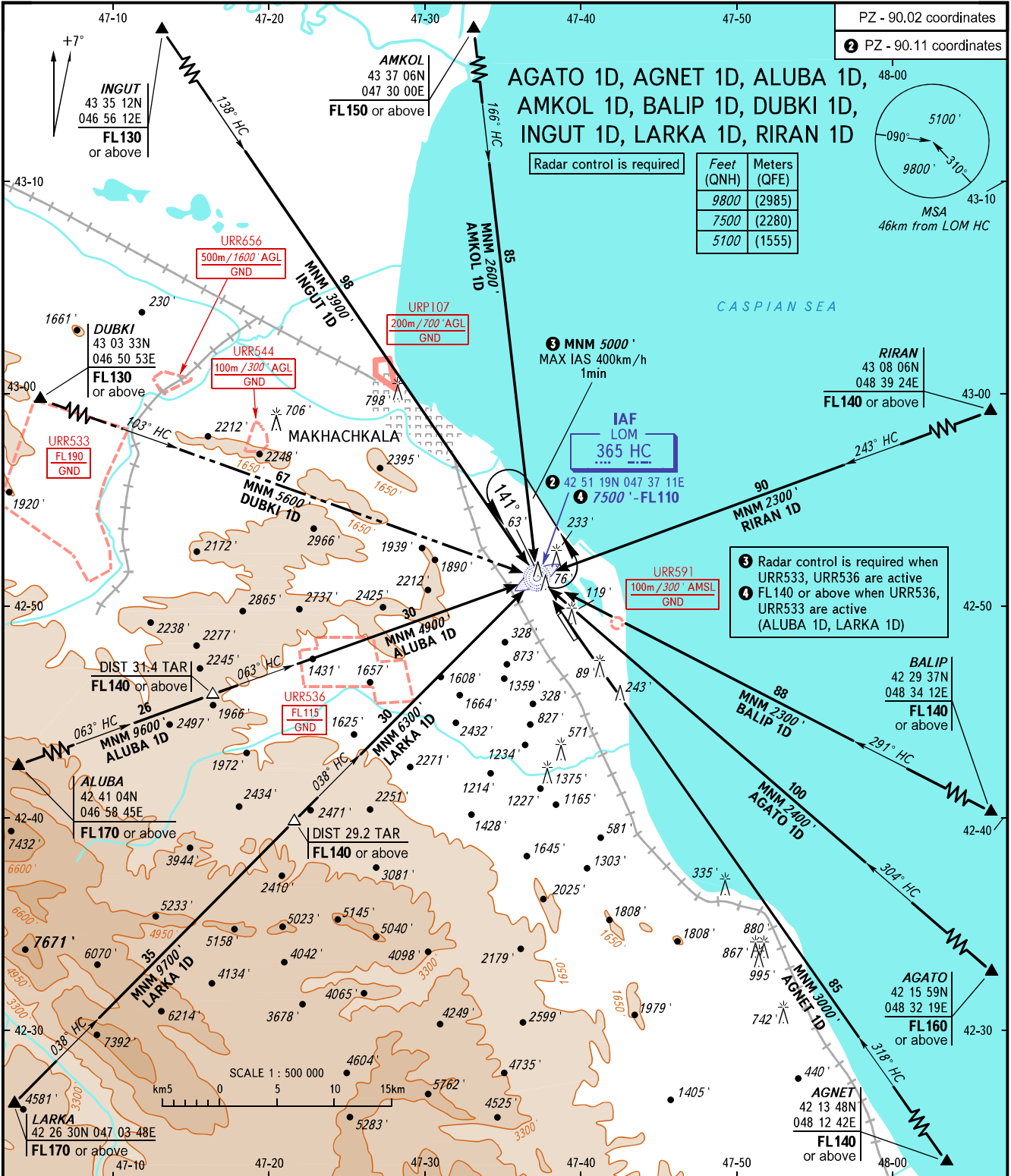


STANDARD ARRIVAL CHART
INSTRUMENT (STAR) - ICAO

MAKHACHKALA, RUSSIA
UYTASH
RWY 14

TRANSITION
LEVEL: **1**

PZ - 90.02 coordinates
2 PZ - 90.11 coordinates



APPROACH **119.700**
RADAR **121.300**
TOWER **121.300**

- 1** TRANSITION LEVEL:
- FL110 when QNH is 1013 hPa (760mm mercury column) or above;
 - FL120 when QNH is 977 hPa (733mm mercury column) or above, but less than 1013 hPa (760mm mercury column);
 - FL130 when QNH is less than 977 hPa (733mm mercury column).

WARNING
DUBKI 1D is not AVBL when URR533 is active.

BEARINGS AND TRACKS ARE MAGNETIC
ALTITUDES AND ELEVATIONS IN FEET
DISTANCES IN KILOMETRES

CHANGE: Holding area