

STANDARD ARRIVAL CHART
INSTRUMENT (STAR) - ICAO

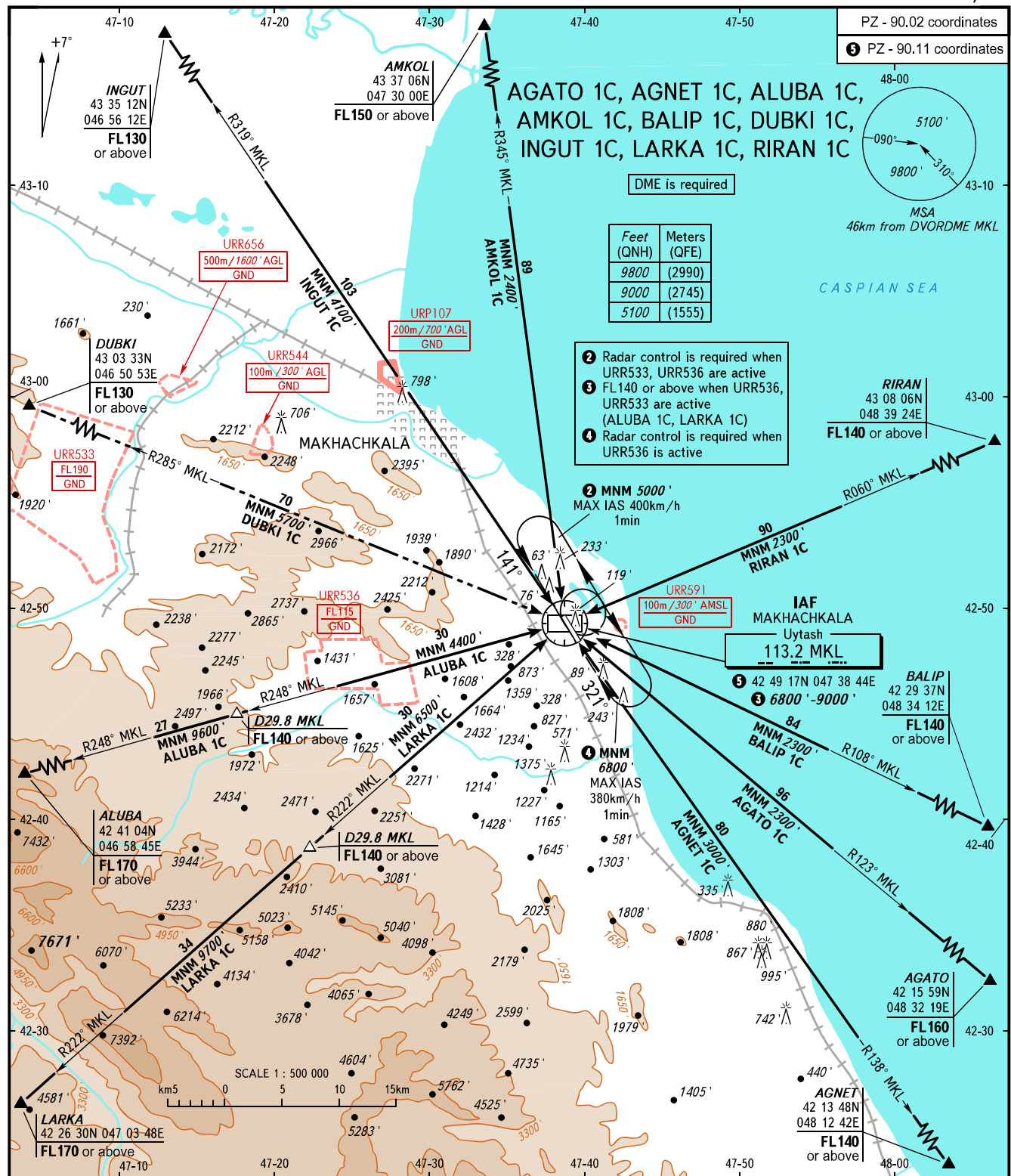
MAKHACHKALA, RUSSIA

UYTASH

RWY 14/32

TRANSITION
LEVEL : ①

PZ - 90.02 coordinates
⑤ PZ - 90.11 coordinates



APPROACH 119.700
RADAR 121.300
TOWER 121.300

① TRANSITION LEVEL:
- FL110 when QNH is 1013 hPa (760mm mercury column) or above;
- FL120 when QNH is 977 hPa (733mm mercury column) or above, but less than 1013 hPa (760mm mercury column);
- FL130 when QNH is less than 977 hPa (733mm mercury column).

WARNING
DUBKI 1C is not AVBL when URR533 is active.

CHANGE: Holding area

BEARINGS AND TRACKS ARE MAGNETIC
ALTITUDES AND ELEVATIONS IN FEET
DISTANCES IN KILOMETRES