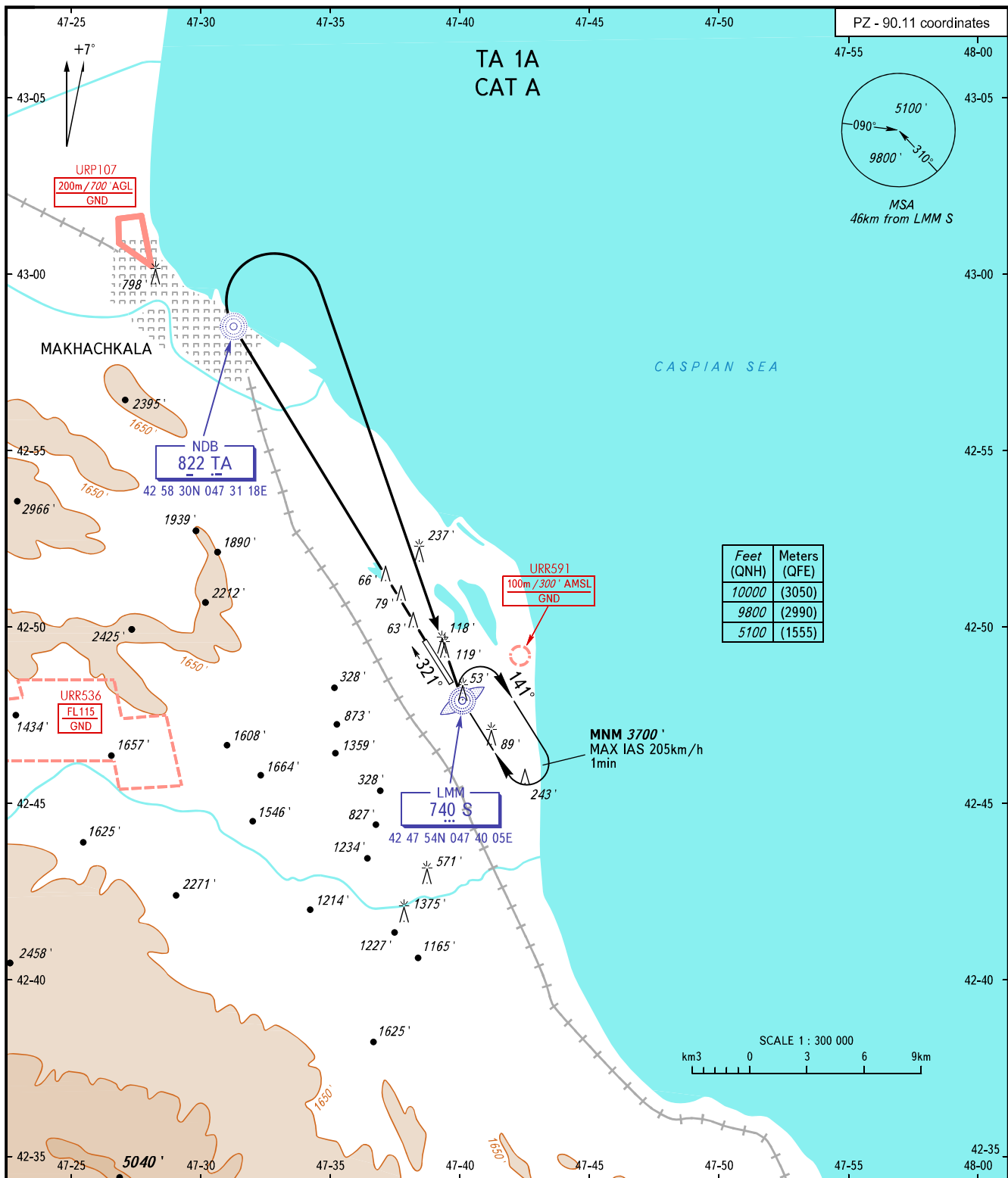


STANDARD DEPARTURE CHART  
INSTRUMENT (SID) - ICAO

TRANSITION  
ALTITUDE : 10000'

MAKHACHKALA, RUSSIA  
UYTASH  
RWY 32



TOWER 121.300  
RADAR 121.300  
APPROACH 119.700

**WARNING**  
Radar control is required when URR536 is active.  
The minimum climb gradient is the following  
(required due to obstacles):  
- 4.3% up to 3000'.

BEARINGS AND TRACKS ARE MAGNETIC  
ALTITUDES AND ELEVATIONS IN FEET  
DISTANCES IN KILOMETRES