

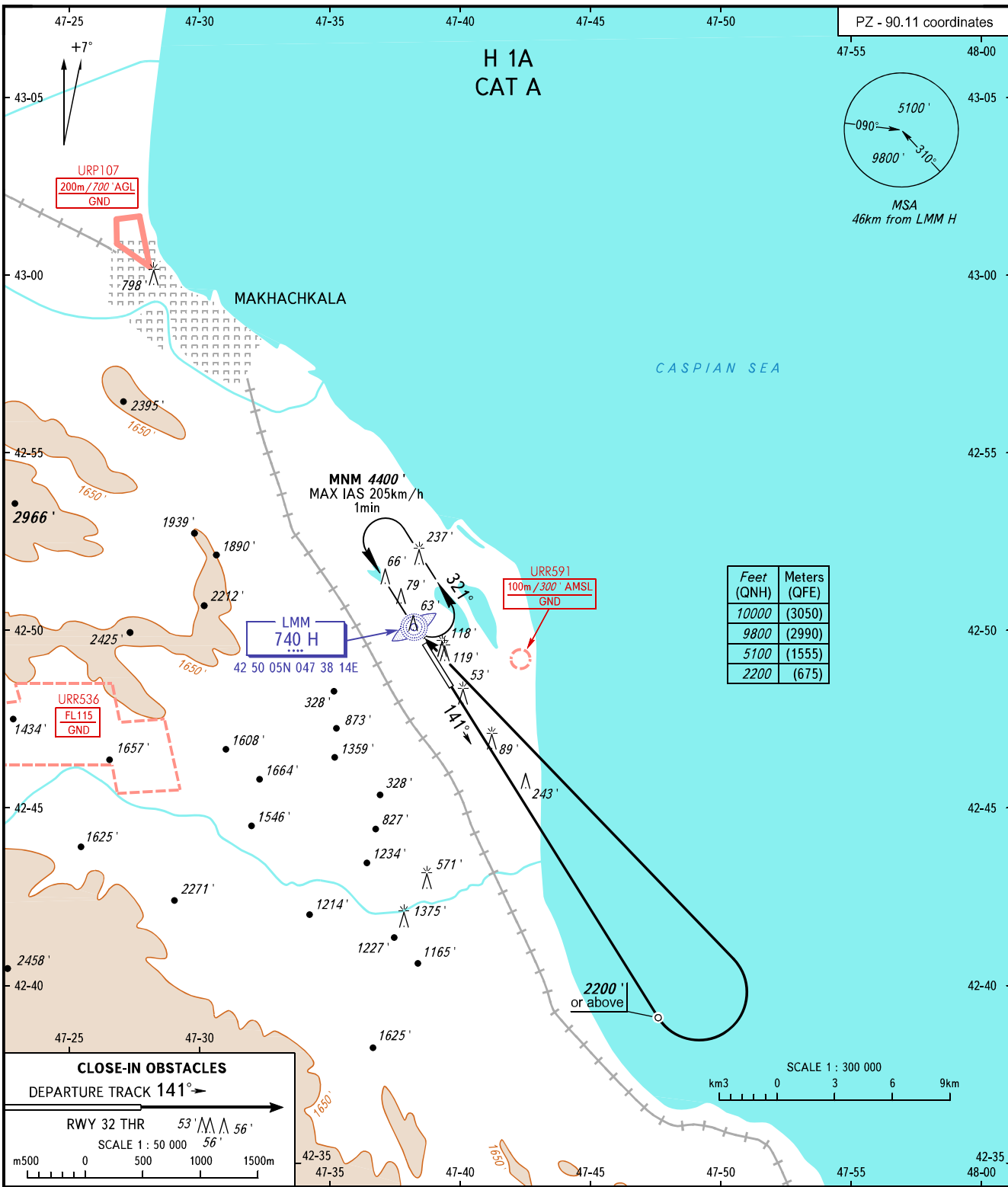
STANDARD DEPARTURE CHART
INSTRUMENT (SID) - ICAO

TRANSITION
ALTITUDE : 10000'

MAKHACHKALA, RUSSIA

UYTASH

RWY 14



Feet (QNH)	Meters (QFE)
10000	(3050)
9800	(2990)
5100	(1555)
2200	(675)

CLOSE-IN OBSTACLES
DEPARTURE TRACK 141°

RWY 32 THR 53' 56'

SCALE 1 : 50 000

m 500 0 500 1000 1500m

TOWER 121.300
RADAR 121.300
APPROACH 119.700

WARNING:
1. Turn before passing DER is PROHIBITED.
2. Radar control is required when URR536 is active.

BEARINGS AND TRACKS ARE MAGNETIC
ALTITUDES AND ELEVATIONS IN FEET
DISTANCES IN KILOMETRES

CHANGE: New chart