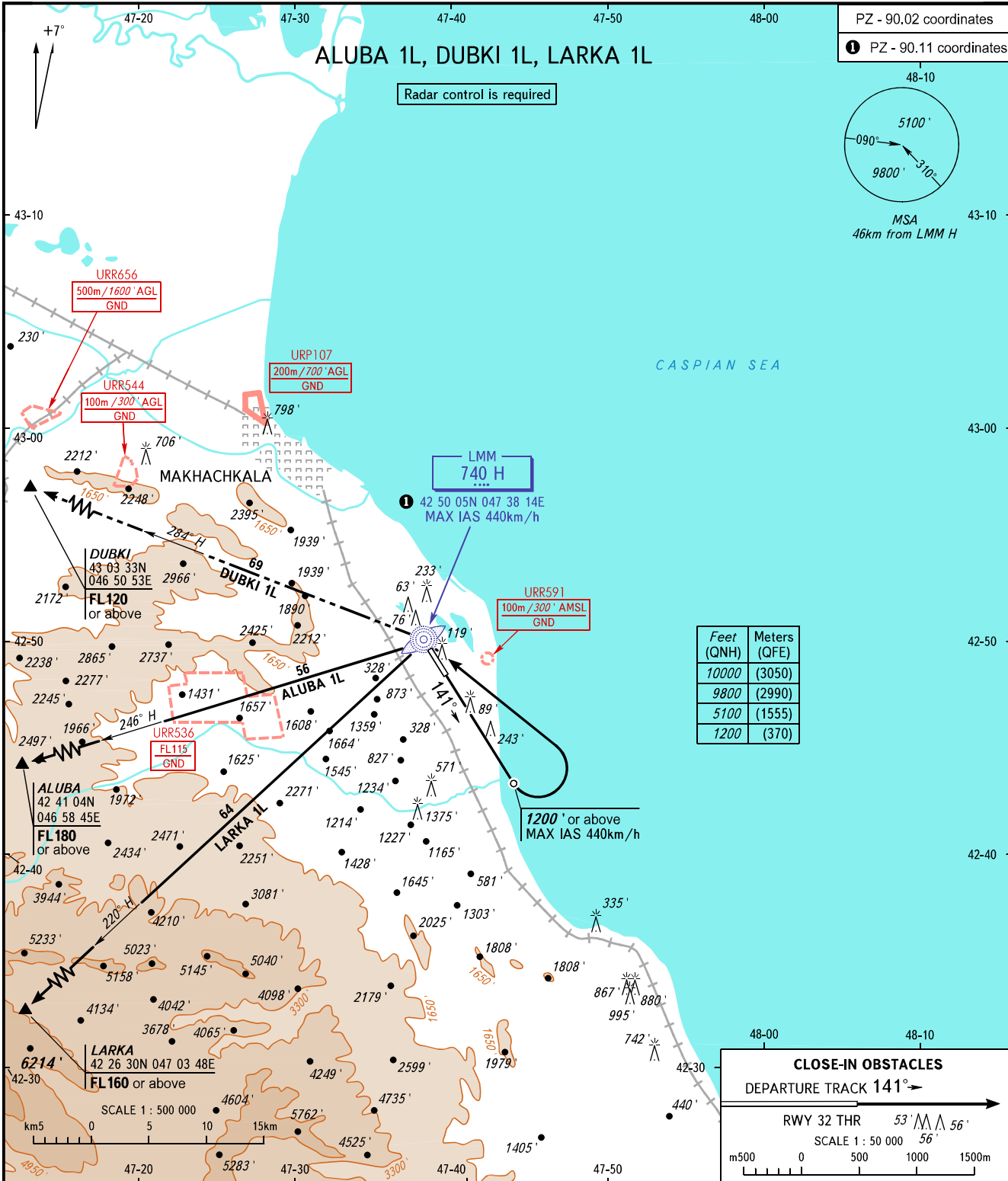


STANDARD DEPARTURE CHART
INSTRUMENT (SID) - ICAO

TRANSITION
ALTITUDE : 10000'

MAKHACHKALA, RUSSIA

UYTASH
RWY 14



TOWER 121.300
RADAR 121.300
APPROACH 119.700

The minimum climb gradient are as follows (required due to the airspace limitation):

- 6.5% up to FL180 for ALUBA 1L,
- 3.8% up to FL120 for DUBKI 1L,
- 5.2% up to FL160 for LARKA 1L.

(required due to obstacles):

- 4.4% up to 9500' for ALUBA 1L,
- 4.3% up to 3600' for DUBKI 1L,
- 4.3% up to 3700' for LARKA 1L.

WARNING:

1. Turn before passing DER is PROHIBITED.
2. DUBKI 1L is not AVBL when URR533, URR536 are active.
3. ALUBA 1L, LARKA 1L are not AVBL when URR536 is active.

BEARINGS AND TRACKS ARE MAGNETIC
ALTITUDES AND ELEVATIONS IN FEET
DISTANCES IN KILOMETRES