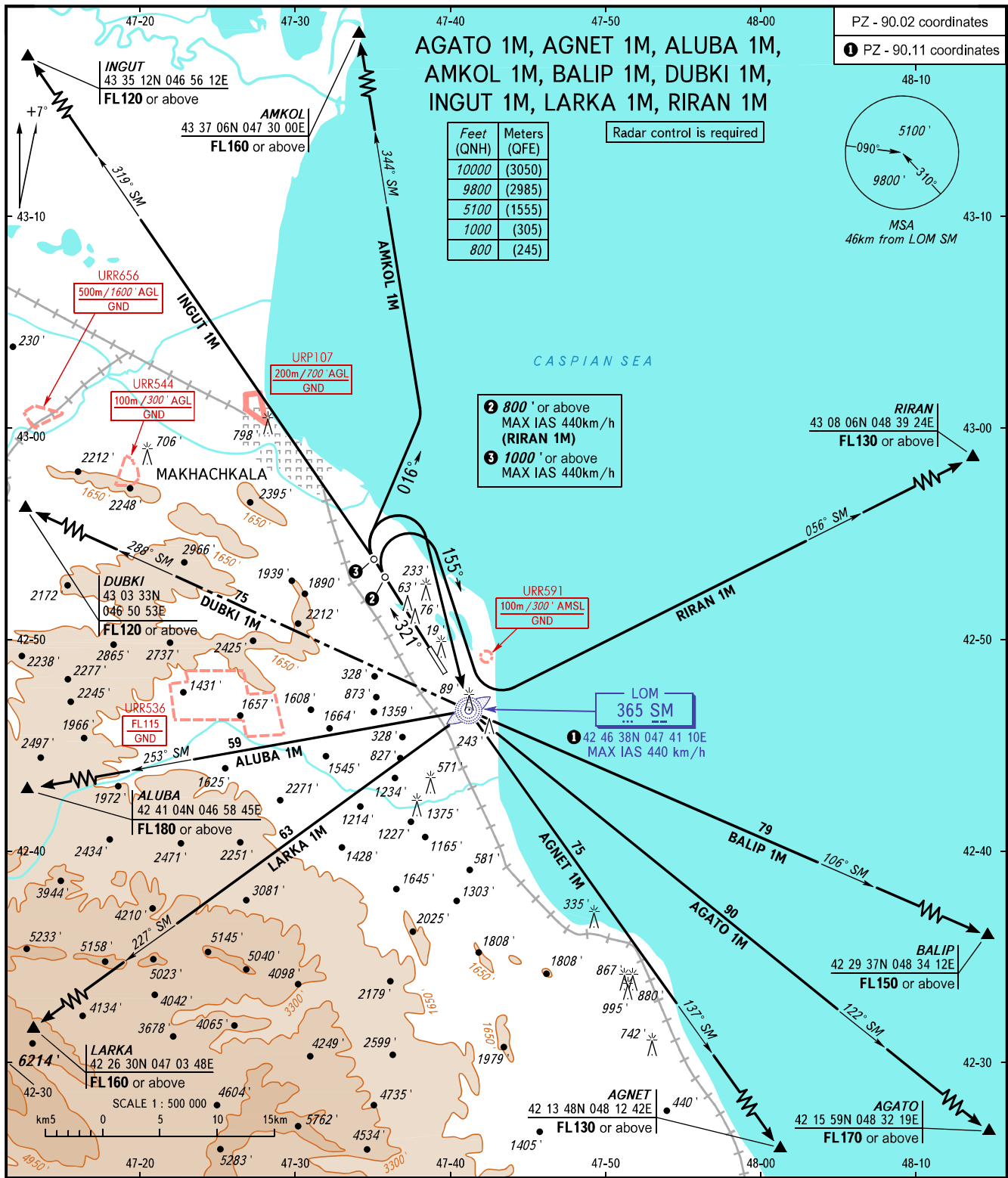


STANDARD DEPARTURE CHART
INSTRUMENT (SID) - ICAO

TRANSITION
ALTITUDE : 10000'

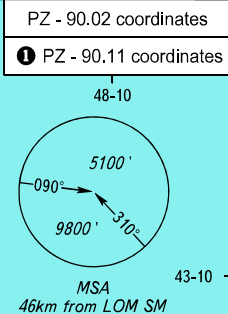
MAKHACHKALA, RUSSIA
UYTASH
RWY 32



AGATO 1M, AGNET 1M, ALUBA 1M,
AMKOL 1M, BALIP 1M, DUBKI 1M,
INGUT 1M, LARKA 1M, RIRAN 1M

Feet (QNH)	Meters (QFE)
10000	(3050)
9800	(2985)
5100	(1555)
1000	(305)
800	(245)

Radar control is required



- ② 800' or above
MAX IAS 440km/h
(RIRAN 1M)
- ③ 1000' or above
MAX IAS 440km/h

TOWER **121.300**
RADAR **121.300**
APPROACH **119.700**

BEARINGS AND TRACKS ARE MAGNETIC
ALTITUDES AND ELEVATIONS IN FEET
DISTANCES IN KILOMETRES

The minimum climb gradient are as follows
(required due to the airspace structure):

- 4.3% up to FL170 for AGATO 1M,
- 3.7% up to FL130 for AGNET 1M,
- 6.0% up to FL180 for ALUBA 1M,
- 5.4% up to FL160 for AMKOL 1M,
- 4.1% up to FL150 for BALIP 1M,
- 3.6% up to FL120 for INGUT 1M,
- 5.2% up to FL160 for LARKA 1M,
- 3.7% up to FL130 for RIRAN 1M.

WARNING:

1. Turn before passing DER is PROHIBITED.
2. DUBKI 1M is not AVBL when URR533, URR536 are active.
3. ALUBA 1M is not AVBL when URR536 is active.

The minimum climb gradient are as follows
(required due to obstacles):

- 3.4% up to 4000' for AGNET 1M,
- 4.2% up to 9500' for ALUBA 1M,
- 3.8% up to 4200' for DUBKI 1M,
- 5.2% up to 2200' for INGUT 1M,
- 4.8% up to 7200' for LARKA 1M,
- 4.1% up to 1900' for RIRAN 1M.