

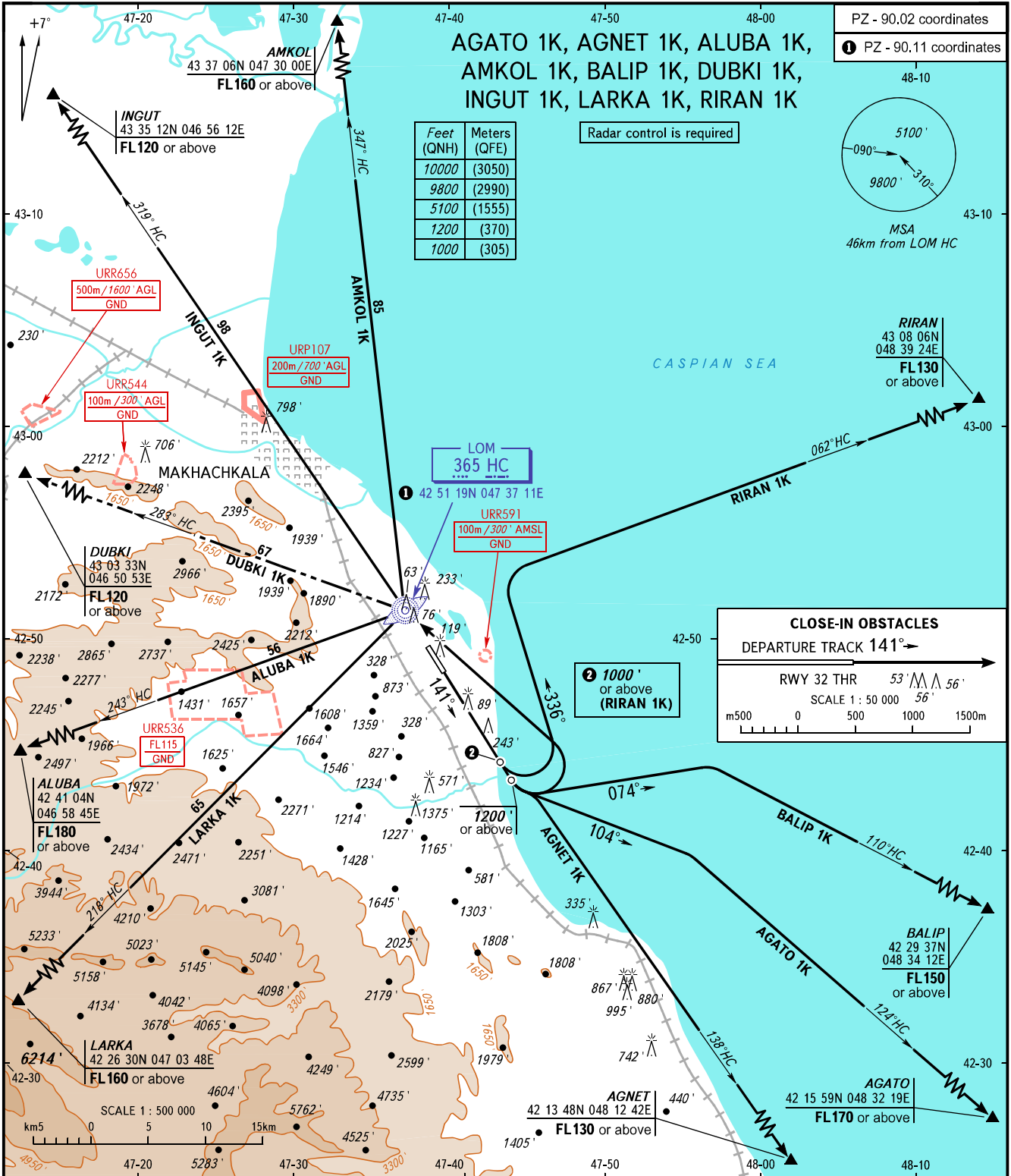
STANDARD DEPARTURE CHART
INSTRUMENT (SID) - ICAO

TRANSITION
ALTITUDE : 10000'

MAKHACHKALA, RUSSIA

UYTASH

RWY 14



TOWER 121.300
RADAR 121.300
APPROACH 119.700

The minimum climb gradient are as follows (required due to the airspace structure):

- 5.5% up to FL170 for AGATO 1K,
- 5.0% up to FL130 for AGNET 1K,
- 6.3% up to FL180 for ALUBA 1K,
- 4.2% up to FL160 for AMKOL 1K,
- 5.4% up to FL150 for BALIP 1K,
- 3.7% up to FL120 for DUBKI 1K,
- 5.0% up to FL160 for LARKA 1K,
- 3.8% up to FL130 for RIRAN 1K.

The minimum climb gradient are as follows (required due to obstacles):

- 4.3% up to 9500' for ALUBA 1K,
- 4.2% up to 3700' for AMKOL 1K,
- 4.2% up to 3700' for INGUT 1K,
- 4.2% up to 7200' for LARKA 1K,
- 4.2% up to 3700' for RIRAN 1K.

WARNING:

1. Turn before passing DER is PROHIBITED.
2. DUBKI 1K is not AVBL when URR533, URR536 are active.
3. ALUBA 1K, LARKA 1K are not AVBL when URR536 is active.
4. Radar control required when URR533 is active.

BEARINGS AND TRACKS ARE MAGNETIC
ALTITUDES AND ELEVATIONS IN FEET
DISTANCES IN KILOMETRES