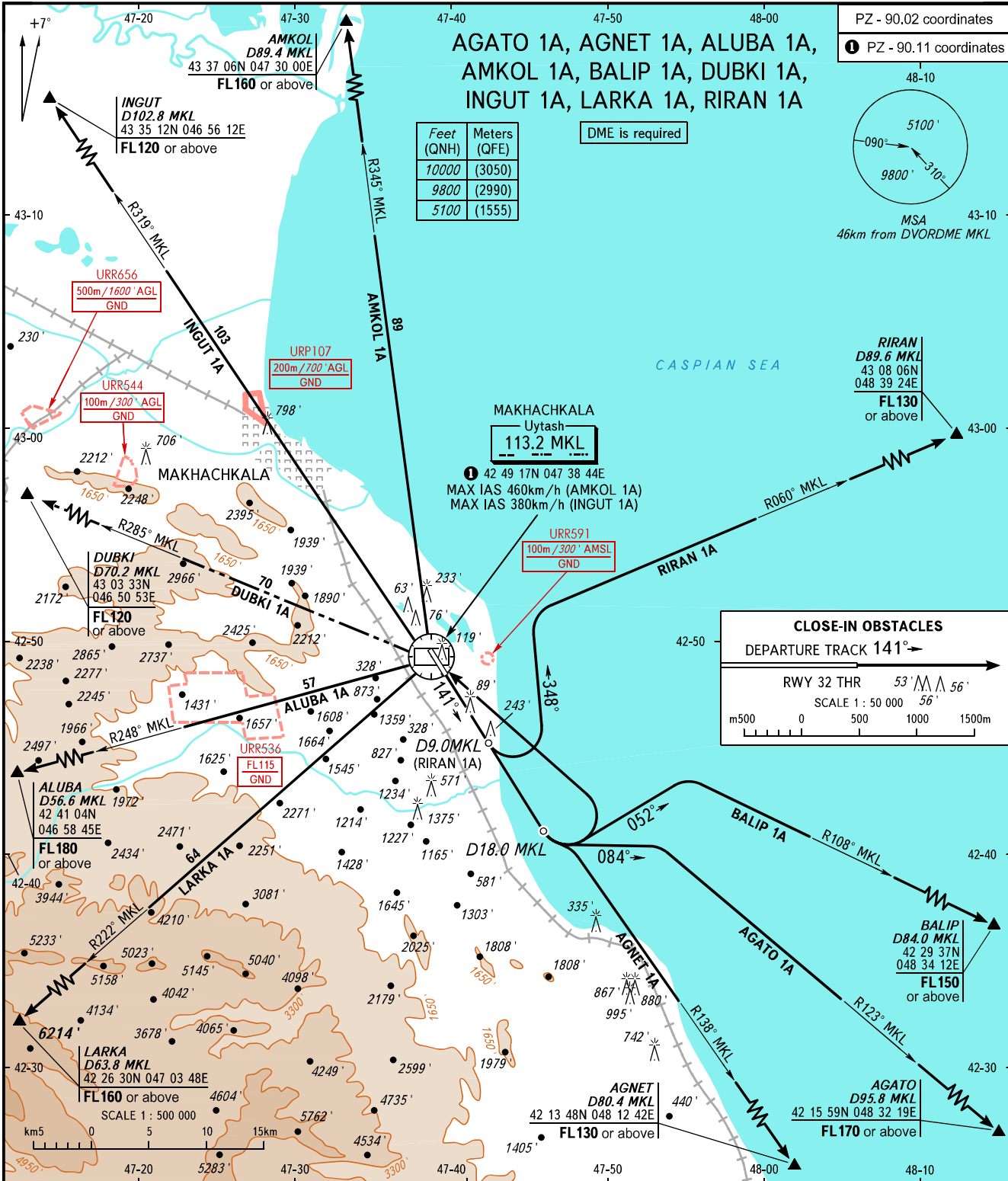


STANDARD DEPARTURE CHART  
INSTRUMENT (SID) - ICAO

TRANSITION  
ALTITUDE : 10000'

MAKHACHKALA, RUSSIA

UYTASH  
RWY 14



TOWER 121.300  
RADAR 121.300  
APPROACH 119.700

The minimum climb gradients are as follows (required due to the airspace structure):

- 5.4% up to FL170 for AGATO 1A,
- 5.1% up to FL130 for AGNET 1A,
- 5.2% up to FL180 for ALUBA 1A,
- 3.5% up to FL160 for AMKOL 1A,
- 5.1% up to FL150 for BALIP 1A,
- 4.2% up to FL160 for LARKA 1A,
- 3.8% up to FL130 for RIRAN 1A.

(required due to obstacles):

- 3.5% up to 9400' for ALUBA 1A,
- 3.4% up to 9500' for LARKA 1A.

**WARNING:**

1. ALUBA 1A, LARKA 1A are not AVBL when URR536 is active.
2. Radar control is required when URR533 is active.
3. DUBKI 1A is not AVBL when URR533, URR536 are active.

BEARINGS AND TRACKS ARE MAGNETIC  
ALTITUDES AND ELEVATIONS IN FEET  
DISTANCES IN KILOMETRES