

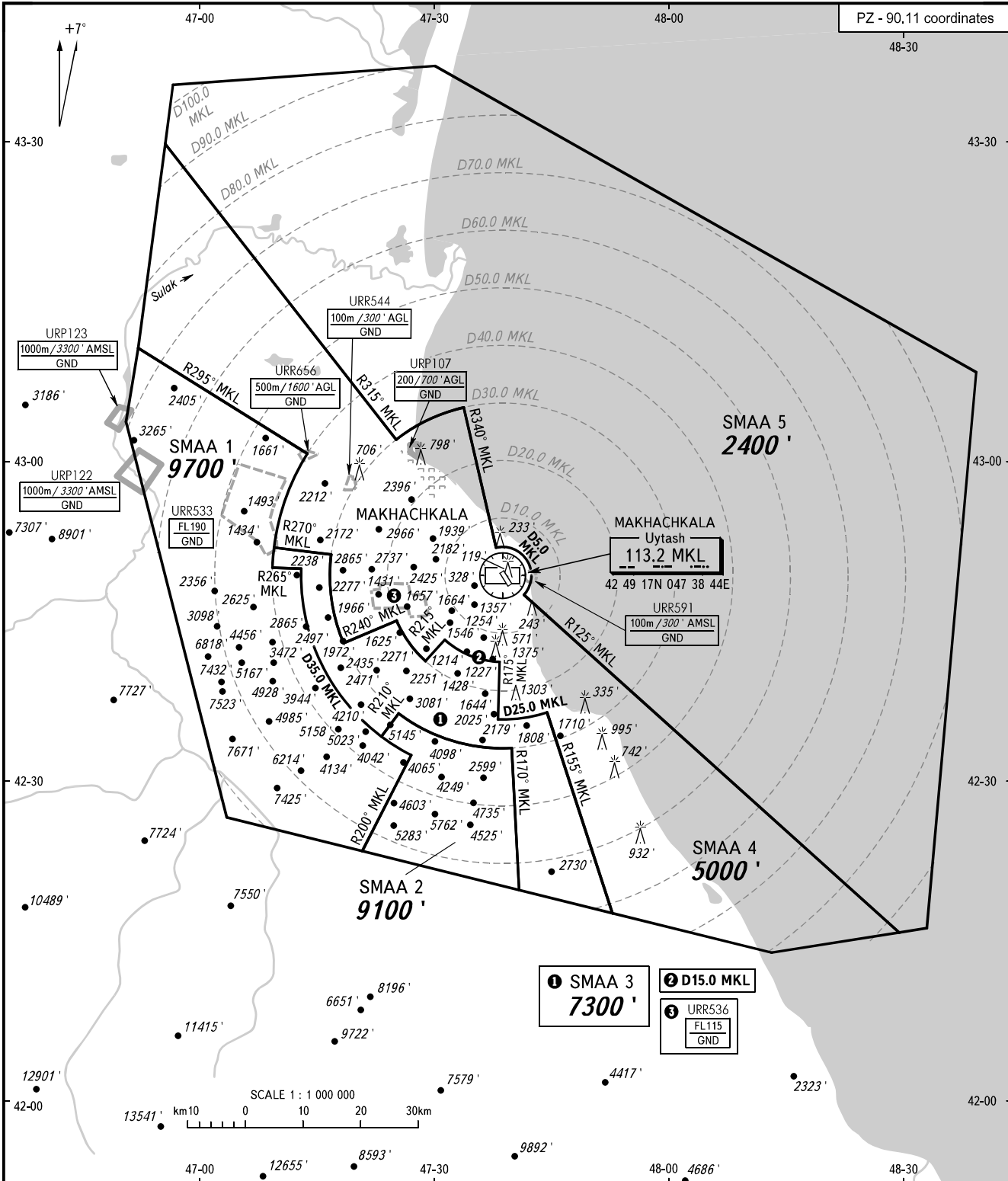
ATC SURVEILLANCE MINIMUM
ALTITUDE CHART - ICAO

ELEV
16'

TRANSITION ALTITUDE: 10000'

MAKHACHKALA, RUSSIA

UYTASH



APPROACH 119.700
RADAR 121.300
TOWER 121.300

WARNING

The altitude value of SMAA is calculated for ISA conditions (+15°C). When vectoring is executed at a temperature of 0°C or below, the minimum vectoring altitude must be corrected by altimeter temperature correction.

NOTE

The chart may only be used for cross-checking of altitudes assigned while the aircraft is identified under radar control.

BEARINGS AND TRACKS ARE MAGNETIC
ALTITUDES AND ELEVATIONS IN FEET
DISTANCES IN KILOMETRES

SURVEILLANCE MINIMUM ALTITUDE AREAS		
IDENT	MNM ALT	LATERAL LIMITS (PZ-90.11 coordinates)
SMAA 1	9700 ft	431028.3N 0465202.2E – 430040.6N 0471346.0E, then anticlockwise by arc of a circle radius of 40 KM centred at 424916.6N 0473843.9E to 424957.9N 0470923.9E – 424953.1N 0471303.9E, then anticlockwise by arc of a circle radius of 35 KM centred at 424916.6N 0473843.9E to 423225.4N 0472708.0E – 422324.4N 0472058.6E – 422630.0N 0470348.1E – 430333.1N 0465053.0E – 431028.3N 0465202.2E
SMAA 2	9100 ft	422324.4N 0472058.6E – 423225.4N 0472708.0E, then clockwise by arc of a circle radius of 35 KM centred at 424916.6N 0473843.9E to 423409.7N 0472320.8E – 423619.4N 0472532.2E, then anticlockwise by arc of a circle radius of 30 KM centred at 424916.6N 0473843.9E to 423305.9N 0473953.0E – 421946.2N 0474049.7E – 422324.4N 0472058.6E
SMAA 3	7300 ft	424957.9N 0470923.9E – 425150.7N 0470935.0E – 425112.9N 0471652.5E, then anticlockwise by arc of a circle radius of 30 KM centred at 424916.6N 0473843.9E to 424254.8N 0471830.5E – 424502.5N 0472514.5E, then anticlockwise by arc of a circle radius of 20 KM centred at 424916.6N 0473843.9E to 424114.5N 0472856.2E – 424315.1N 0473122.9E, then anticlockwise by arc of a circle radius of 15 km centred at 424916.6N 0473843.9E to 424110.9N 0473821.0E – 423547.1N 0473805.9E, then anticlockwise by arc of a circle radius of 25 KM centred at 424916.6N 0473843.9E to 423626.2N 0474423.0E – 421734.9N 0475236.7E – 421946.2N 0474049.7E – 423305.9N 0473953.0E, then clockwise by arc of a circle radius of 30 KM centred at 424916.6N 0473843.9E to 423619.4N 0472532.2E – 423409.7N 0472320.8E, then clockwise by arc of a circle radius of 35 KM centred at 424916.6N 0473843.9E to 424953.1N 0471303.9E – 424957.9N 0470923.9E
SMAA 4	5000 ft	421734.9N 0475236.7E – 423626.2N 0474423.0E, then clockwise by arc of a circle radius of 25 KM centred at 424916.6N 0473843.9E to 423547.0N 0473809.6E – 424110.9N 0473821.0E, then clockwise by arc of a circle radius of 15 KM centred at 424916.6N 0473843.9E to 424315.1N 0473122.9E – 424114.5N 0472856.2E, then clockwise by arc of a circle radius of 20 KM centred at 424916.6N 0473843.9E to 424502.5N 0472514.5E – 424254.8N 0471830.5E, then clockwise by arc of a circle radius of 30 KM centred at 424916.6N 0473843.9E to 425112.9N 0471652.5E – 425150.7N 0470935.0E, then clockwise by arc of a circle radius of 40 KM centred at 424916.6N 0473843.9E to 430040.6N 0471346.0E – 431028.3N 0465202.2E – 432939.1N 0465515.6E – 430201.7N 0472508.0E, then clockwise by arc of a circle radius of 30 KM centred at 424916.6N 0473843.9E to 430503.6N 0473345.5E – 425154.5N 0473754.3E, then clockwise by arc of a circle radius of 5 KM centred at 424916.6N 0473843.9E to 424728.2N 0474127.4E – 421536.1N 0482850.5E – 421348.1N 0481242.0E – 421734.9N 0475236.7E
SMAA 5	2400 ft	432939.1N 0465515.6E – 433511.9N 0465612.0E – 433705.9N 0473000.0E – 430806.0N 0483923.9E – 421559.1N 0483219.0E – 421536.1N 0482850.5E – 424728.2N 0474127.4E, then anticlockwise by arc of a circle radius of 5 KM centred at 424916.6N 0473843.9E to 425154.5N 0473754.3E – 430503.6N 0473345.5E, then anticlockwise by arc of a circle radius of 30 KM centred at 424916.6N 0473843.9E to 430201.7N 0472508.0E – 432939.1N 0465515.6E