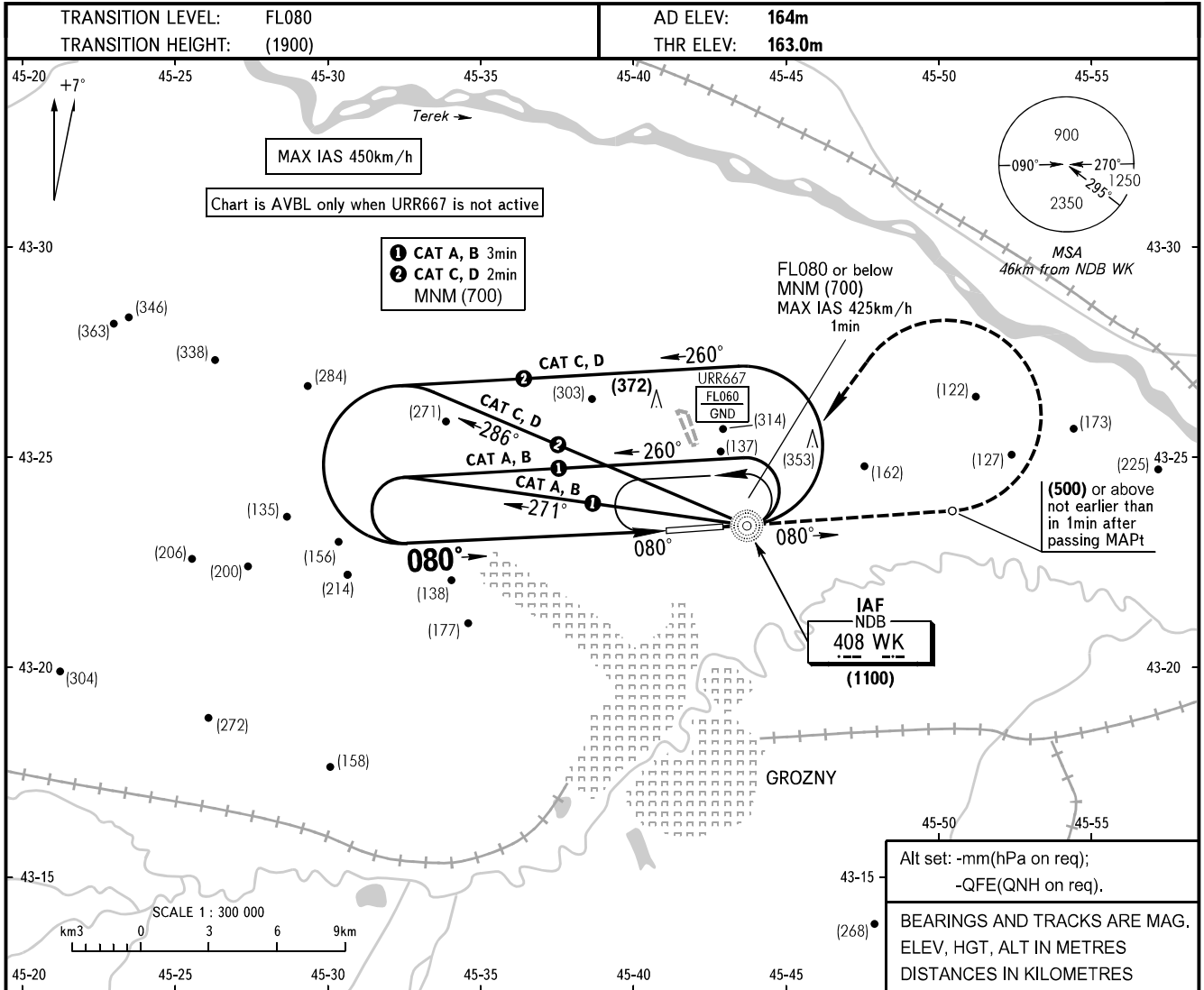


**INSTRUMENT
APPROACH
CHART - ICAO**

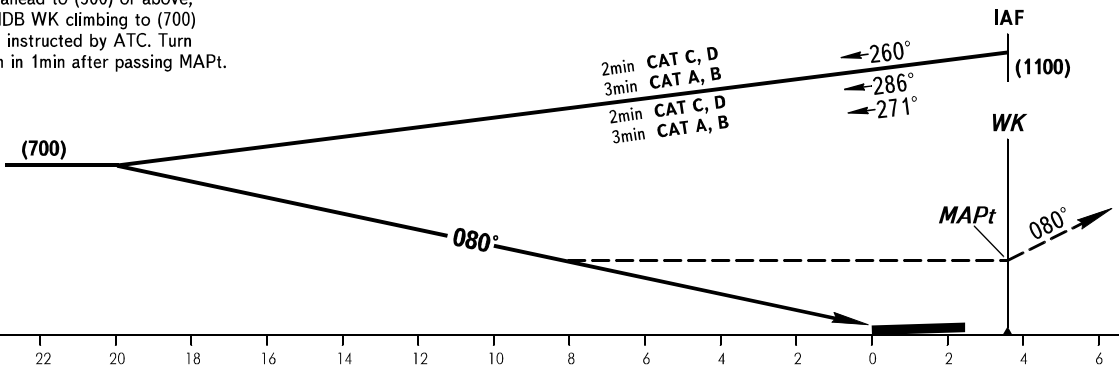
**GROZNY, RUSSIA
SEVERNY
NDB W RWY 08**

TOWER START
120.200
119.000



MISSED APPROACH

Climb straight ahead to (500) or above, turn LEFT to NDB WK climbing to (700) or above or as instructed by ATC. Turn not earlier than in 1min after passing MAPt.



OCA(H)		A	B	C	D
Straight-in Approach	WO FAF	470(310)	470(310)	470(310)	470(310)
Circling		470(310)	595(430)	660(495)	660(495)

WARNING
Visual manoeuvring south of the AD is PROHIBITED.
MAPt at NDB WK.

CHANGE: New chart