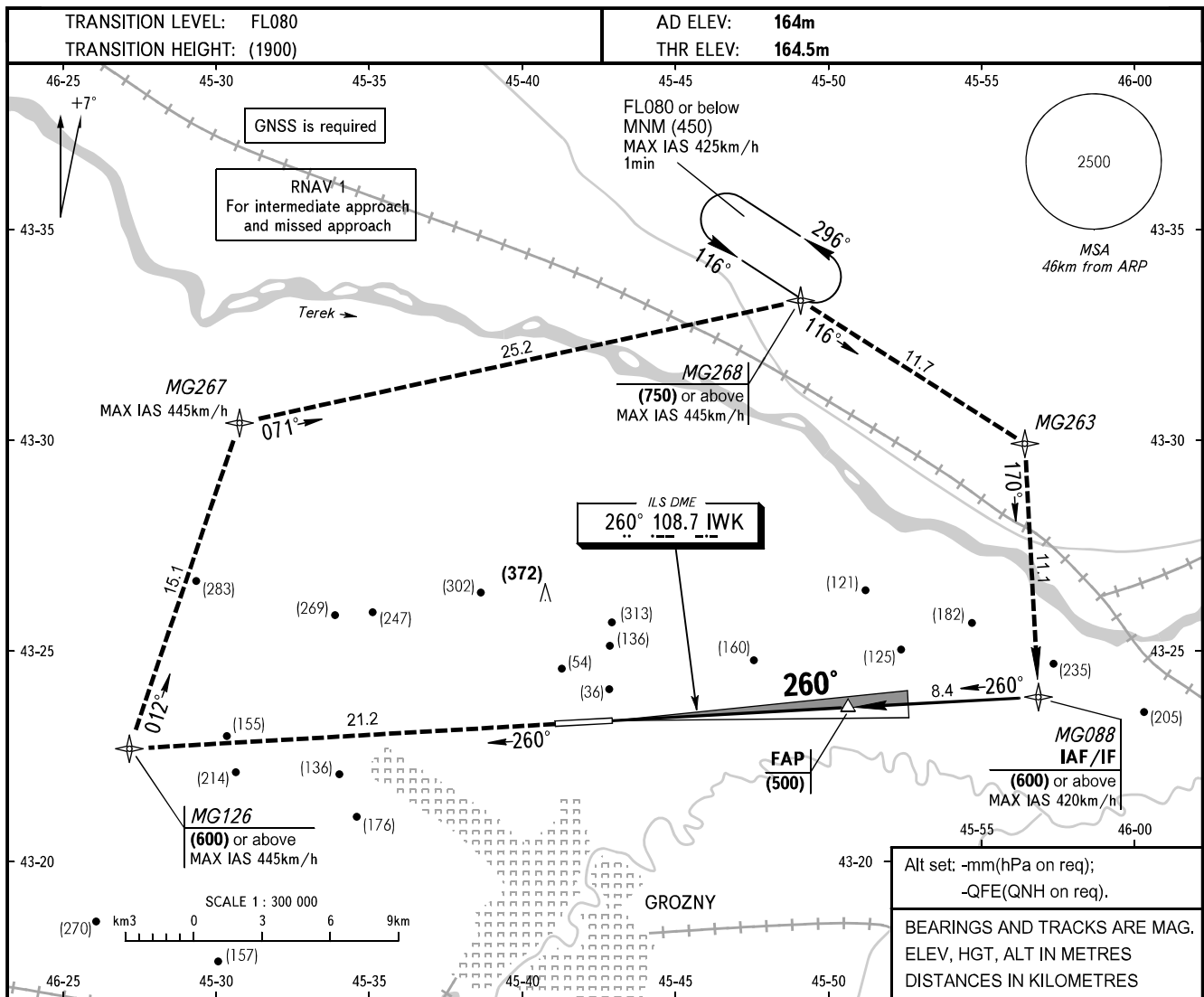


**INSTRUMENT
APPROACH
CHART - ICAO**

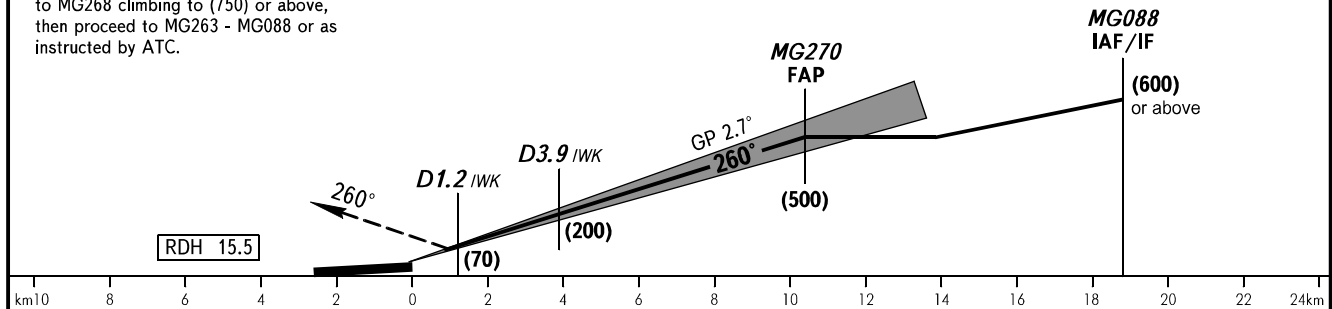
**GROZNY, RUSSIA
SEVERNY
ILS W CAT I RWY 26**

| | |
|-------|---------|
| TOWER | 120.200 |
| START | 119.000 |



MISSED APPROACH

Climb straight ahead to (600) or above to MG126, turn RIGHT to MG267, then to MG268 climbing to (750) or above, then proceed to MG263 - MG088 or as instructed by ATC.



| OCA(H) | | A | B | C | D | | | | | | |
|-----------------|--------------|----------|----------|----------|----------|-----|-----|-----|-----|-----|-----|
| Straight-in | CAT I | 225(60) | 225(60) | 225(60) | 225(60) | | | | | | |
| | Approach | | | | | | | | | | |
| Circling | | 400(235) | 595(430) | 660(495) | 660(495) | | | | | | |
| GROUND SPEED | | km/h | 150 | 180 | 210 | 240 | 270 | 300 | 330 | 360 | 390 |
| RATE OF DESCENT | | m/s | 2.0 | 2.4 | 2.7 | 3.1 | 3.5 | 3.9 | 4.3 | 4.7 | 5.1 |

WARNING
Visual manoeuvring south of the AD is PROHIBITED.