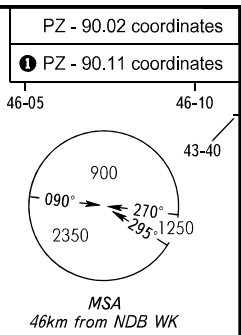


STANDARD DEPARTURE CHART  
INSTRUMENT (SID) - ICAO

TRANSITION  
HEIGHT : (1900)

GROZNY, RUSSIA  
SEVERNY  
RWY 26

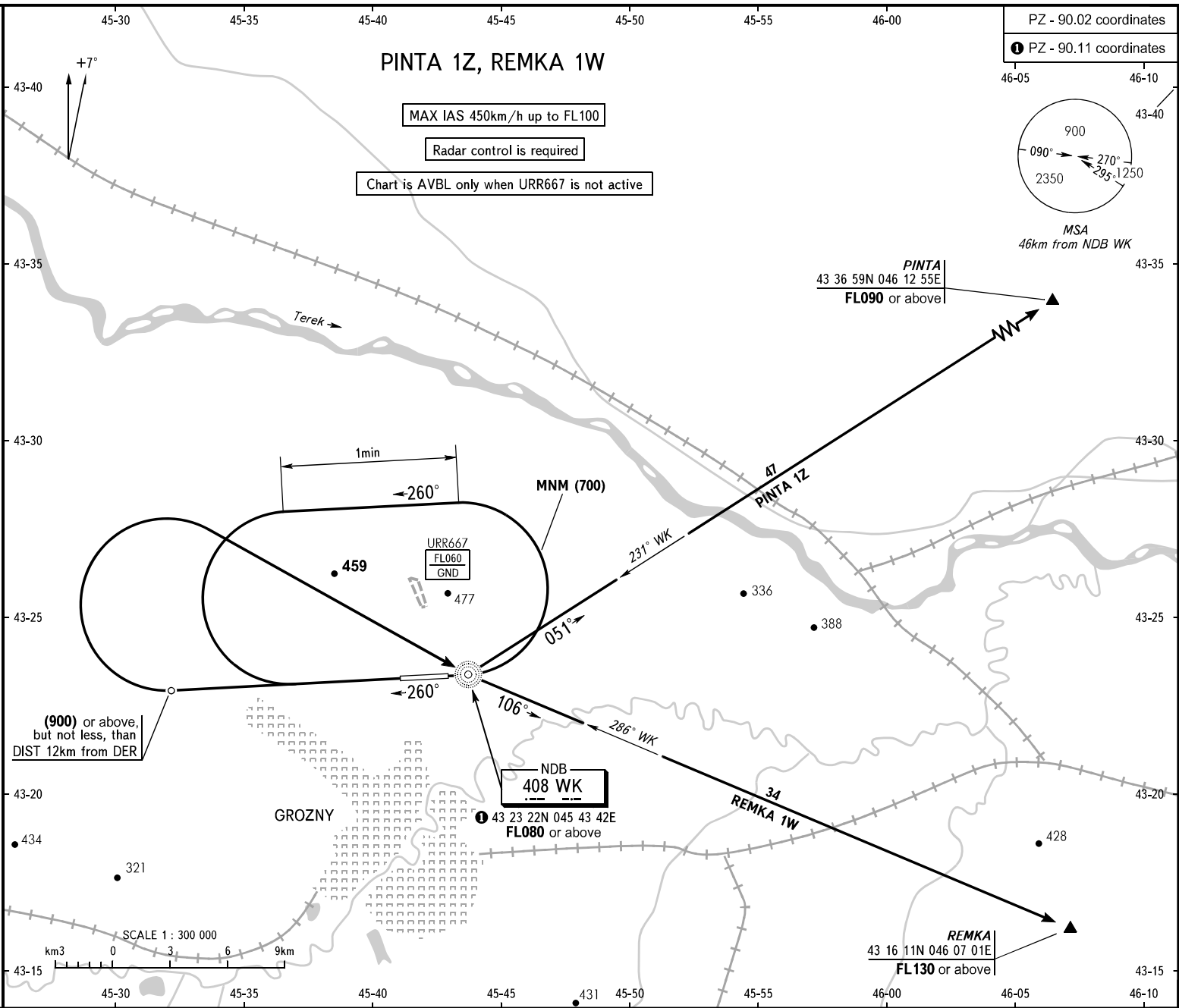


# PINTA 1Z, REMKA 1W

MAX IAS 450km/h up to FL100

Radar control is required

Chart is AVBL only when URR667 is not active



**WARNING**  
Close-in obstacles (trees, forest) are located to the right of the take-off heading at DIST 37.5-38.5m from DER with MAX ELEV (21).

(900) or above, but not less, than DIST 12km from DER

BEARINGS AND TRACKS ARE MAGNETIC  
ALTITUDES, HEIGHTS AND ELEVATIONS IN METRES  
DISTANCES IN KILOMETRES

Alt set: -QFE(QNH on req);  
-mm(hPa on req).

CHANGE: New chart