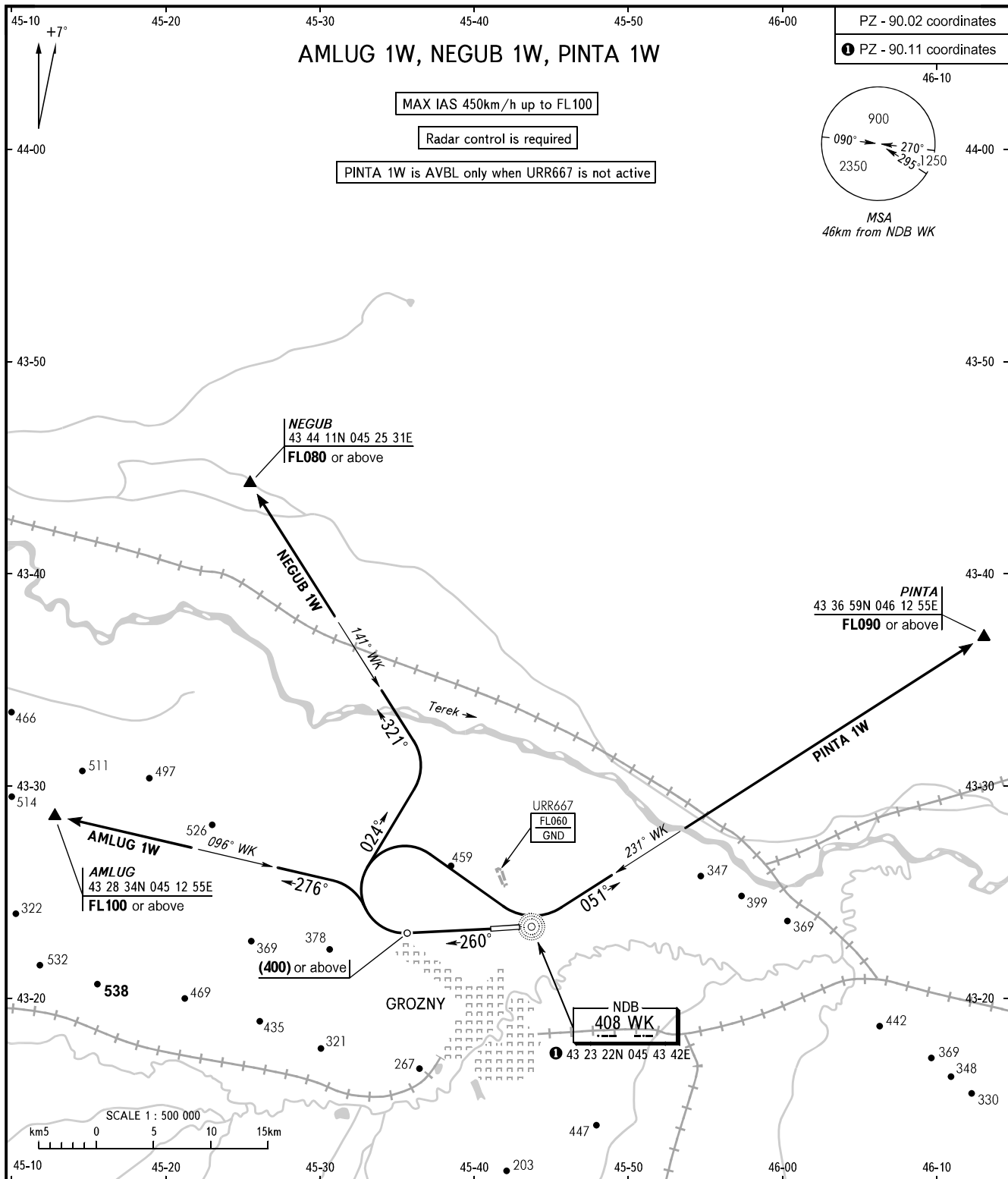


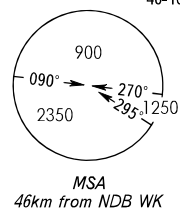
STANDARD DEPARTURE CHART  
INSTRUMENT (SID) - ICAO

TRANSITION  
HEIGHT : (1900)

GROZNY, RUSSIA  
SEVERNY  
RWY 26



PZ - 90.02 coordinates  
PZ - 90.11 coordinates



GROZNY TOWER 120.200  
GROZNY START 119.000

- WARNING:**
1. Turn before DER is PROHIBITED.
  2. The minimum climb gradients required due to the airspace structure only:
    - 4.2% up to (400) for SID NEGUB 1W, SID PINTA 1W;
    - 7.1% up to FL100 for SID AMLUG 1W.
  3. Close-in obstacles (trees, forest) are located to the right of the take-off heading at DIST 375-385m from DER with MAX ELEV (21).

BEARINGS AND TRACKS ARE MAGNETIC  
ALTITUDES, HEIGHTS AND ELEVATIONS IN METRES  
DISTANCES IN KILOMETRES

Alt set: -QFE(QNH on req);  
-mm(hPa on req).