

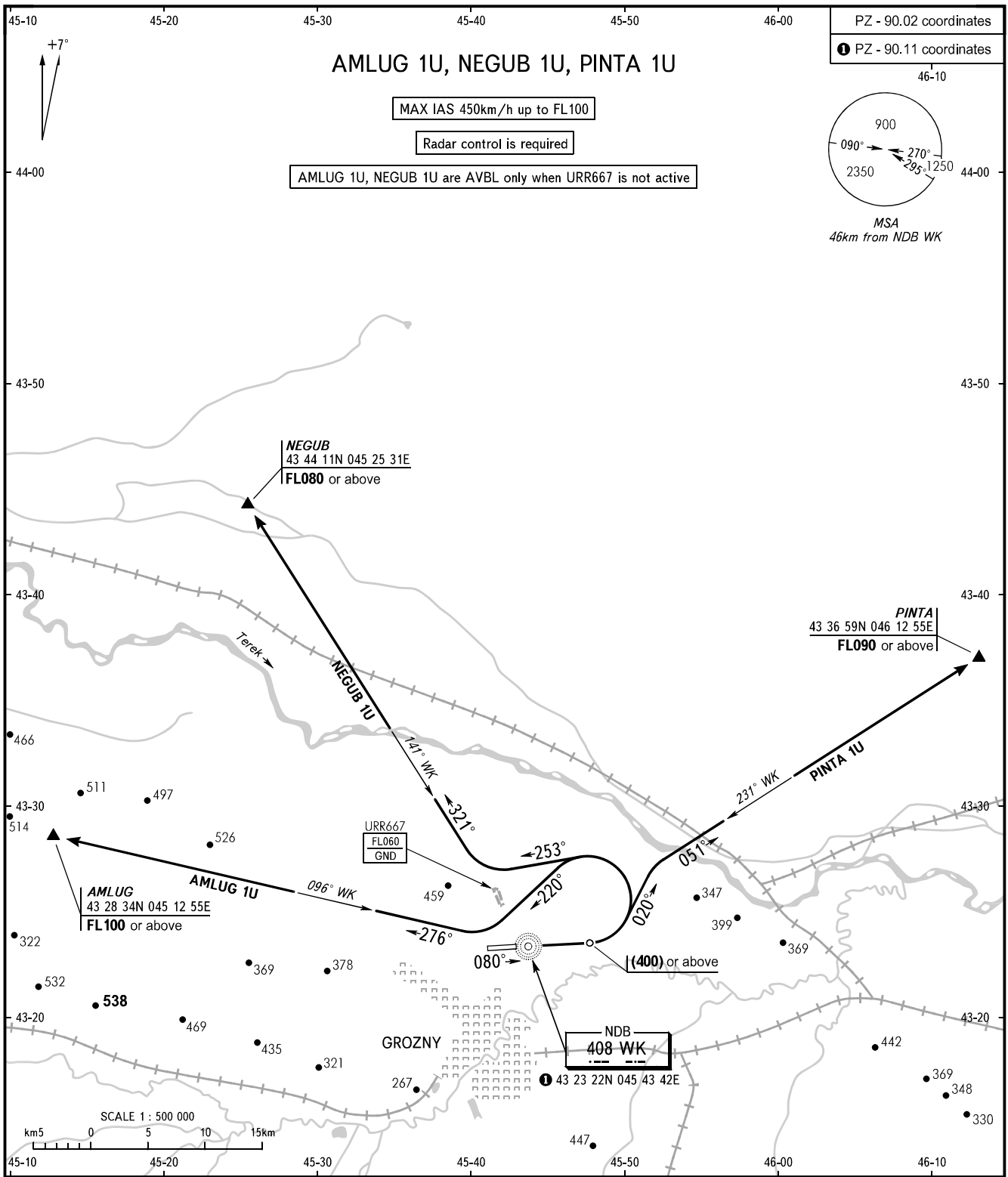
STANDARD DEPARTURE CHART
INSTRUMENT (SID) - ICAO

TRANSITION
HEIGHT : (1900)

GROZNY, RUSSIA

SEVERNY

RWY 08



GROZNY TOWER 120.200
GROZNY START 119.000

WARNING:

1. The minimum climb gradient required due to obstacles - 4.2% up to (250).
2. The minimum climb gradients required due to the airspace structure:
 - 4.3% up to FL100 for SID AMLUG 1U;
 - 5.3% up to FL090 for SID PINTA 1U.
3. Close-in obstacles (trees, forest) are located to the left of the take-off heading at DIST 684-689m from DER with MAX ELEV (30).

BEARINGS AND TRACKS ARE MAGNETIC
ALTITUDES, HEIGHTS AND ELEVATIONS IN METRES
DISTANCES IN KILOMETRES

Alt set: -QFE(QNH on req);
-mm(hPa on req).

CHANGE: New chart