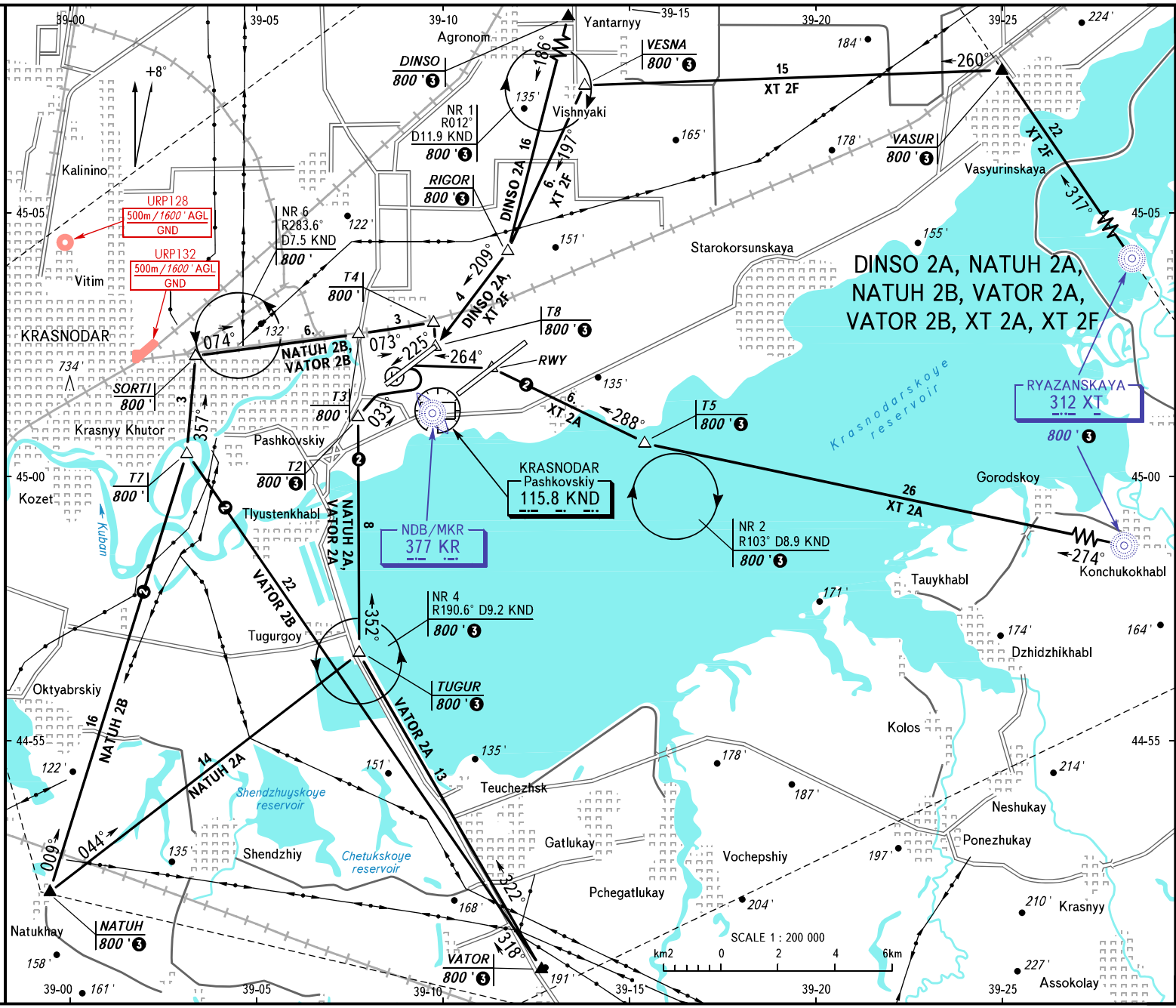


TRANSITION
ALTITUDE: 4000'



AREA
RADAR
TOWER
130.300
121.300
118.200

BEARINGS AND TRACKS ARE MAGNETIC
ALTITUDES AND ELEVATIONS IN FEET
DISTANCES IN KILOMETRES

Alt set: -QNH(QFE on req):
-hPa(mm on req).

1 TRANSITION LEVEL:

- FLO60 when QNH is 977 hPa (733mm mercury column) or above;
- FLO70 when QNH is 941 hPa (706mm mercury column) or above, but less than 977 hPa (733mm mercury column);
- 2 Cross RWY 23L take-off heading and centre by clearance of "Krasnodar-Radar" controller on 121.300 MHz.
- 3 1000' at NGT

NOTE

NATUH 2B, VATOR 2B are AVBL only in the day-time.