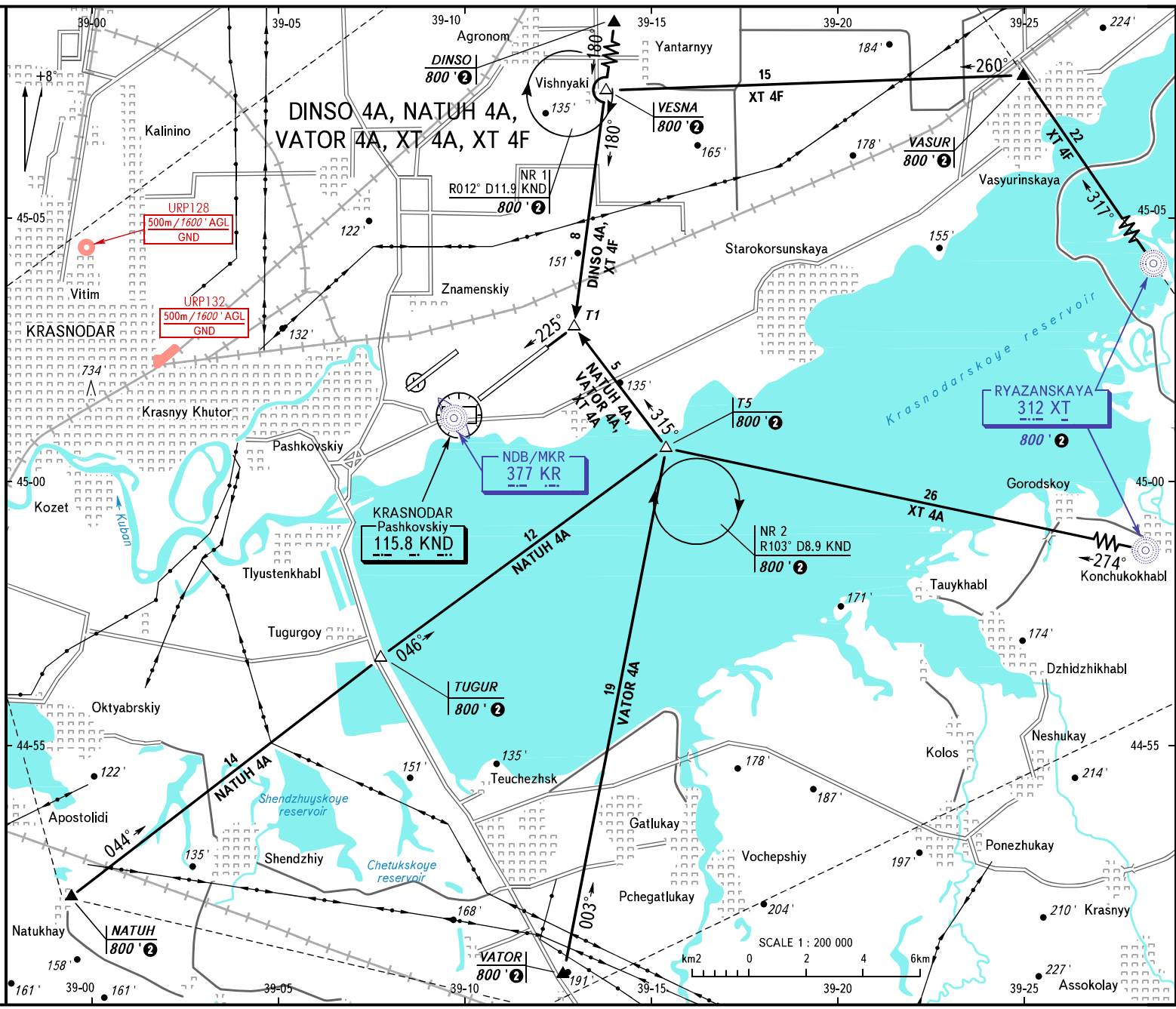


VFR  
ARRIVAL  
CHART

KRASNODAR, RUSSIA  
PASHKOVSKIY  
RWY 23L

TRANSITION  
LEVEL: **1**



**1** TRANSITION LEVEL:  
 - FLO60 when QNH is 977 hPa (733mm mercury column) or above;  
 - FLO70 when QNH is 941 hPa (706mm mercury column) or above,  
 but less than 977 hPa (733mm mercury column).  
**2** 1000' at NGT

BEARINGS AND TRACKS ARE MAGNETIC  
ALTITUDES AND ELEVATIONS IN FEET  
DISTANCES IN KILOMETRES

Alt set: QNH(QFE on req):  
-hPa(mm on req).

CHANGE: Heading