

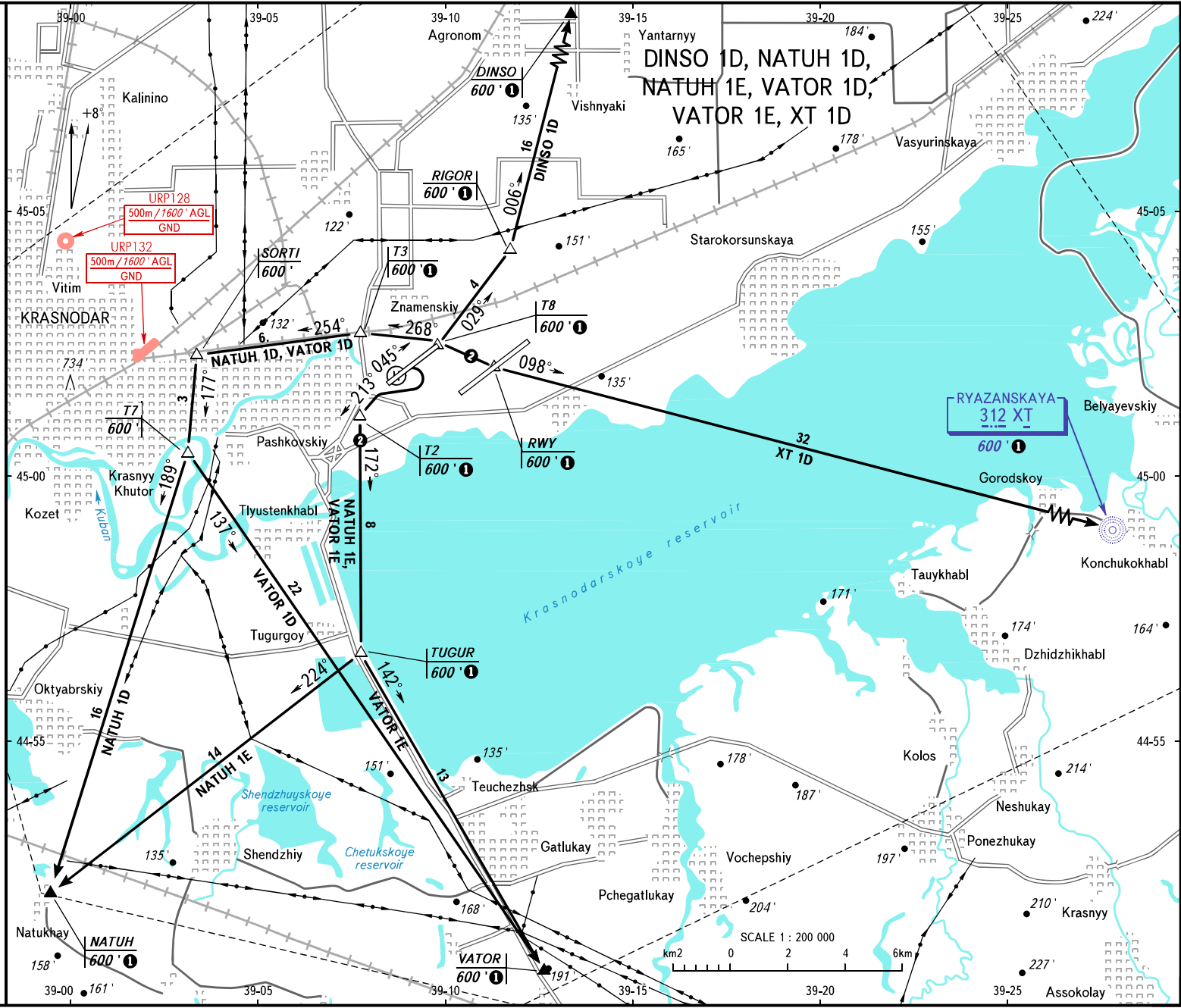
AIP  
RUSSIA

AD 2.1 URKK-209  
20 APR 23

VFR  
DEPARTURE  
CHART

TRANSITION  
ALTITUDE: 4000'

KRASNODAR, RUSSIA  
PASHKOVSKIY  
RWY 05L



TOWER	118,200
RADAR	121,300
AREA	130,300

BEARINGS AND TRACKS ARE MAGNETIC  
ALTITUDES AND ELEVATIONS IN FEET  
DISTANCES IN KILOMETRES

Alt set: -QN(H)(FE on req);  
-HPa(mm on req).

① 1000' at NGT  
② Cross RWY 05R landing heading by clearance of "Krasnodar-Radar" controller on 121.300 MHz.  
NOTE  
SIDS NATUH 1D, VATOR 1D are AVBL only  
In the day-time.

CHANGE: Heading

Federal Air Transport Agency

AIRAC AMDT 04/23