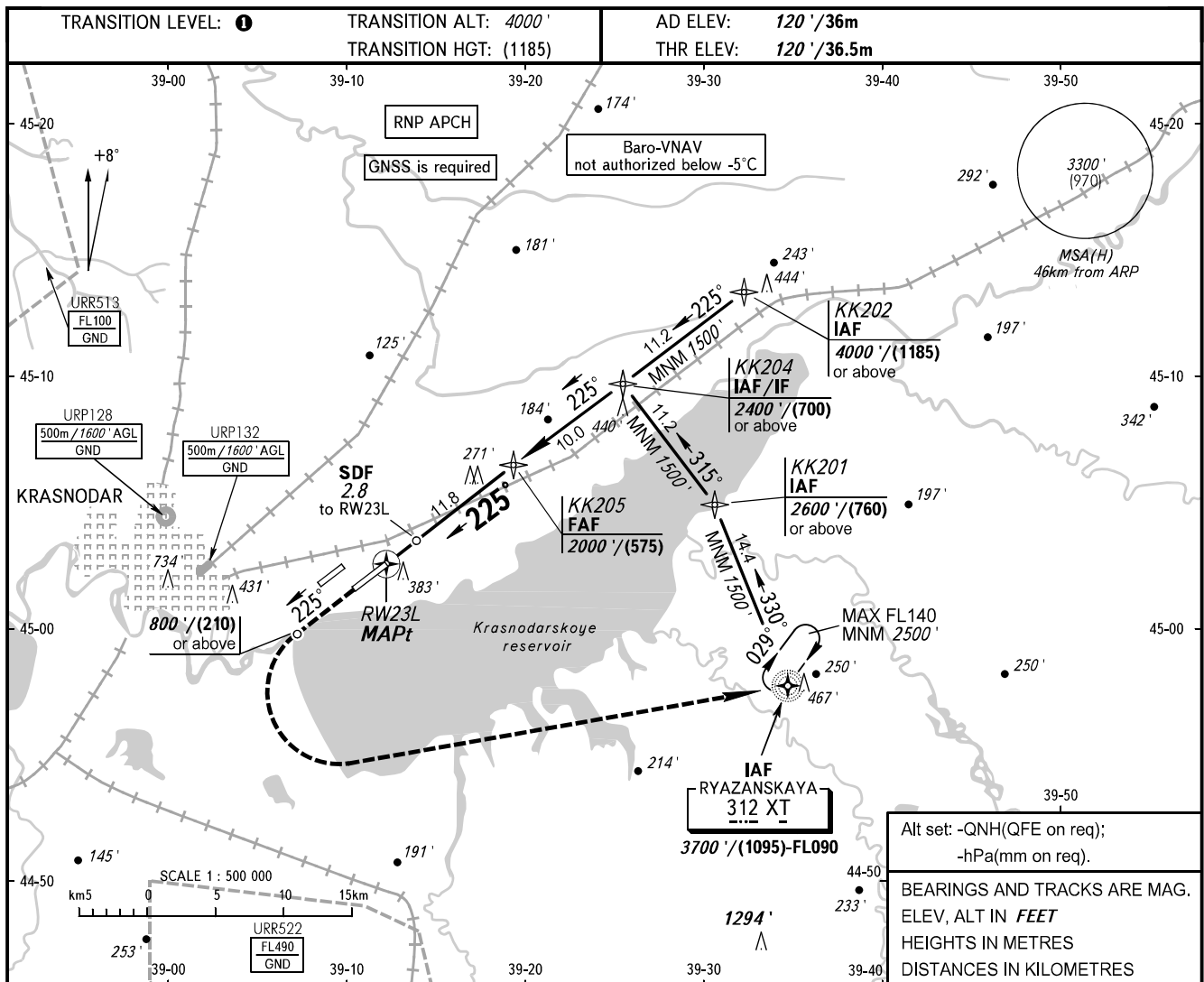


**INSTRUMENT
APPROACH
CHART - ICAO**

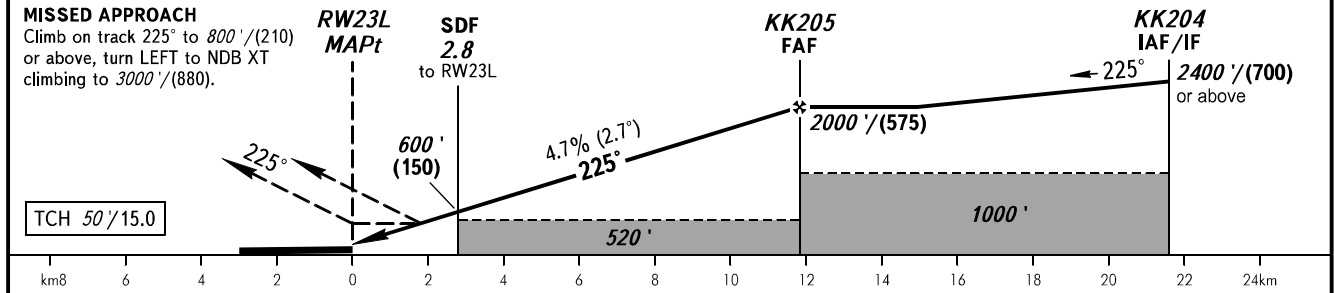
RADAR	121.300
TOWER	118.200

**KRASNODAR, RUSSIA
PASHKOVSKIY
RNP RWY 23L**



Alt set: -QNH(QFE on req);
-hPa(mm on req).
BEARINGS AND TRACKS ARE MAG.
ELEV, ALT IN FEET
HEIGHTS IN METRES
DISTANCES IN KILOMETRES

DIST to RW23L	2.0	4.0	6.0	8.0	10.0	11.8
ALTITUDE	480'	790'	1090'	1400'	1710'	2000'



OCA(H)		A	B	C	D
Straight-in	LNAV/VNAV	430' (320')	440' (330')	460' (350')	480' (370')
	LNAV	480' (360')	480' (360')	480' (360')	480' (360')
Approach					
Circling		680' (560')	680' (560')	780' (660')	830' (710')

1 TRANSITION LEVEL:
- FL060 when QNH is 977 hPa (733mm mercury column) or above;
- FL070 when QNH is 941 hPa (706mm mercury column) or above,
but less than 977 hPa (733mm mercury column).
NOTE:
1. MAPt at RW23L. Timing not authorized for defining MAPt.
2. Wind shear is expected.

GROUND SPEED	km/h	150	180	210	240	270	300	330	360	390
RATE OF DESCENT	m/s	2.0	2.4	2.7	3.1	3.5	3.9	4.3	4.7	5.1
	ft/min	385	463	540	617	694	771	848	925	1002