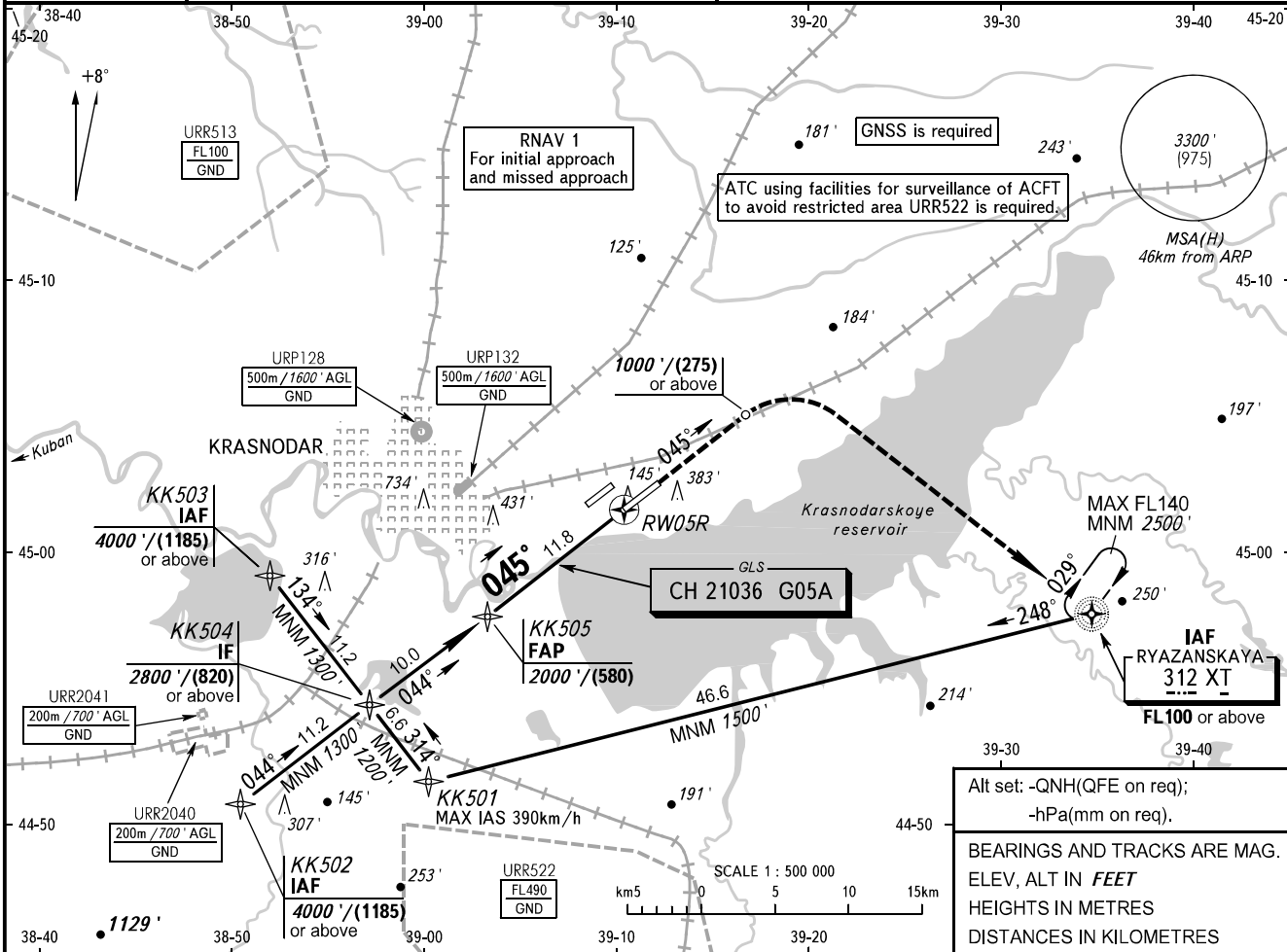


**INSTRUMENT
APPROACH
CHART - ICAO**

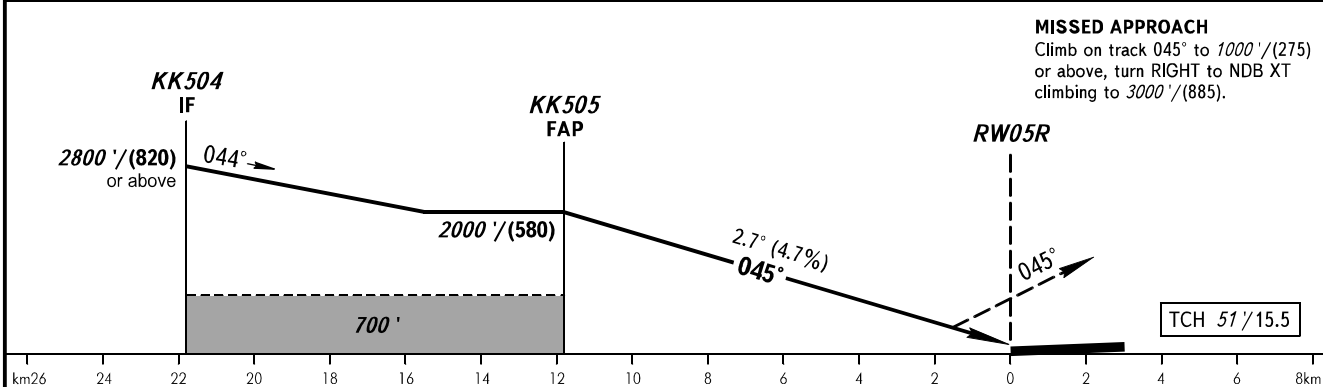
RADAR **121.300**
TOWER **118.200**

KRASNODAR, RUSSIA
PASHKOVSKIY
GLS RWY 05R

GBAS CH 21036 G05A **TRANSITION LEVEL:** ① **TRANSITION ALT:** 4000' **AD ELEV:** 120' / 36m
CH 21036 G05A **TRANSITION HGT:** (1185) **THR ELEV:** 113' / 34.5m



Alt set: -QNH(QFE on req);
-hPa(mm on req).
BEARINGS AND TRACKS ARE MAG.
ELEV, ALT IN FEET
HEIGHTS IN METRES
DISTANCES IN KILOMETRES



OCA(H)		A	B	C	D
Straight-in	CAT I	277' (164')	287' (174')	296' (184')	306' (194')
	Approach				
Circling		680' (560')	680' (560')	780' (660')	830' (710')

① **TRANSITION LEVEL:**
- FL060 when QNH is 977 hPa (733mm mercury column) or above;
- FL070 when QNH is 941 hPa (706mm mercury column) or above, but less than 977 hPa (733mm mercury column).
NOTE
Wind shear is expected.

GROUND SPEED	km/h	150	180	210	240	270	300	330	360	390
RATE OF DESCENT	m/s	2.0	2.4	2.7	3.1	3.5	3.9	4.3	4.7	5.1
	ft/min	385	463	540	617	694	771	848	925	1002

CHANGE: Heading, URR 513, IAF XT