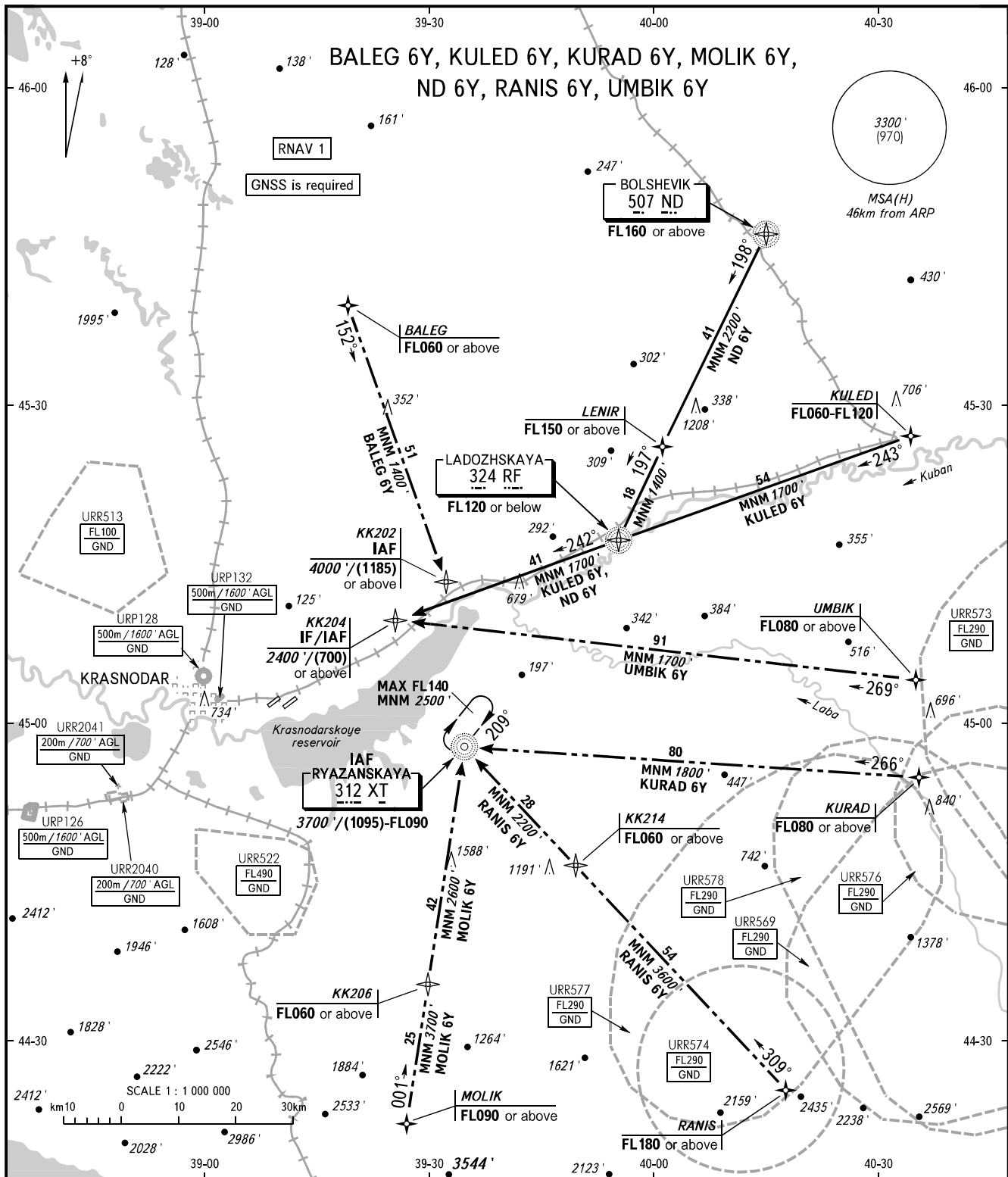


STANDARD ARRIVAL CHART  
INSTRUMENT (STAR) - ICAO

TRANSITION  
LEVEL: ①

KRASNODAR, RUSSIA  
PASHKOVSKIY  
RNAV RWY 23L



APPROACH	Sector WEST	127.700
	Sector EAST	129.600
TOWER		118.200
RADAR		121.300

① TRANSITION LEVEL:  
- FL060 when QNH is 977 hPa (733mm mercury column) or above;  
- FL070 when QNH is 941 hPa (706mm mercury column) or above,  
but less than 977 hPa (733mm mercury column).

**NOTE:**

- When URR577, URR578, URR576, URR573, URR569 are active, STAR KURAD 6Y is not AVBL.
- When URR574, URR577, URR569 are active, STAR RANIS 6Y is not AVBL.
- When URR573 is active, STAR UMBIK 6Y is not AVBL.

BEARINGS AND TRACKS ARE MAGNETIC ALTITUDES AND ELEVATIONS IN FEET HEIGHTS IN METRES DISTANCES IN KILOMETRES	Alt set: -QNH(QFE on req); -hPa(mm on req).
--	--

CHANGE: Heading, URR