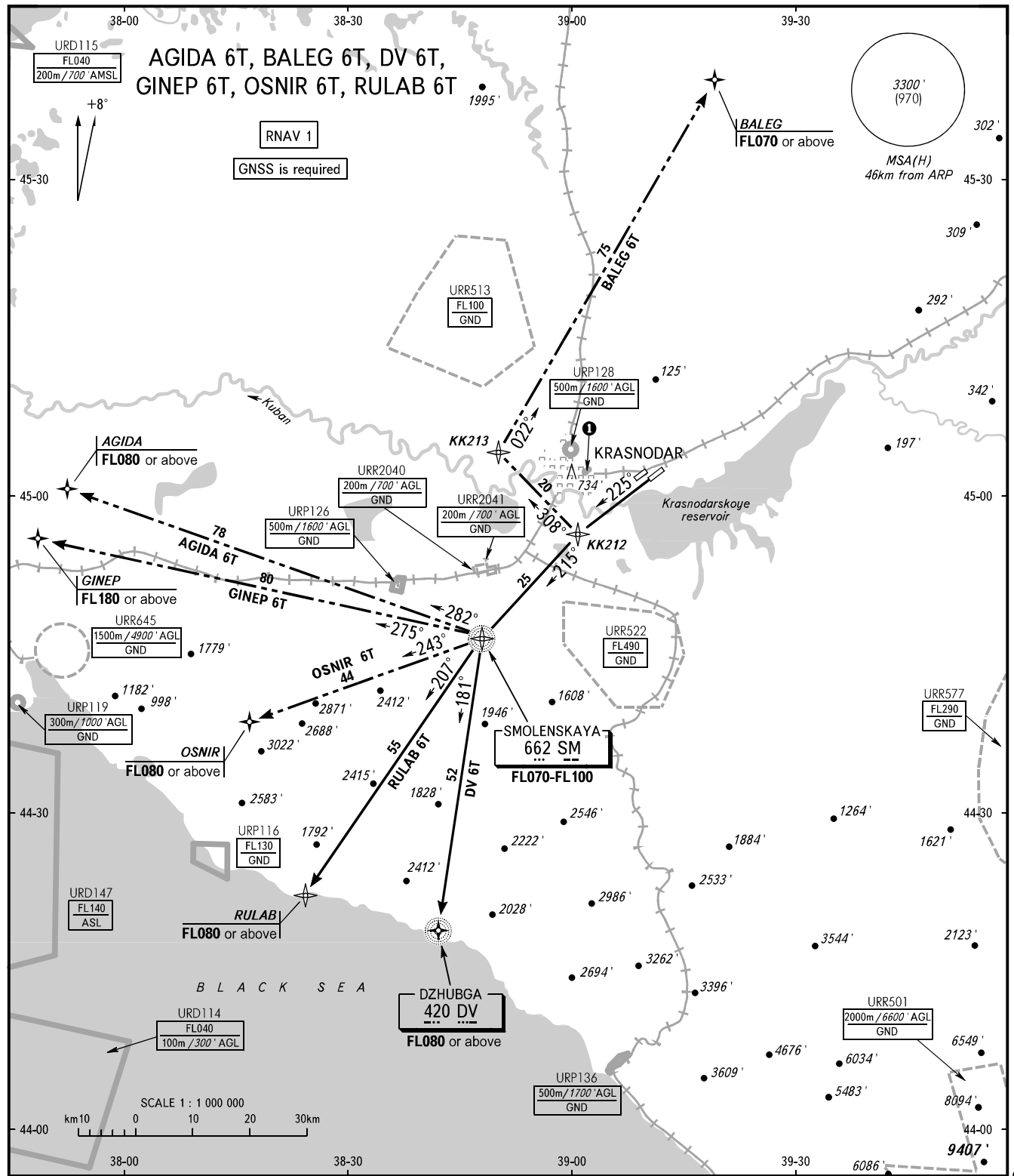


STANDARD DEPARTURE CHART
INSTRUMENT (SID) - ICAO

TRANSITION ALT: **4000'**
TRANSITION HGT: **(1185)**

KRASNODAR, RUSSIA
PASHKOVSKIY
RNAV RWY 23L



TOWER	118.200
RADAR	121.300
APPROACH Sector WEST	127.700
APPROACH Sector EAST	129.600

BEARINGS AND TRACKS ARE MAGNETIC	Alt set: -QNH(QFE on req);
ALTITUDES AND ELEVATIONS IN FEET	-hPa(mm on req).
HEIGHTS IN METRES	
DISTANCES IN KILOMETRES	

WARNING
The minimum climb gradients (required due to the airspace structure only) are as follows:
- 5.2% up to FL070 for SIDs AGIDA 6T, DV 6T, OSNIR 6T, RULAB 6T;
- 5.2% up to FL070, then 4.2% up to FL180 for SID GINEP 6T.

URP132
500m/1600' AGL
GND

CHANGE: Heading, URP, URR, URD