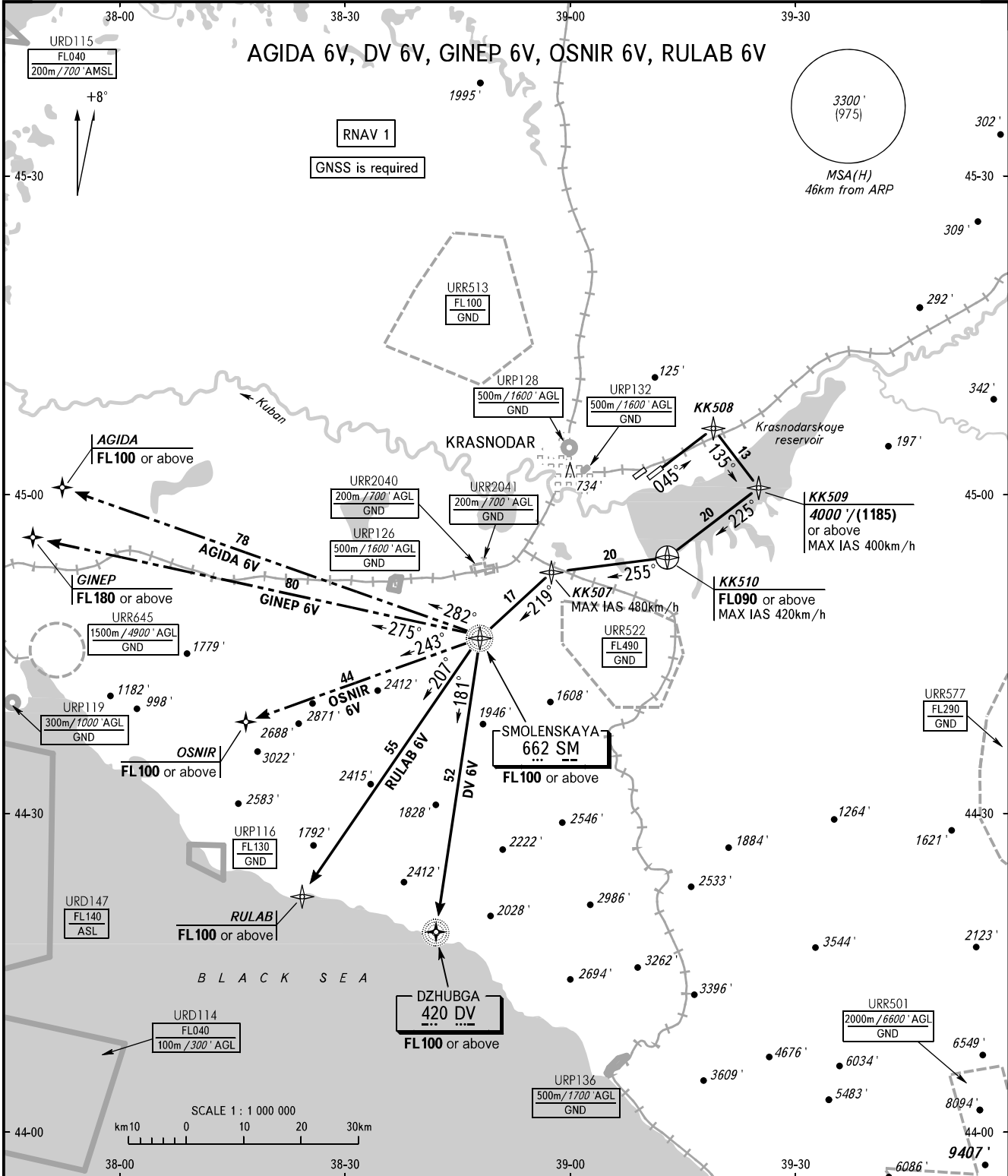


STANDARD DEPARTURE CHART
INSTRUMENT (SID) - ICAO

TRANSITION ALT: **4000'**
TRANSITION HGT: **(1185)**

KRASNODAR, RUSSIA
PASHKOVSKIY
RNAV RWY 05R



TOWER **118.200**
RADAR **121.300**
APPROACH Sector WEST **127.700**
Sector EAST **129.600**

WARNING
The minimum climb gradient (required due to the airspace structure only) is 7.0% up to FL090 for all SID.

BEARINGS AND TRACKS ARE MAGNETIC
ALTITUDES AND ELEVATIONS IN FEET
HEIGHTS IN METRES
DISTANCES IN KILOMETRES

Alt set: -QNH(QFE on req);
-hPa(mm on req).

CHANGE: Heading, URP, URR, URD