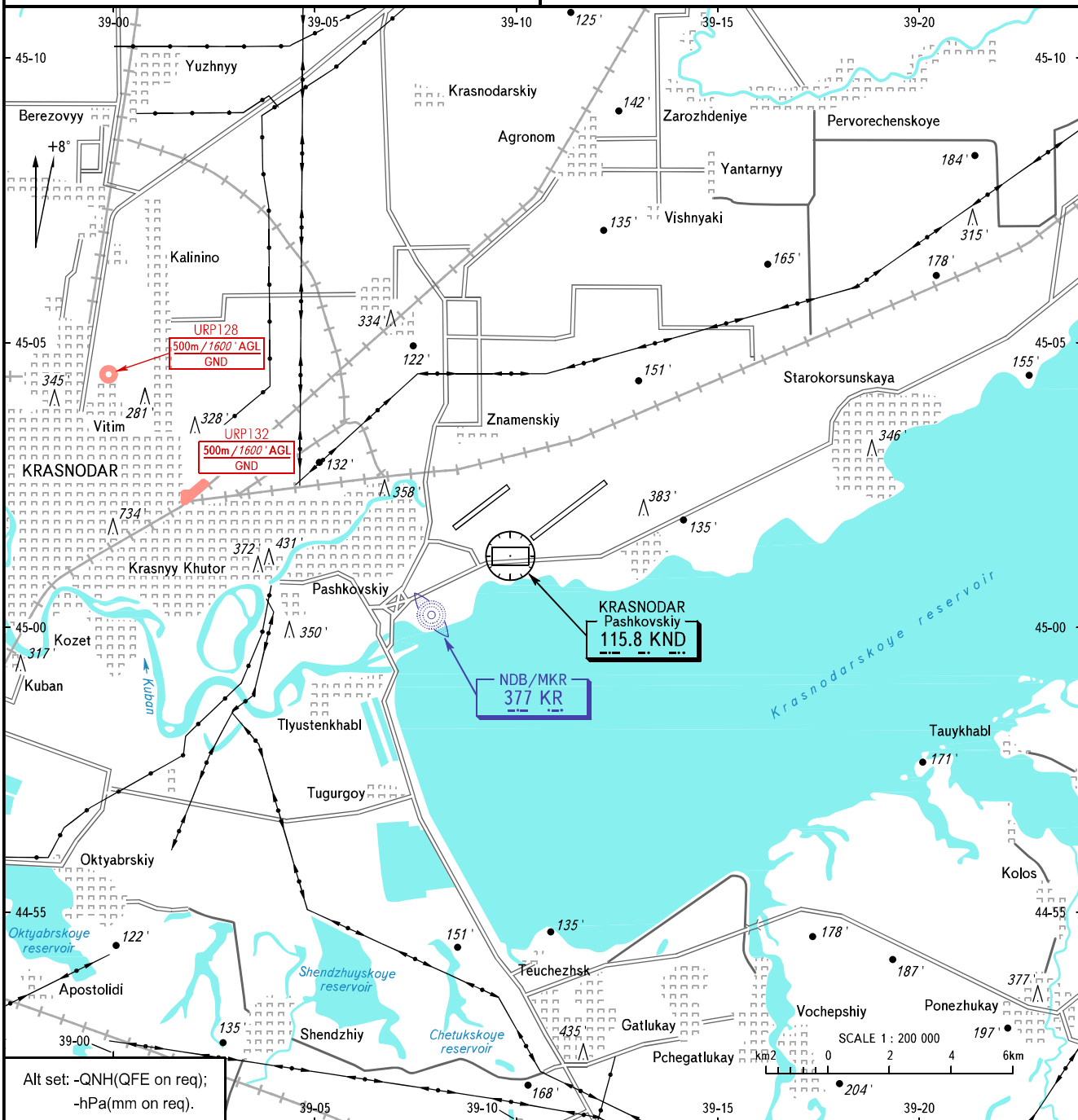


VISUAL  
APPROACH  
CHART - ICAO

TOWER	118.200
RADAR	121.300

KRASNODAR, RUSSIA  
PASHKOVSKIY  
RWY 05R/23L

TRANSITION LEVEL: **1** AD ELEV: 120' / 36m



**1** TRANSITION LEVEL:  
- FL060 when QNH is 977 hPa (733mm mercury column) or above;  
- FL070 when QNH is 941 hPa (706mm mercury column) or above,  
but less than 977 hPa (733mm mercury column).

CHANGE: Heading