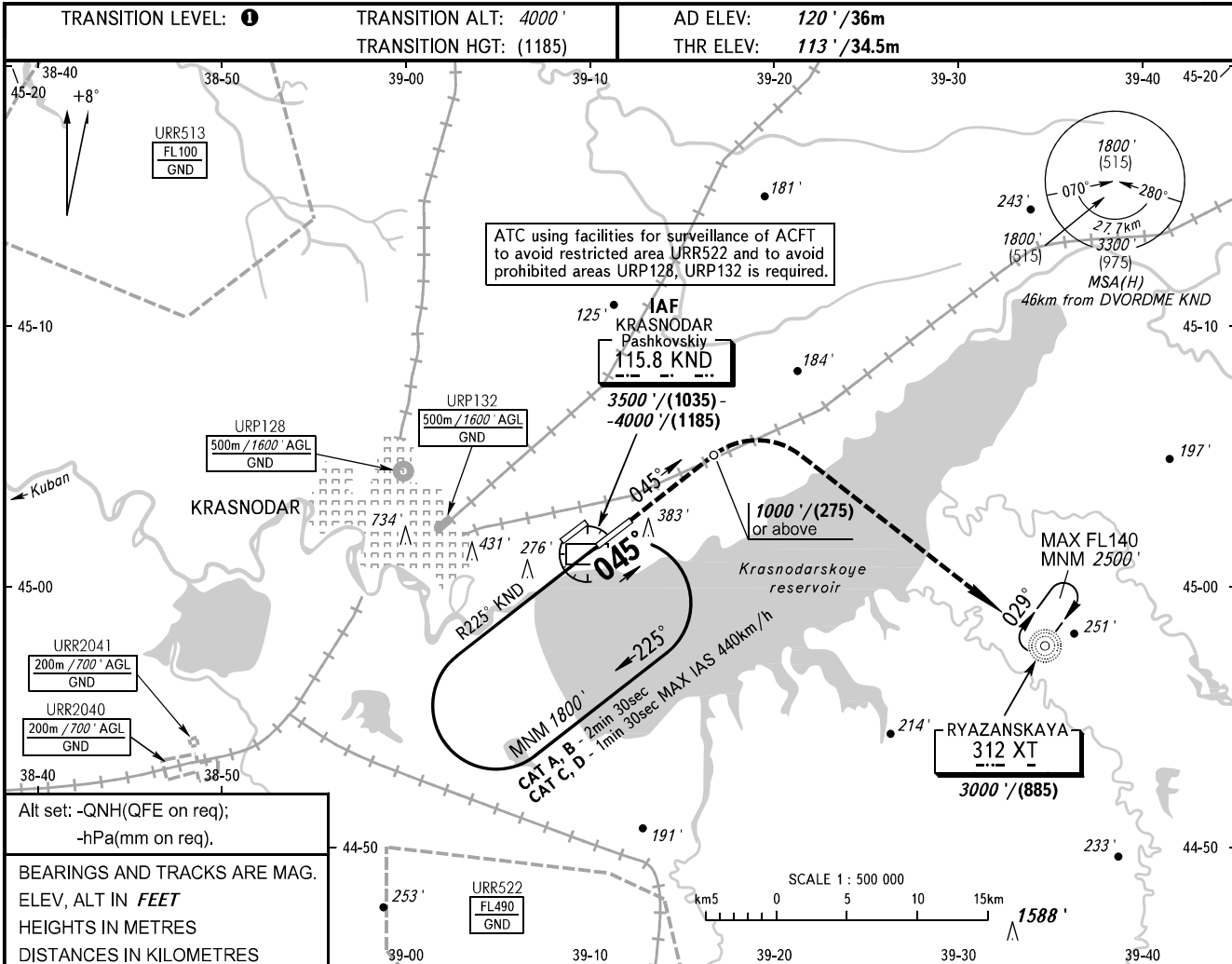


**INSTRUMENT  
APPROACH  
CHART - ICAO**

RADAR	121.300
TOWER	118.200

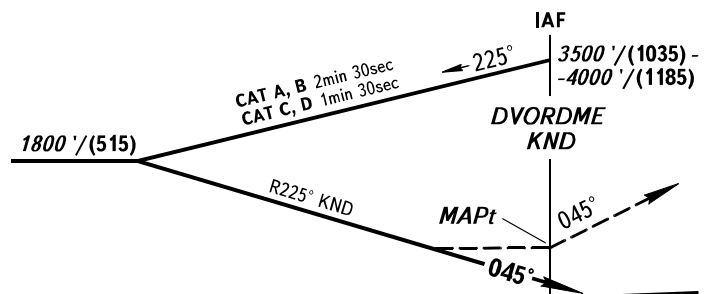
**KRASNODAR, RUSSIA  
PASHKOVSKIY  
DVOR X RWY 05R**



Alt set: -QNH(QFE on req);  
-hPa(mm on req).

BEARINGS AND TRACKS ARE MAG.  
ELEV, ALT IN FEET  
HEIGHTS IN METRES  
DISTANCES IN KILOMETRES

**MISSED APPROACH**  
Climb on track 045° to 1000'/(275) or above, turn RIGHT to NDB XT climbing to 3000'/(885).



OCA(H)		A	B	C	D
Straight-in		580' (460')	580' (460')	580' (460')	580' (460')
	Approach				
Circling		680' (560')	680' (560')	780' (660')	830' (710')

**1** TRANSITION LEVEL:  
- FL060 when QNH is 977 hPa (733mm mercury column) or above;  
- FL070 when QNH is 941 hPa (706mm mercury column) or above,  
but less than 977 hPa (733mm mercury column).

**NOTE:**  
1. MAPt at DVORDME KND. Timing not authorized for defining MAPt.  
2. Turn before passing MAPt is PROHIBITED.  
3. Wind shear is expected.

CHANGE: Heading, URR513