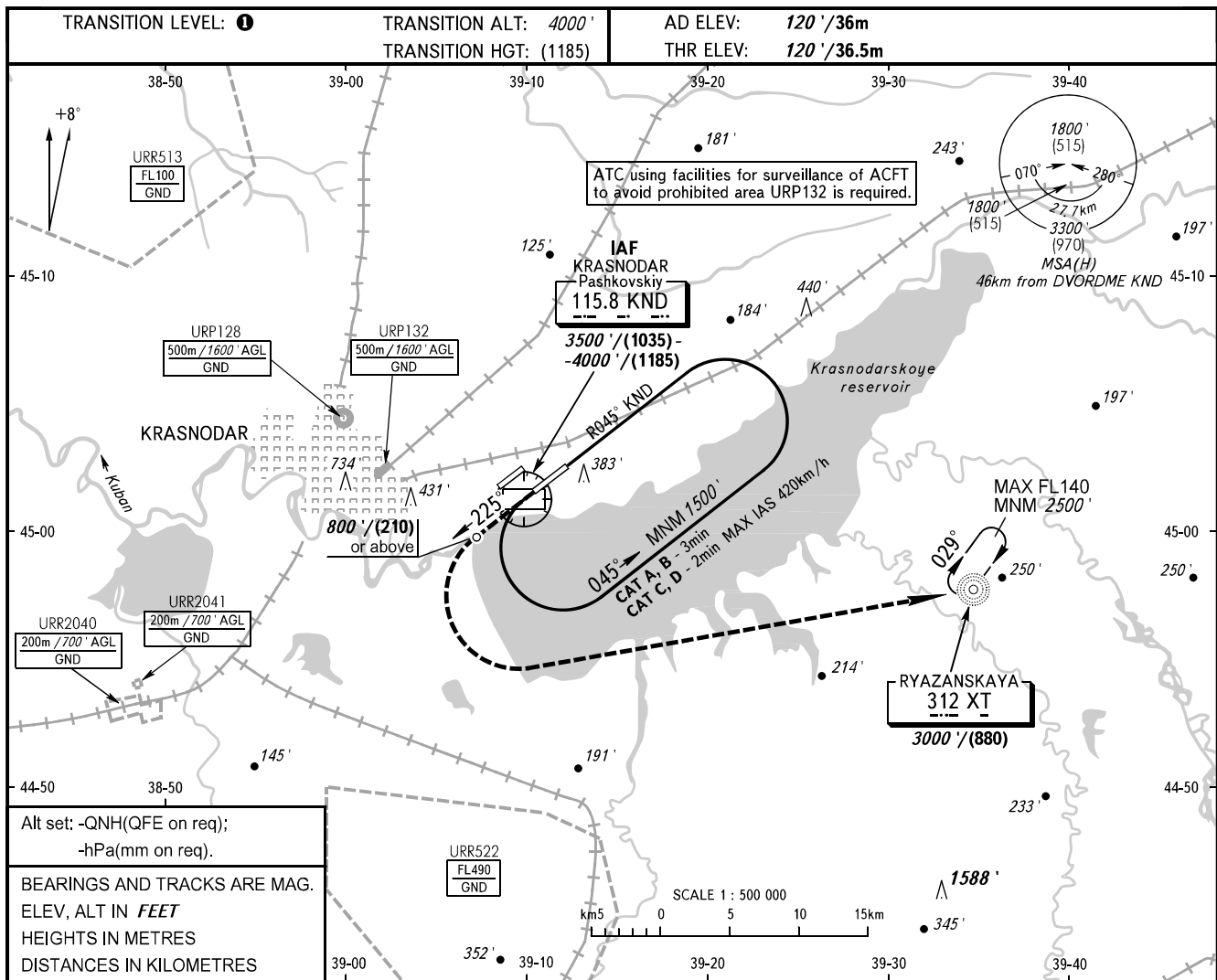


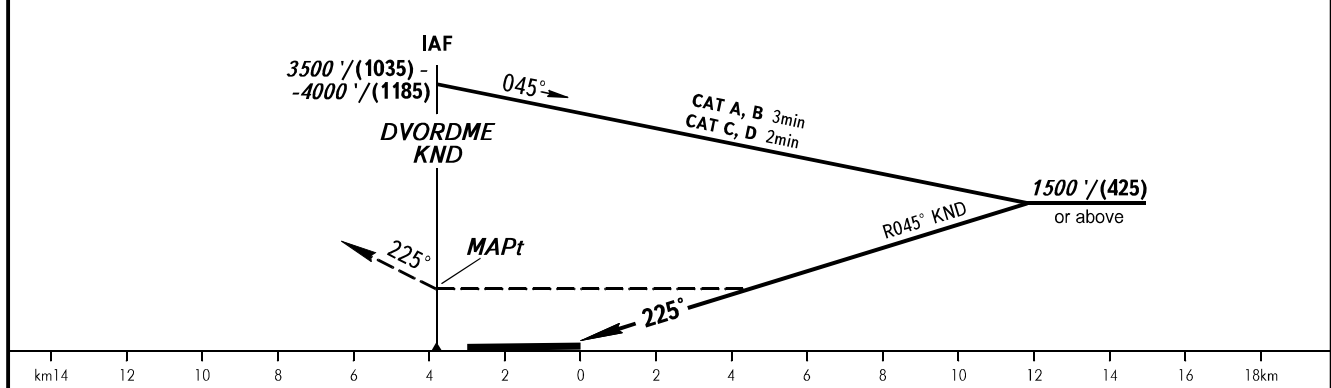
**INSTRUMENT
APPROACH
CHART - ICAO**

RADAR	121.300
TOWER	118.200

**KRASNODAR, RUSSIA
PASHKOVSKIY
DVOR W RWY 23L**



MISSED APPROACH
Climb on track 225° to 800'/(210) or above, turn LEFT to NDB XT climbing to 3000'/(880).



OCA(H)		A	B	C	D
Straight-in	Approach	740' (620')	740' (620')	740' (620')	740' (620')
	Approach				
Circling		740' (620')	740' (620')	780' (660')	830' (710')

① TRANSITION LEVEL:
- FL060 when QNH is 977 hPa (733mm mercury column) or above;
- FL070 when QNH is 941 hPa (706mm mercury column) or above, but less than 977 hPa (733mm mercury column).

NOTE:
1. MAPt at DVORDME KND. Timing not authorized for defining MAPt.
2. Turn before passing MAPt is PROHIBITED.
3. Wind shear is expected.