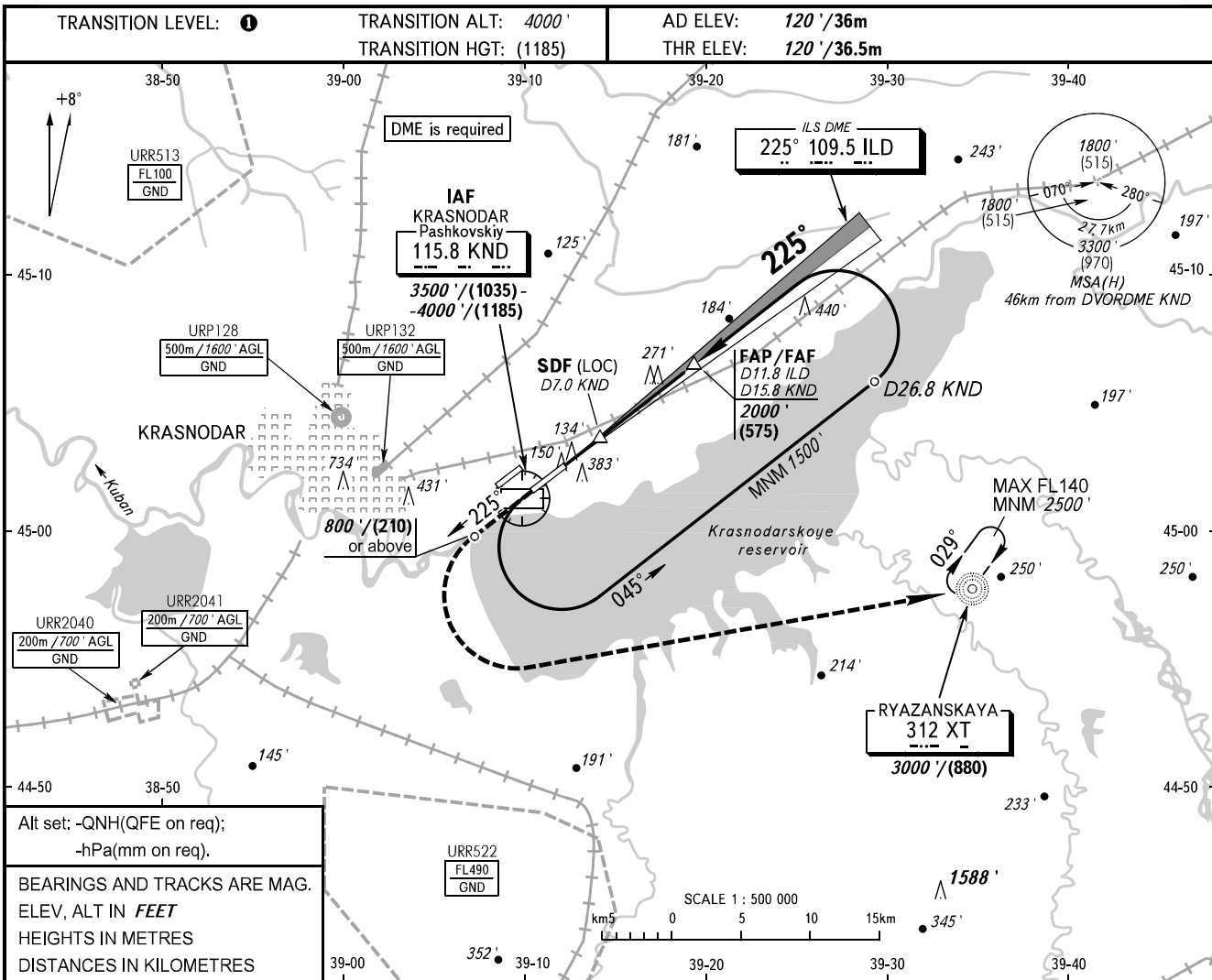


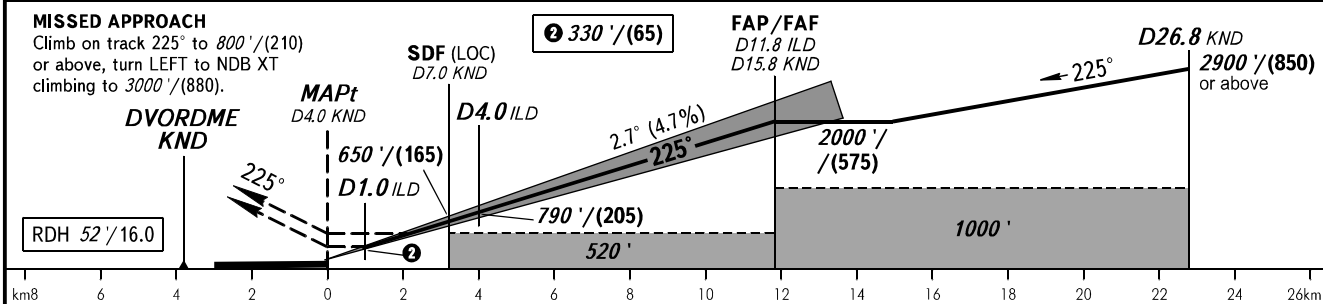
**INSTRUMENT
APPROACH
CHART - ICAO**

RADAR **121.300**
TOWER **118.200**

KRASNODAR, RUSSIA
PASHKOVSKIY
ILS W CAT I/II, LOC W RWY 23L



DME KND	8.0	10.0	12.0	14.0	15.8
ALTITUDE	800'	1110'	1420'	1730'	2000'



OCA(H)		A	B	C	D						
Straight-in	CAT I	281' (162')	291' (171')	301' (181')	311' (191')						
	CAT II	173' (55')	183' (65')	196' (78')	210' (92')						
Approach	LOC With SDF	470' (350')	470' (350')	470' (350')	470' (350')						
	LOC WO SDF	520' (400')	520' (400')	520' (400')	520' (400')						
Circling		680' (560')	680' (560')	780' (660')	830' (710')						
GROUND SPEED		km/h	150	180	210	240	270	300	330	360	390
RATE OF DESCENT		m/s	2.0	2.4	2.7	3.1	3.5	3.9	4.3	4.7	5.1
		ft/min	385	463	540	617	694	771	848	925	1002

1 TRANSITION LEVEL:
- FL060 when QNH is 977 hPa (733mm mercury column) or above;
- FL070 when QNH is 941 hPa (706mm mercury column) or above,
but less than 977 hPa (733mm mercury column).

NOTE:
1. ILS DME ILS reads zero at RWY 23L THR.
2. Timing not authorized for defining MAPt.
3. Turn before passing MAPt is PROHIBITED.
4. Wind shear is expected.

CHANGE: Heading, URR