

**INSTRUMENT
APPROACH
CHART - ICAO**

**KRASNODAR, RUSSIA
PASHKOVSKIY
ILS Y CAT I/II, LOC Y RWY 23L**

RADAR 121.300
TOWER 118.200

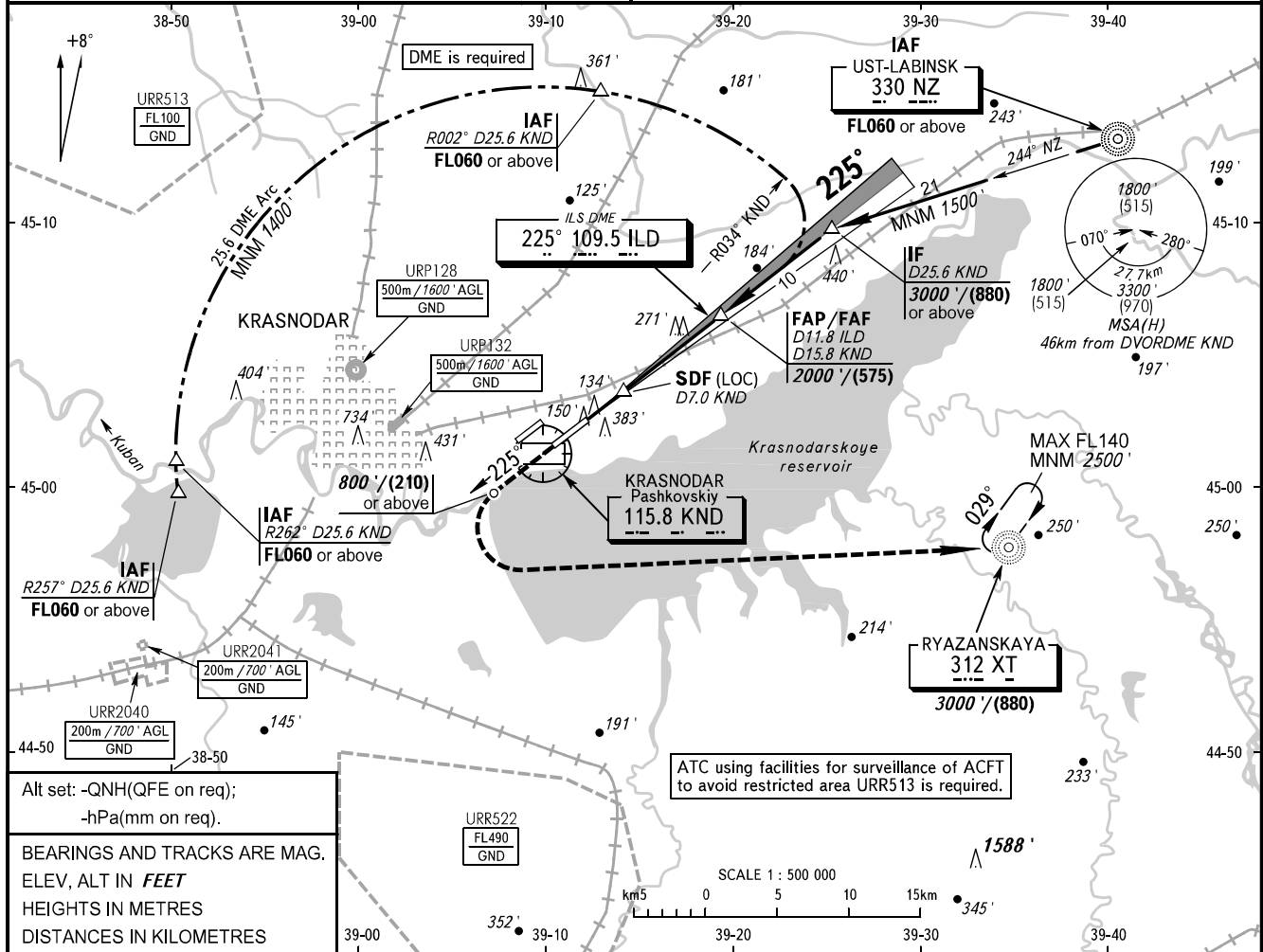
TRANSITION LEVEL: ①

TRANSITION ALT: 4000'

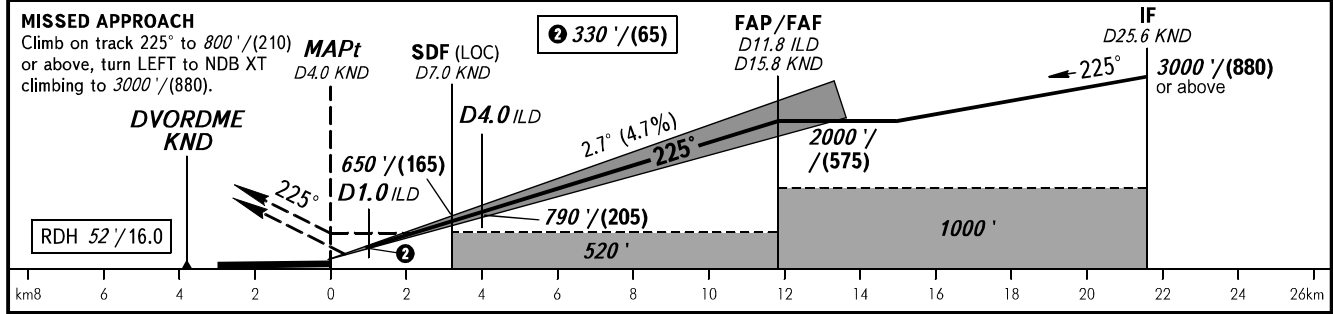
AD ELEV: 120' / 36m

TRANSITION HGT: (1185)

THR ELEV: 120' / 36.5m



DME KND	8.0	10.0	12.0	14.0	15.8
ALTITUDE	800'	1110'	1420'	1730'	2000'



OCA(H)		A	B	C	D	① TRANSITION LEVEL:					
Straight-in	CAT I	281' (162')	291' (171')	301' (181')	311' (191')	- FL060 when QNH is 977 hPa (733mm mercury column) or above;					
	CAT II	173' (55')	183' (65')	196' (78')	210' (92')	- FL070 when QNH is 941 hPa (706mm mercury column) or above, but less than 977 hPa (733mm mercury column).					
Approach	LOC With SDF	470' (350')	470' (350')	470' (350')	470' (350')	NOTE:					
	LOC WO SDF	520' (400')	520' (400')	520' (400')	520' (400')	1. ILS DME ILS DME reads zero at RWY 23L THR.					
Circling		680' (560')	680' (560')	780' (660')	830' (710')	2. Timing not authorized for defining MAPt.					
						3. Turn before passing MAPt is PROHIBITED.					
GROUND SPEED	km/h		150	180	210	240	270	300	330	360	390
	m/s		2.0	2.4	2.7	3.1	3.5	3.9	4.3	4.7	5.1
RATE OF DESCENT	ft/min		385	463	540	617	694	771	848	925	1002