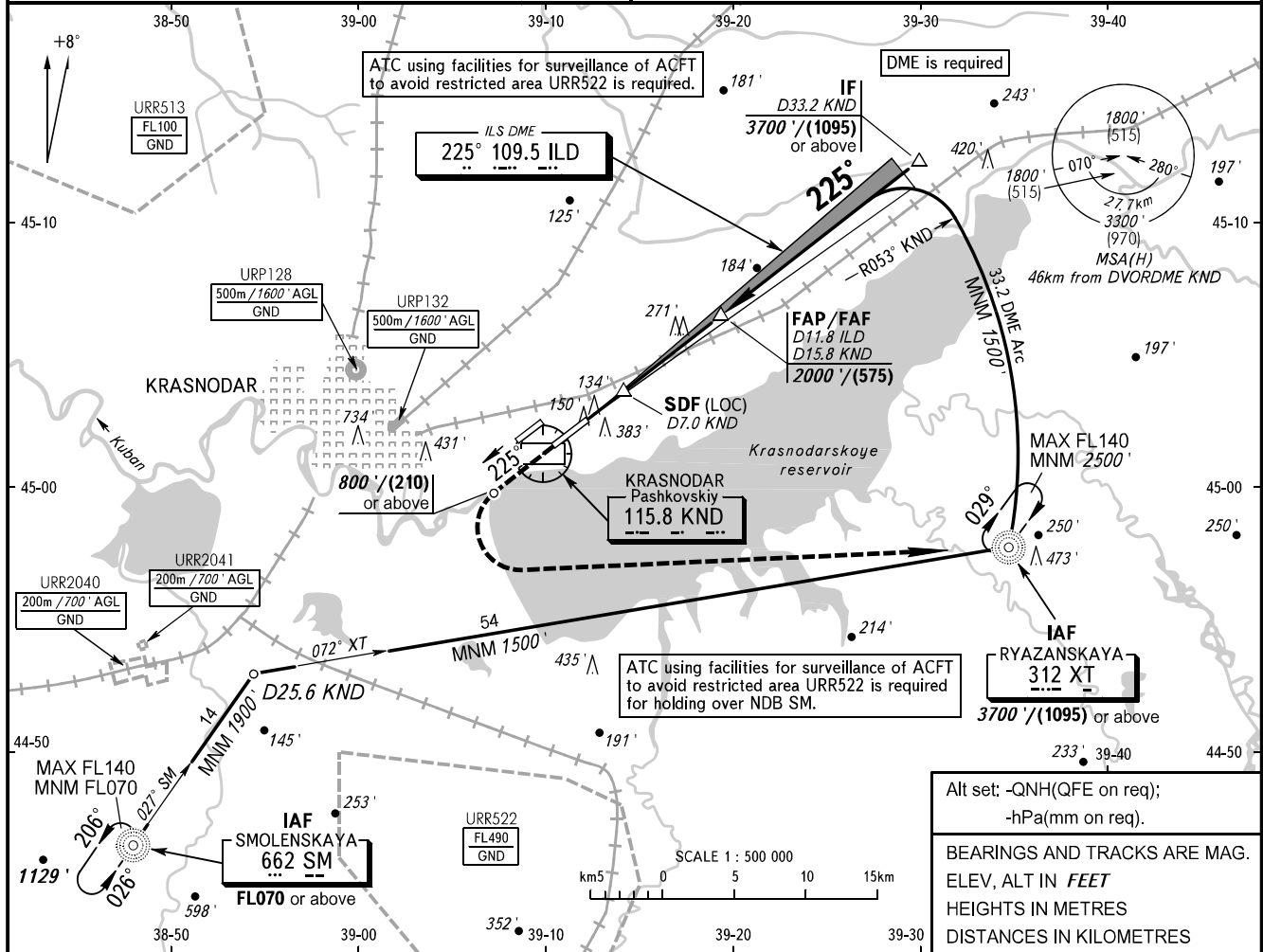


**INSTRUMENT  
APPROACH  
CHART - ICAO**

**KRASNODAR, RUSSIA  
PASHKOVSKIY  
ILS X CAT I/II, LOC X RWY 23L**

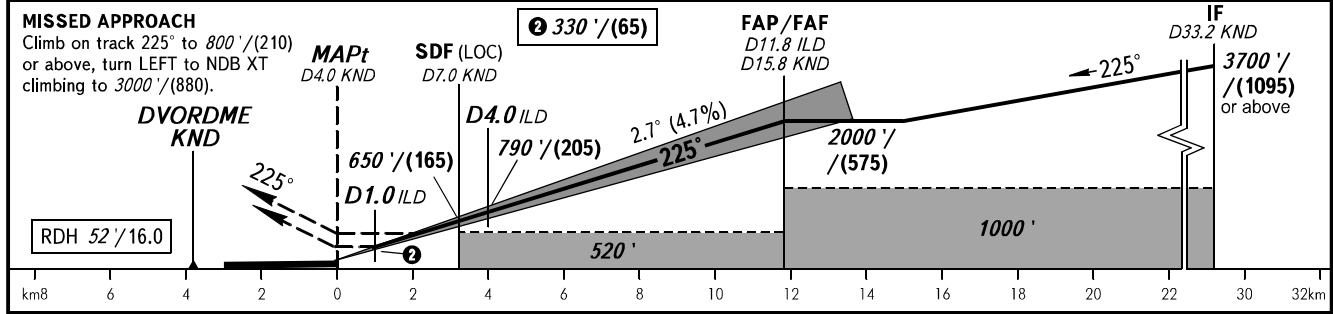
RADAR 121.300  
TOWER 118.200

TRANSITION LEVEL: **01**      TRANSITION ALT: 4000'      AD ELEV: 120' / 36m  
TRANSITION HGT: (1185)      THR ELEV: 120' / 36.5m



Alt set: -QNH(QFE on req);  
-hPa(mm on req).  
BEARINGS AND TRACKS ARE MAG.  
ELEV, ALT IN FEET  
HEIGHTS IN METRES  
DISTANCES IN KILOMETRES

DME KND	8.0	10.0	12.0	14.0	15.8
ALTITUDE	800'	1110'	1420'	1730'	2000'



OCA(H)		A	B	C	D
Straight-in	CAT I	281' (162')	291' (171')	301' (181')	311' (191')
	CAT II	173' (55')	183' (65')	196' (78')	210' (92')
Approach	LOC With SDF	470' (350')	470' (350')	470' (350')	470' (350')
	LOC WO SDF	520' (400')	520' (400')	520' (400')	520' (400')
Circling		680' (560')	680' (560')	780' (660')	830' (710')

**01** TRANSITION LEVEL:  
- FL060 when QNH is 977 hPa (733mm mercury column) or above;  
- FL070 when QNH is 941 hPa (706mm mercury column) or above,  
but less than 977 hPa (733mm mercury column).  
**NOTE:**  
1. ILS DME ILD reads zero at RWY 23L THR.  
2. Timing not authorized for defining MAPt.  
3. Turn before passing MAPt is PROHIBITED.  
4. Wind shear is expected.

GROUND SPEED	km/h	150	180	210	240	270	300	330	360	390
	m/s	2.0	2.4	2.7	3.1	3.5	3.9	4.3	4.7	5.1
RATE OF DESCENT	ft/min	385	463	540	617	694	771	848	925	1002