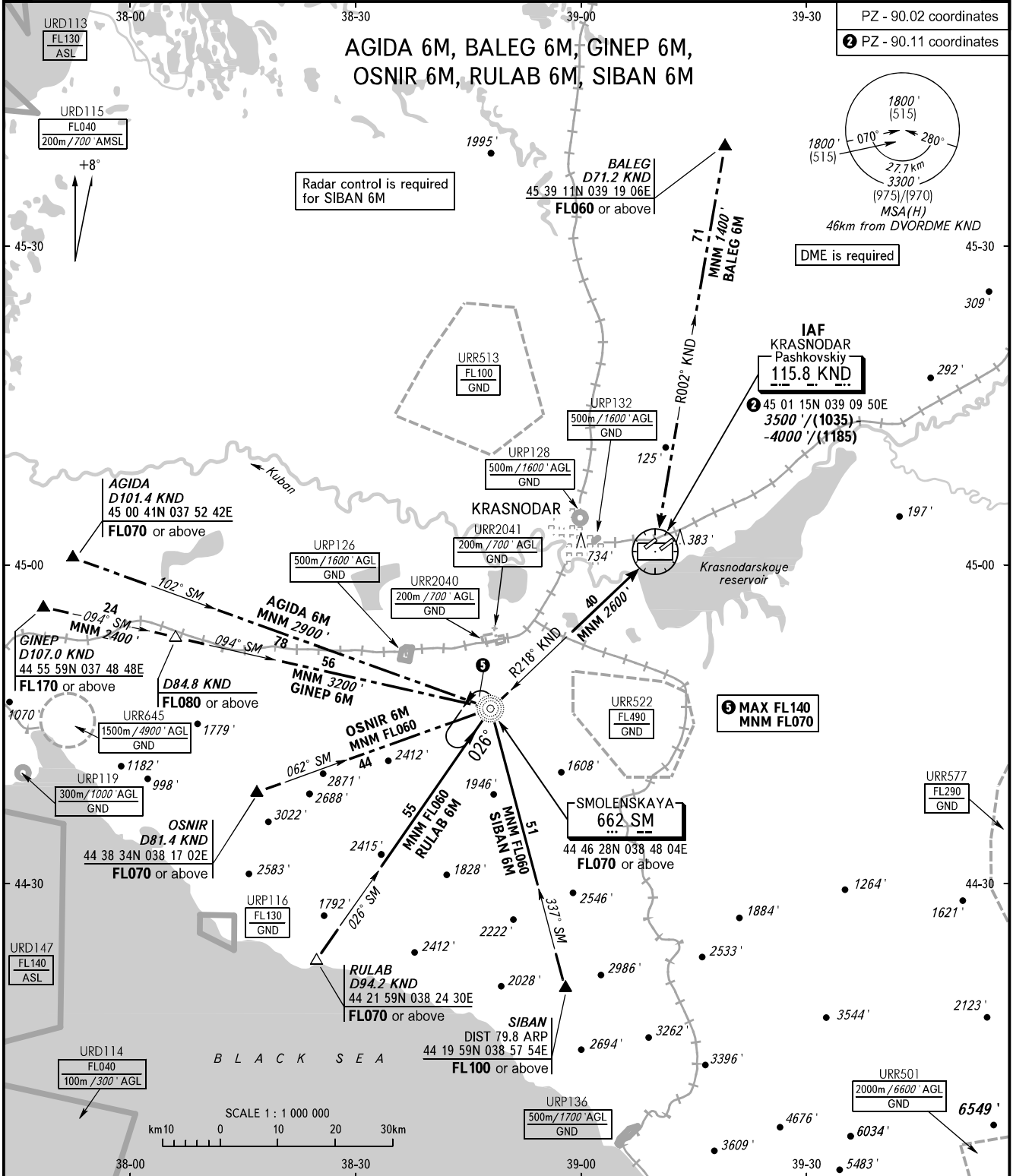


STANDARD ARRIVAL CHART
INSTRUMENT (STAR) - ICAO

TRANSITION
LEVEL: **1**

KRASNODAR, RUSSIA
PASHKOVSKIY
RWY 05R/23L



APPROACH	Sector WEST	127.700
	Sector EAST	129.600
RADAR		121.300
TOWER		118.200

Alt set: -QNH(QFE on req);
-hPa(mm on req).

- 1** TRANSITION LEVEL:
- FL060 when QNH is 977 hPa (733mm mercury column) or above;
 - FL070 when QNH is 941 hPa (706mm mercury column) or above, but less than 977 hPa (733mm mercury column).
- NOTE:**
1. ATC using facilities for surveillance of ACFT to avoid restricted area URR522 is required for holding over NDB SM.
 2. ATC using facilities for surveillance of ACFT to avoid prohibited area URP116 is required for STAR RULAB 6M.
 3. ATC using facilities for surveillance of ACFT to avoid restricted area URR522 is required for STAR AGIDA 6M, GINEP 6M, OSNIR 6M, RULAB 6M, SIBAN 6M.

BEARINGS AND TRACKS ARE MAGNETIC
ALTITUDES AND ELEVATIONS IN FEET
HEIGHTS IN METRES
DISTANCES IN KILOMETRES

CHANGE: Heading, URP, URR, URD