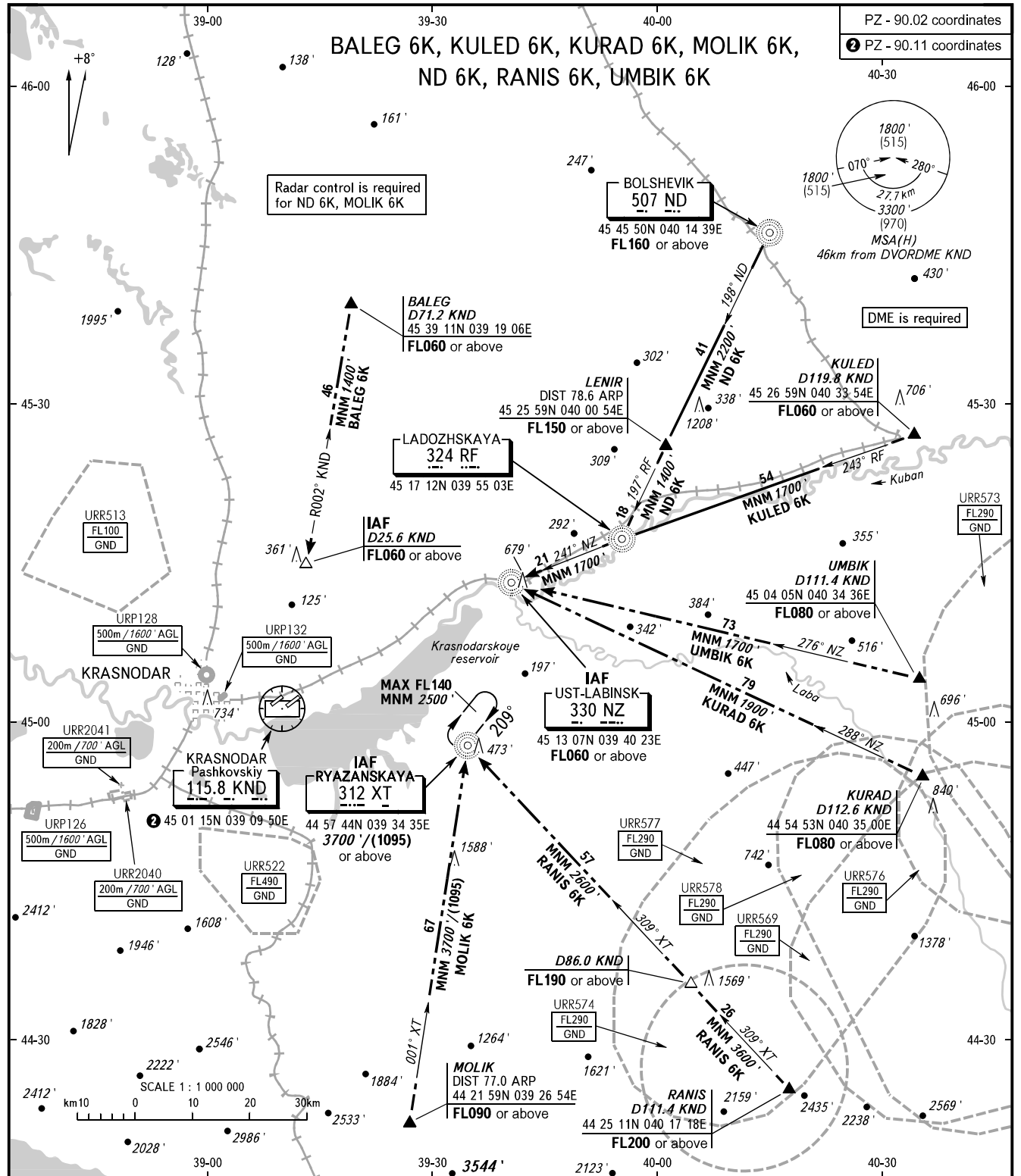


STANDARD ARRIVAL CHART
INSTRUMENT (STAR) - ICAO

TRANSITION
LEVEL: ①

KRASNODAR, RUSSIA
PASHKOVSKIY
RWY 23L



PZ - 90.02 coordinates
② PZ - 90.11 coordinates

Radar control is required
for ND 6K, MOLIK 6K

DME is required

APPROACH	Sector WEST	127.700
	Sector EAST	129.600
RADAR		121.300
TOWER		118.200

① TRANSITION LEVEL:
- FL060 when QNH is 977 hPa (733mm mercury column) or above;
- FL070 when QNH is 941 hPa (706mm mercury column) or above,
but less than 977 hPa (733mm mercury column).

NOTE:
1. When URR577, URR578, URR576, URR573, URR569 are active,
STAR KURAD 6K is not AVBL.
2. When URR574, URR577, URR578, URR569 are active,
STAR RANIS 6K is not AVBL.
3. When URR578, URR573, URR577, URR576, URR569 are active,
STAR UMBIK 6K is not AVBL.

BEARINGS AND TRACKS ARE MAGNETIC
ALTITUDES AND ELEVATIONS IN FEET
HEIGHTS IN METRES
DISTANCES IN KILOMETRES

Alt set: -QNH(QFE on req);
-hPa(mm on req).

CHANGE: Heading, URR