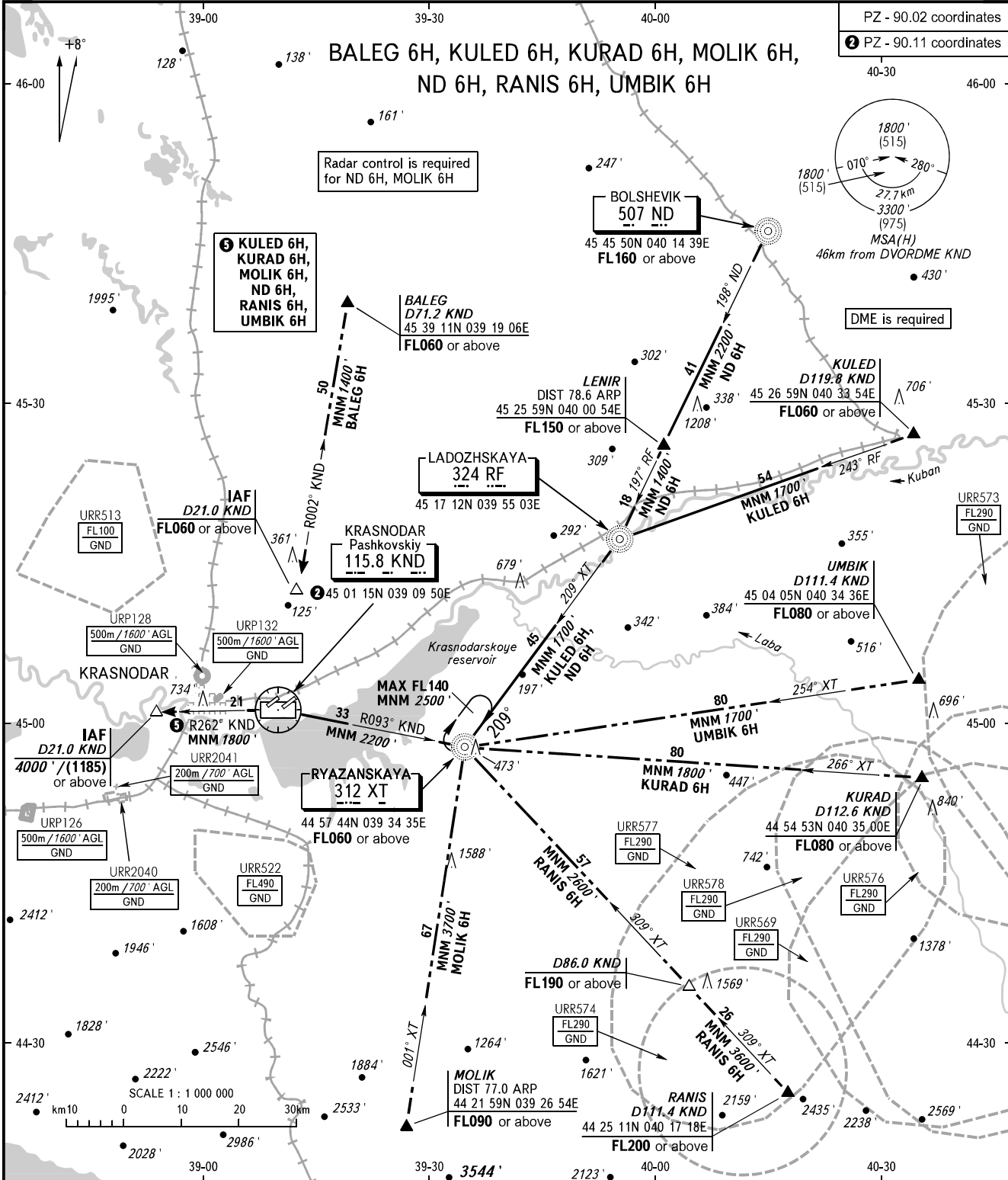


STANDARD ARRIVAL CHART
INSTRUMENT (STAR) - ICAO

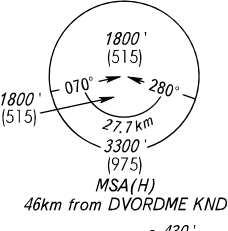
KRASNODAR, RUSSIA
PASHKOVSKIY
RWY 05R

TRANSITION
LEVEL: ①

PZ - 90.02 coordinates
② PZ - 90.11 coordinates



Radar control is required
for ND 6H, MOLIK 6H



③ KULED 6H,
KURAD 6H,
MOLIK 6H,
ND 6H,
RANIS 6H,
UMBIK 6H

APPROACH Sector WEST 127.700
Sector EAST 129.600
RADAR 121.300
TOWER 118.200

① TRANSITION LEVEL:
- FL060 when QNH is 977 hPa (733mm mercury column) or above;
- FL070 when QNH is 941 hPa (706mm mercury column) or above,
but less than 977 hPa (733mm mercury column).

NOTE:
1. When URR577, URR578, URR576, URR573, URR569 are active,
STAR KURAD 6H is not AVBL.
2. When URR574, URR577, URR578, URR569 are active,
STAR RANIS 6H is not AVBL.
3. When URR578, URR573, URR577, URR576, URR569 are active,
STAR UMBIK 6H is not AVBL.

BEARINGS AND TRACKS ARE MAGNETIC
ALTITUDES AND ELEVATIONS IN FEET
HEIGHTS IN METRES
DISTANCES IN KILOMETRES

Alt set: -QNH(QFE on req);
-hPa(mm on req).

CHANGE: Heading, URR