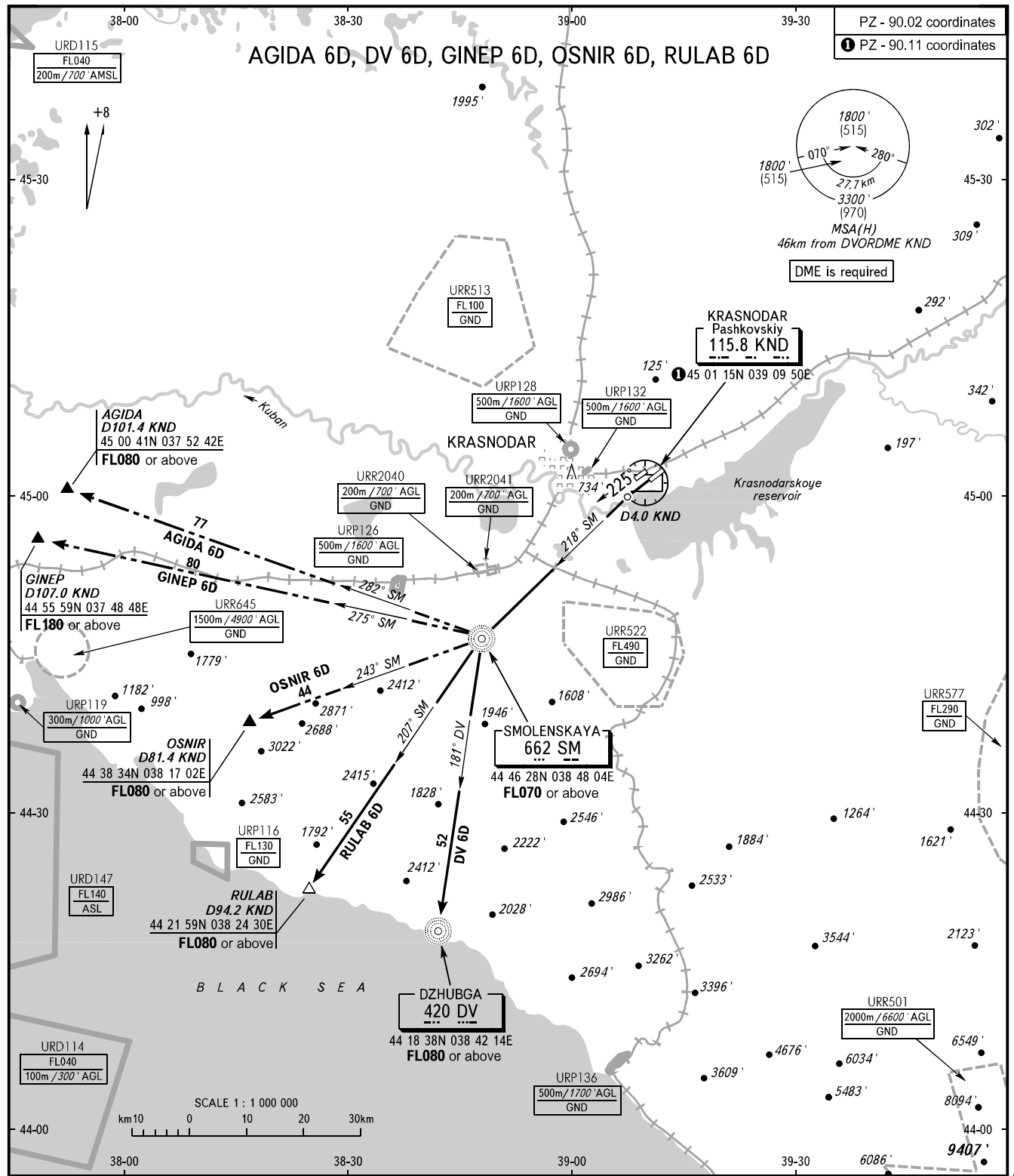


**STANDARD DEPARTURE CHART
INSTRUMENT (SID) - ICAO**

TRANSITION ALT: **4000'**
TRANSITION HGT: **(1185)**

**KRASNODAR, RUSSIA
PASHKOVSKIY
RWY 23L**



TOWER	118.200
RADAR	121.300
APPROACH Sector WEST	127.700
Sector EAST	129.600

BEARINGS AND TRACKS ARE MAGNETIC	Alt set: -QNH(QFE on req); -hPa(mm on req).
ALTITUDES AND ELEVATIONS IN FEET	
HEIGHTS IN METRES	
DISTANCES IN KILOMETRES	

WARNING
The minimum climb gradients (required due to the airspace structure only) are as follows:
- 5.2% up to FL070 for SIDs AGIDA 6D, DV 6D, OSNIR 6D, RULAB 6D;
- 5.2% up to FL070, then 4.2% up to FL180 for SID GINEP 6D.

CHANGE: Heading, URP, URR, URD