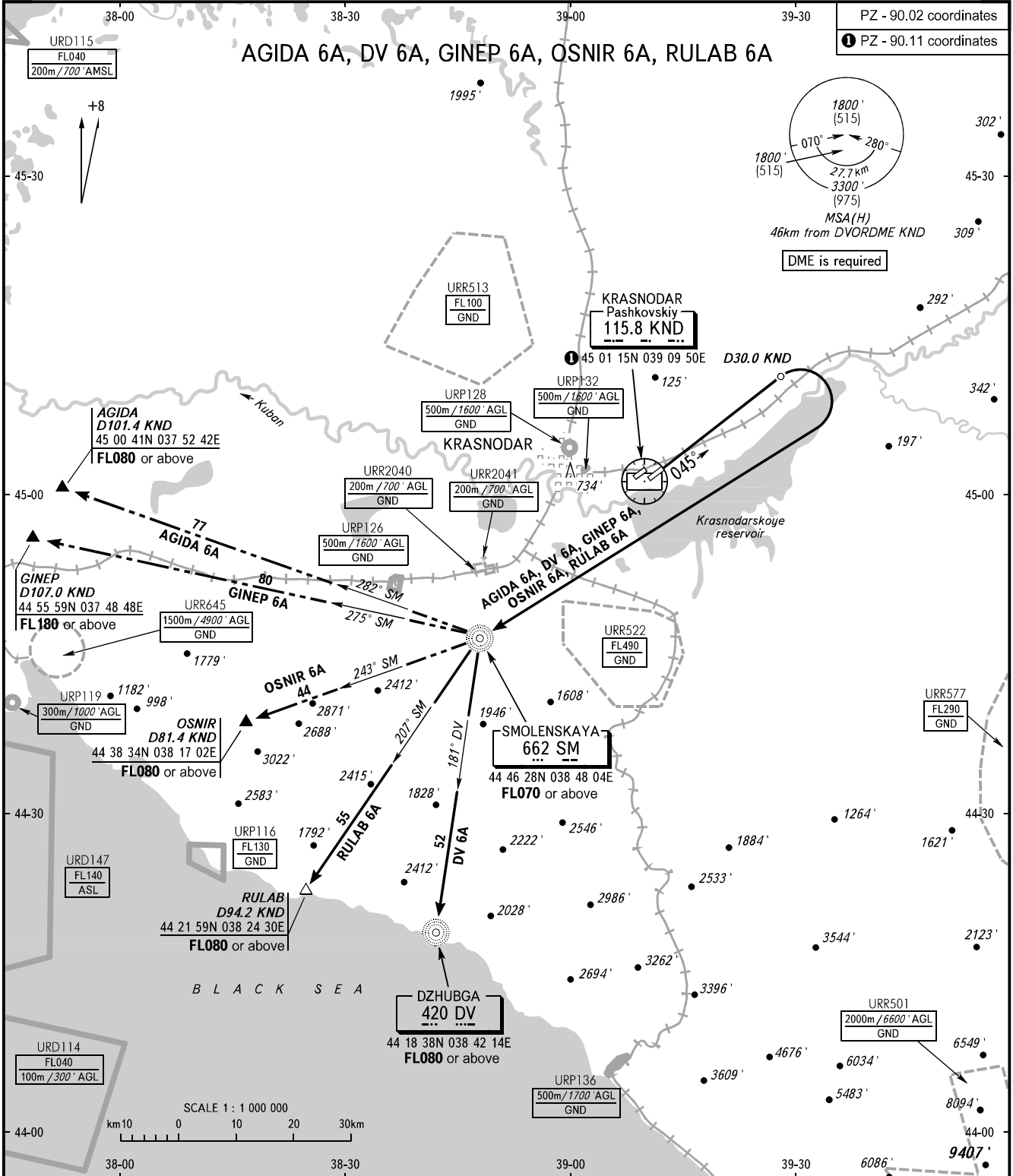


STANDARD DEPARTURE CHART
INSTRUMENT (SID) - ICAO

TRANSITION ALT: **4000'**
TRANSITION HGT: **(1185)**

KRASNODAR, RUSSIA
PASHKOVSKIY
RWY 05R



TOWER	118.200
RADAR	121.300
APPROACH Sector WEST	127.700
Sector EAST	129.600

NOTE
ATC using facilities for surveillance of ACFT to avoid restricted area URR522 is required for SIDs AGIDA 6A, GINEP 6A, OSNIR 6A, RULAB 6A, DV 6A.

BEARINGS AND TRACKS ARE MAGNETIC ALTITUDES AND ELEVATIONS IN FEET HEIGHTS IN METRES DISTANCES IN KILOMETRES	Alt set: -QNH(QFE on req); -hPa(mm on req).
--	--

CHANGE: Heading, URP, URR, URD