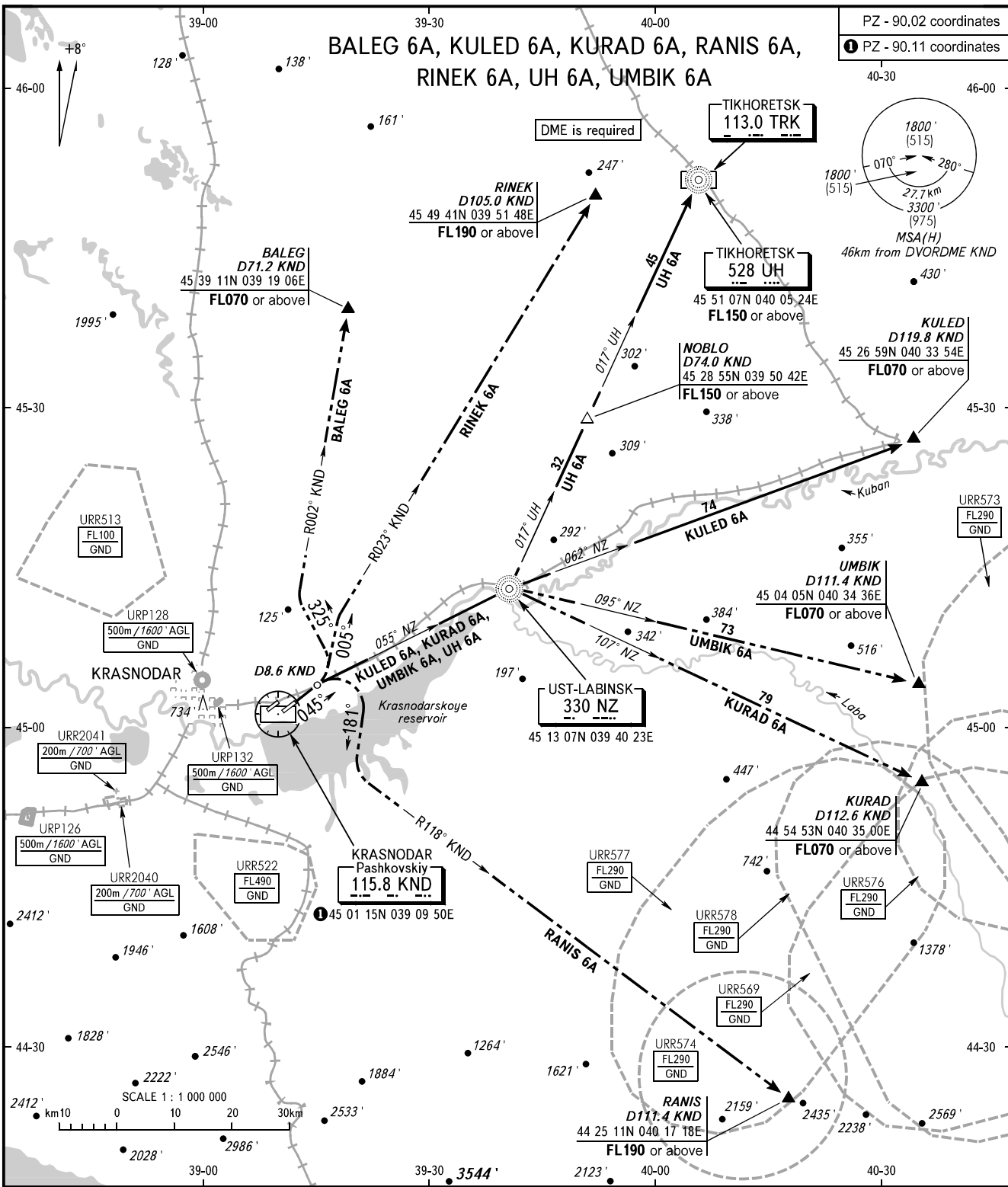


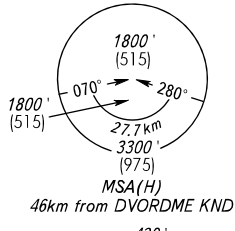
STANDARD DEPARTURE CHART  
INSTRUMENT (SID) - ICAO

TRANSITION ALT: **4000'**  
TRANSITION HGT: **(1185)**

**KRASNODAR, RUSSIA**  
PASHKOVSKIY  
RWY 05R



PZ - 90.02 coordinates  
① PZ - 90.11 coordinates



TOWER	<b>118.200</b>	<p><b>WARNING</b> The minimum climb gradients (required due to the airspace structure only) are as follows: - 5.7% up to FL190 for SID RINEK 6A; - 6.2% up to FL150 for SID UH 6A; - 5.4% up to FL190 for SID RANIS 6A.</p> <p><b>NOTE:</b> 1. When URR574, URR577, URR569 are active, SID RANIS 6A is not AVBL. 2. When URR577, URR576, URR573, URR578, URR569 are active, SID KURAD 6A is not AVBL. 3. When URR578, URR573 are active, SID UMBIK 6A is not AVBL.</p>
RADAR	<b>121.300</b>	
APPROACH Sector WEST	<b>127.700</b>	
APPROACH Sector EAST	<b>129.600</b>	
BEARINGS AND TRACKS ARE MAGNETIC	Alt set: -QNH(QFE on req);	
ALTITUDES AND ELEVATIONS IN FEET	-hPa(mm on req).	
HEIGHTS IN METRES		
DISTANCES IN KILOMETRES		

CHANGE: Heading, URR